

Anti-Cdc2 P34 Antibody

Catalog Number: A30951

About CDK1

p34 cdc2 is a serine-threonine protein kinase of 34,000 daltons that complexes with cyclin to form maturation promoting factor (MPF). The inactive form of the protein is phosphorylated at threonine (T) and tyrosine (Y) residues. In humans the phosphorylation appears to be performed by p60src. The active form of the protein is dephosphorylated and it functions by phosphorylating a number of proteins. The phosphorylation activity is coupled to the entry into the M-phase of the cell. p34 cdc2 protein must be associated with a normal cyclin protein for the M-phase to be completed normally. Association with deletion mutants of cyclin halts the M-phase before it is completed.

Overview

| | |
|----------------------|---|
| Product Name | Anti-Cdc2 P34 Antibody |
| Reactive Species | Human |
| Description | Boster Bio Anti-Cdc2 P34 Antibody (Catalog # A30951). Tested in ELISA, WB applications. This antibody reacts with Human. |
| Application | ELISA, IP, IHC, WB |
| Clonality | Polyclonal |
| Formulation | 0.01% (w/v) Sodium Azide |
| Storage Instructions | Store vial at -20°C prior to opening. Aliquot contents and freeze at -20°C or below for extended storage. Avoid cycles of freezing and thawing. Centrifuge product if not completely clear after standing at room temperature. This product is stable for several weeks at 4°C as an undiluted liquid. Dilute only prior to immediate use. Expiration date is one (1) year from date of opening. (Ship on dry ice.) |
| Host | Rabbit |
| Uniprot ID | P06493 |

Technical Details

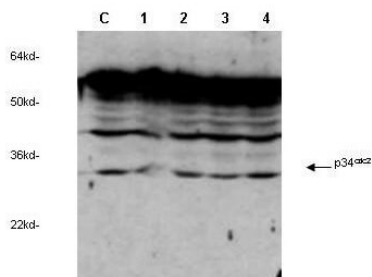
| | |
|----------------------------|--|
| Immunogen | CDC2 peptide corresponding to the C-terminus of the human protein conjugated to Keyhole Limpet Hemocyanin (KLH). |
| Predicted Reactive Species | Bovine, Canine, Equine, Guinea Pig, Pig, Rabbit, Zebrafish |
| Isotype | Antiserum |
| Form | Liquid (sterile filtered) |
| Concentration | 85 mg/mL by Refractometry |
| Purification | This product was prepared from monospecific antiserum by delipidation and defibrination. |

Antiserum will specifically react with a 34 kDa cdc2 protein from human, rat and mouse tissue. No reaction was observed against other related cyclin dependent kinases. Cross-reactivity with cdc2 from other species may also occur.

Suggested Dilutions

ELISA: 1:60,000
IHC: 1:200 - 1:1,000
IP: 1:100
WB: 1:250 - 1:5,000
Anti-p34 cdc2 antibody has been tested in ELISA and western blot and is suitable for immunoblotting, immunohistochemistry immunoprecipitation (as active kinase), and immunoblotting. HeLa cell lysate or human colon carcinoma is suggested as a positive control for immunoblotting. LEP fibroblast cell lysate is suggested as a negative control. This product is suitable for the detection by immunoblot of human, rat and mouse cdc2. For immunohistochemistry use paraffin embedded tissue.

Anti-Cdc2 P34 Antibody (A30951) Images



Boster's anti-cdc2 Cyclin Dependent Kinase was used to detect human p34cdc2 by western blot in untreated (Control) and drug treated lysates of MCF-7 cells. Lane 1-4 represents 3.1µM, 6.2µM, 12.5µM and 25.0µM genistein treatment of cells before lysates were prepared. Detection occurs using a 1:1,000 dilution. Although this antiserum detects non-specific bands at higher MW, a clear induction of signal is observed as the concentration of drug is increased. Personnel Communication, Xiao He Yang, University of Oklahoma Health Sciences Center.

Submit a product review to [Biocompare.com](https://www.biocompare.com)

Submit a review of this product to [Biocompare.com](https://www.biocompare.com) to receive a \$20 Amazon.com giftcard! Your reviews help your fellow scientists make the right decisions. Thank you for your contribution.



Anti-Cdc2 P34 Antibody

For Research Use Only. Not for use in diagnostic procedures.