

## Anti-AP2A ap2a1-1 Antibody

Catalog Number: A30987

### About AP2A

The AP2A1 and AP2A2 represent the AP2 alpha proteins that are found in the AP2 complex in clathrin-coated vesicles. AP2A is also known as Alpha-adaptin A, Adaptor protein complex AP-2 alpha-1 subunit, Clathrin assembly protein complex 2 alpha-A large chain, 100 kDa coated vesicle protein A and Plasma membrane adaptor HA2/AP2 adaptin alpha A subunit. The AP2 complex is a heterotetramer consisting of two large adaptins (alpha or beta), a medium adaptin (mu), and a small adaptin (sigma). The complex is part of the protein coat on the cytoplasmic face of coated vesicles, which link clathrin to receptors in vesicles.

### Overview

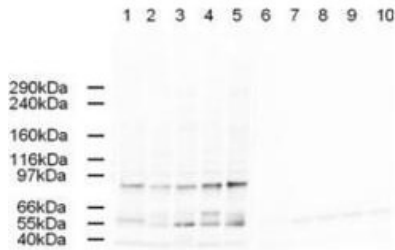
Product Name	Anti-AP2A ap2a1-1 Antibody
Reactive Species	Human
Description	Boster Bio Anti-AP2A ap2a1-1 Antibody (Catalog # A30987). Tested in ELISA, WB applications. This antibody reacts with Human.
Application	ELISA, IP, WB
Clonality	Polyclonal
Formulation	0.02 M Potassium Phosphate, 0.15 M Sodium Chloride, pH 7.2, 0.01% (w/v) Sodium Azide
Storage Instructions	Store vial at -20°C prior to opening. Aliquot contents and freeze at -20°C or below for extended storage. Avoid cycles of freezing and thawing. Centrifuge product if not completely clear after standing at room temperature. This product is stable for several weeks at 4°C as an undiluted liquid. Dilute only prior to immediate use. Expiration date is one (1) year from date of opening. (Ship on dry ice.)
Host	Goat
Uniprot ID	O95782

### Technical Details

Immunogen	This affinity purified antibody was prepared from whole goat serum produced by repeated immunizations with a synthetic peptide corresponding to the N-Terminal region near aa 1-25 of Human AP2A1 and AP2A2 proteins.
Predicted Reactive Species	Canine, Chicken, Chimpanzee
Isotype	IgG
Form	Liquid (sterile filtered)
Concentration	1.7 mg/mL by UV absorbance at 280 nm

Purification	This affinity purified antibody is directed against human AP2A. The product was affinity purified from antiserum by immunoaffinity purification. A BLAST analysis was used to suggest reactivity with AP2A1 and AP2A2 protein from human, chimpanzee, orangutan, mouse, rat, chicken and dog based on 100% homology for the immunogen sequence. Cross-reactivity with AP2A proteins from other sources is not known.
Suggested Dilutions	ELISA: 1:5,000 - 1:20,000 IP: 1:100 WB: 1:500 - 1:2,000 This affinity purified antibody has been tested for use in ELISA and by western blot. Specific conditions for reactivity should be optimized by the end user. Expect a band approximately 104-107 kDa in size corresponding to AP2A1 or AP2A2 proteins by western blotting in the appropriate cell lysate or extract. Multiple isoforms of each subunit exist for these proteins. The immunogen sequence is found in both AP2A1 and AP2A2. This antibody recognizes a band of approximately 100 kDa in multiple human cell lines and specific reactivity can be blocked with the immunizing peptide.

## Anti-AP2A ap2a1-1 Antibody (A30987) Images



Western blot using Boster's Affinity Purified anti-AP2A antibody shows detection of a band just below 100 kDa corresponding to Human AP2A1. Lane 1: HeLa nuclear extract, Lane 2: HeLa, Lane 3: 293 (W09-000-365), Lane 4: A431, and Lane 5: Jurkat whole cell lysate. In lanes 6-10 the antibody was preincubated with 1  $\mu\text{g}/\text{ml}$  of the immunizing peptide which effectively blocks the specific reactivity of this antibody with AP2A. Approximately 20  $\mu\text{g}$  of each lysate was run on a SDS-PAGE and transferred onto nitrocellulose followed by reaction with a 1:500 dilution of anti-AP2A antibody. Detection occurred using a 1:5,000 dilution of HRP-labeled Rabbit anti-Goat IgG for 1 hour at room temperature. A chemiluminescence system was used for signal detection (Roche) using a 60-sec exposure time.

### Submit a product review to Biocompare.com

Submit a review of this product to Biocompare.com to receive a \$20 Amazon.com giftcard! Your reviews help your fellow scientists make the right decisions. Thank you for your contribution.



Anti-AP2A ap2a1-1 Antibody

For Research Use Only. Not for use in diagnostic procedures.