

## Anti-Elongin-B ELOB Antibody

Catalog Number: A31718-1

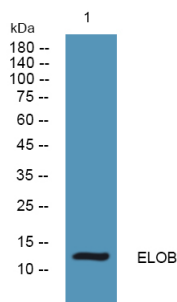
### Overview

|                      |  |
|----------------------|--|
| Product Name         | Anti-Elongin-B ELOB Antibody   |
| Reactive Species     | Human, Mouse, Rat  |
| Description          | Boster Bio Anti-Elongin-B ELOB Antibody catalog # A31718-1. Tested in WB, ELISA applications. This antibody reacts with Human, Mouse, Rat. |
| Application          | ELISA, WB  |
| Clonality            | Polyclonal   |
| Formulation          | Liquid form in PBS containing 50% glycerol, and 0.02% sodium azide.  |
| Storage Instructions | Store at -20°C for one year. For short term storage and frequent use, store at 4°C for up to one month. Avoid repeated freeze-thaw cycles. |
| Host                 | Rabbit   |
| Uniprot ID           | Q15370   |

### Technical Details

|                     |  |
|---------------------|--|
| Immunogen           | Synthesized peptide derived from human protein at AA range: 30-110   |
| Isotype             | IgG  |
| Form                | Liquid   |
| Concentration       | 1 mg/ml  |
| Purification        | ELOB antibody was affinity-purified from rabbit antiserum by affinity-chromatography using epitope-specific immunogen. |
| Suggested Dilutions | WB 1:500-2000<br>ELISA 1:5000-20000  |

## Anti-Elongin-B ELOB Antibody (A31718-1) Images



Western blot analysis of lysates from K562 cells, primary antibody was diluted at 1:1000, 4°over night

### Submit a product review to Biocompare.com

Submit a review of this product to Biocompare.com to receive a \$20 Amazon.com giftcard! Your reviews help your fellow scientists make the right decisions. Thank you for your contribution.



Anti-Elongin-B ELOB Antibody

For Research Use Only. Not for use in diagnostic procedures.