

Anti-DGCR14/ESS2 Antibody Picoband®

Catalog Number: A31721

About ESS2

This gene is located within the minimal DGS critical region (MDGCR) thought to contain the gene(s) responsible for a group of developmental disorders. These disorders include DiGeorge syndrome, velocardiofacial syndrome, conotruncal anomaly face syndrome, and some familial or sporadic conotruncal cardiac defects which have been associated with microdeletion of 22q11.2. The encoded protein may be a component of C complex spliceosomes, and the orthologous protein in the mouse localizes to the nucleus. Alternatively spliced transcript variants have been found for this gene.

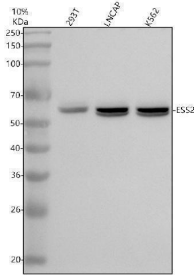
Overview

Product Name	Anti-DGCR14/ESS2 Antibody Picoband®
Reactive Species	Human
Description	Boster Bio Anti-DGCR14/ESS2 Antibody Picoband® catalog # A31721. Tested in WB, IHC, ICC, IF, IP, ELISA applications. This antibody reacts with Human. The brand Picoband indicates this is a premium antibody that guarantees superior quality, high affinity, and strong signals with minimal background in Western blot applications. Only our best-performing antibodies are designated as Picoband, ensuring unmatched performance.
Application	ELISA, IP, IF, IHC, ICC, WB
Clonality	Polyclonal
Formulation	Each vial contains 4 mg Trehalose, 0.9 mg NaCl, 0.2 mg Na ₂ HPO ₄ .
Storage Instructions	At -20°C for one year from date of receipt. After reconstitution, at 4°C for one month. It can also be aliquotted and stored frozen at -20°C for six months. Avoid repeated freezing and thawing.
Host	Rabbit
Uniprot ID	Q96DF8

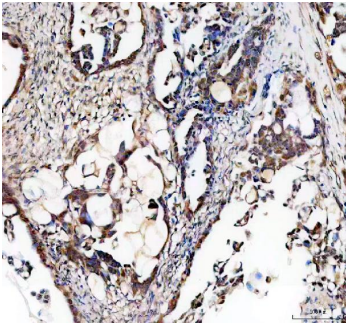
Technical Details

Immunogen	E.coli-derived human DGCR14/ESS2 recombinant protein (Position: T32-F476).
Form	Lyophilized
Concentration	Adding 0.2 ml of distilled water will yield a concentration of 500 ug/ml.
Purification	Immunogen affinity purified.
Suggested Dilutions	Western blot, 0.25-0.5 ug/ml, Mouse, Rat Immunohistochemistry(Paraffin-embedded Section), 2-5 ug/ml, Human

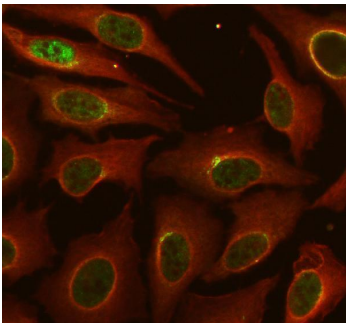
Anti-DGCR14/ESS2 Antibody Picoband® (A31721) Images



Western blot analysis of DGCR14/ESS2 using anti-DGCR14/ESS2 antibody (A31721). Electrophoresis was performed on a 10% SDS-PAGE gel at 80V (Stacking gel) / 120V (Resolving gel) for 2 hours. The sample well of each lane was loaded with 30 ug of sample under reducing conditions. Lane 1: human 293T whole cell lysates, Lane 2: human LNCaP whole cell lysates, Lane 3: human K562 whole cell lysates. After electrophoresis, proteins were transferred to a nitrocellulose membrane at 150 mA for 50-90 minutes. Blocked the membrane with 5% non-fat milk/TBS for 1.5 hour at RT. The membrane was incubated with rabbit anti-DGCR14/ESS2 antigen affinity purified polyclonal antibody (A31721) at 0.5 ug/mL overnight at 4°C, then washed with TBS-0.1% Tween 3 times with 5 minutes each and probed with a goat anti-rabbit IgG-HRP secondary antibody at a dilution of 1:5000 for 1.5 hour at RT. The signal is developed using an ECL Plus Western Blotting Substrate (Catalog # AR1196-200) with Tanon 5200 system. A specific band was detected for DGCR14/ESS2 at approximately 60 kDa. The expected band size for DGCR14/ESS2 is at 53 kDa.

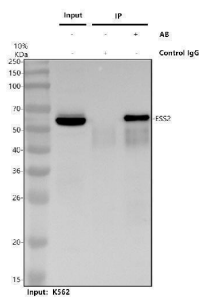


IHC analysis of DGCR14/ESS2 using anti-DGCR14/ESS2 antibody (A31721). DGCR14/ESS2 was detected in a paraffin-embedded section of human ovarian cancer tissue. Heat mediated antigen retrieval was performed in EDTA buffer (pH 8.0, epitope retrieval solution). The tissue section was blocked with 10% goat serum. The tissue section was then incubated with 2 ug/ml rabbit anti-DGCR14/ESS2 Antibody (A31721) overnight at 4°C. Peroxidase Conjugated Goat Anti-rabbit IgG was used as secondary antibody and incubated for 30 minutes at 37°C. The tissue section was developed using HRP Conjugated Rabbit IgG Super Vision Assay Kit (Catalog # SV0002) with DAB as the chromogen.



IF analysis of DGCR14/ESS2 using anti-DGCR14/ESS2 antibody (A31721) and anti-Alpha Tubulin antibody (M03989-3). DGCR14/ESS2 was detected in an immunocytochemical section of U2OS cells. Enzyme antigen retrieval was performed using IHC enzyme antigen retrieval reagent (AR0022) for 15 mins. The cells were blocked with 10% goat serum. And then incubated with 5 ug/mL rabbit anti-DGCR14/ESS2 Antibody (A31721) and mouse anti-Alpha Tubulin antibody (M03989-3) overnight at 4°C. Fluoro488 Conjugated Goat Anti-Rabbit IgG (BA1127) and Cy3 Conjugated Goat Anti-Mouse IgG (BA1031) were used as secondary antibody at 1:500 dilution and incubated for 30 minutes at 37°C. Visualize using a fluorescence microscope and filter sets appropriate for the label used.

Immunoprecipitating DGCR14/ESS2 in K562 whole cell lysate. Western blot analysis of DGCR14/ESS2 using anti-DGCR14/ESS2 antibody (A31721). Lane 1: K562 whole cell



lysates (30ug), Lane 2: Rabbit control IgG instead of anti-DGCR14/ESS2 antibody in K562 whole cell lysate, Lane 3: anti-DGCR14/ESS2 antibody (2ug) + K562 whole cell lysate (500ug). After electrophoresis, proteins were transferred to a membrane. Then the membrane was incubated with rabbit anti-DGCR14/ESS2 antigen affinity purified polyclonal antibody (A31721) at a dilution of 0.5 ug/mL and probed with a mouse anti-rabbit IgG-HRP secondary antibody (Catalog # BM2007). The signal is developed using ECL Plus Western Blotting Substrate (Catalog # AR1197). A specific band was detected for DGCR14/ESS2 at approximately 60 kDa. The expected band size for DGCR14/ESS2 is at 53 kDa.

Submit a product review to Biocompare.com

Submit a review of this product to Biocompare.com to receive a \$20 Amazon.com giftcard! Your reviews help your fellow scientists make the right decisions. Thank you for your contribution.



Anti-DGCR14/ESS2 Antibody

For Research Use Only. Not for use in diagnostic procedures.