

Anti-PTRF CAVIN1 Antibody

Catalog Number: A31732

Introduction

CD3epsilon is a 20kD chain, which together with CD3lambda, CD3delta, and CD3zeta, and a T cell receptor (alpha/beta or gamma/delta) form the CD3/T-cell receptor complex. It is a specific marker for T lymphocytes, NK T cells, and some thymocytes. Crosslinking of TCR initiates an intracellular signaling cascade resulting in cellular activation and proliferation. The OKT3 antibody has been reported to have potent immunosuppressive properties in vivo and has been proved effective in the treatment of renal, heart, and liver allograft rejection.

This antibody is routinely tested by flow cytometric analysis. Flow cytometry and other applications were tested during antibody development or are reported in the literature.

Application Information

Each lot of this antibody has been quality control tested by flow cytometric analysis of human PBMCs. For flow cytometric staining, the recommended use of this antibody is $\leq 0.5\mu\text{g}$ per 1×10^6 cells in $100\mu\text{l}$ of staining volume followed by a secondary fluorescent conjugated anti-mouse antibody. However, it is strongly suggested that the antibody reactivity be empirically titrated for optimal performance in the application of interest.

About PTRF

The polymerase I and transcript release factor (PTRF) enables the dissociation of paused ternary polymerase I transcription complexes from the 3' end of pre-rRNA transcripts, regulating rRNA transcription by promoting the dissociation of transcription complexes and the re-initiation of polymerase I on nascent rRNA transcripts. PTRF also localizes to caveolae at the plasma membrane and is thought to play a critical role in the formation of caveolae and the stabilization of caveolins, translocating from caveolae to the cytoplasm after insulin stimulation. PTRF is also thought to modify lipid metabolism and insulin-regulated gene expression. Mutations in this gene result in a disorder characterized by generalized lipodystrophy and muscular dystrophy.

Overview

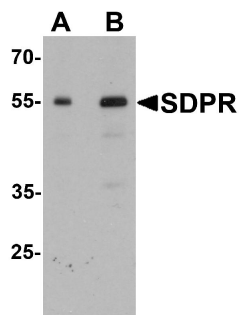
Product Name	Anti-PTRF CAVIN1 Antibody
Reactive Species	Human
Description	Boster Bio Anti-PTRF CAVIN1 Antibody (Catalog # A31732). Tested in ELISA, WB, IHC-P, IF applications. This antibody reacts with Human.
Conjugate	Biotin
Application	ELISA, IF, IHC-P, WB
Clonality	Polyclonal SK7
Formulation	PTRF Antibody is supplied in PBS containing 0.02% sodium azide.
Storage Instructions	PTRF antibody can be stored at 4°C for three months and -20°C, stable for up to one year.

Host	Rabbit
Uniprot ID	Q6NZI2

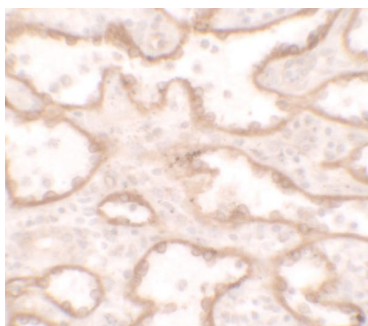
Technical Details

Immunogen	Rabbit polyclonal PTRF antibody was raised against a 19 amino acid peptide near the carboxy terminus of human PTRF. The immunogen is located within amino acids 270 - 320 of PTRF.
Predicted Reactive Species	Mouse, Rat
Cross Reactivity	At least three isoforms of PTRF are known to exist; this antibody detects all three isoforms. It is predicted to not cross-react with other members of the cavin family.
Isotype	IgG
Form	Liquid
Concentration	1 mg/mL
Purification	PTRF Antibody is affinity chromatography purified via peptide column.
Suggested Dilutions	<p>Dilute the sample so that the expected range of concentrations fall within the detection range of this kit.</p> <p>If the expected range of concentration is unknown, a pilot test should be conducted to decide the optimal dilution ratio for your samples.</p> <p>Some PubMed article(s) citing the expression level of this target are as follows:</p> <p>Boster Bio's internal QC testing used:</p> <p>PTRF antibody can be used for detection of PTRF by Western blot at 0.5 - 1 ug/mL.</p> <p>Antibody validated: Western Blot in human samples; Immunohistochemistry in human samples and Immunofluorescence in human samples. All other applications and species not yet tested. Optimal dilutions for each application should be determined by the researcher.</p>

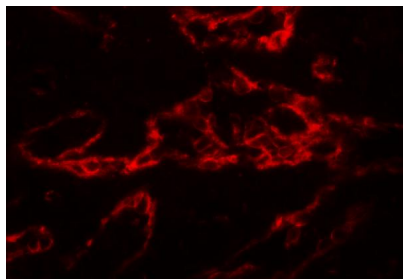
Anti-PTRF CAVIN1 Antibody (A31732) Images



Western blot analysis of PTRF in human spleen tissue lysate with PTRF antibody at (A) 0.5 and (B) 1 ug/mL



Immunohistochemistry of PTRF in human spleen tissue with PTRF antibody at 5 ug/ml.



Immunofluorescence of PTRF in human spleen tissue with PTRF antibody at 20 ug/ml.

Submit a product review to Biocompare.com

Submit a review of this product to Biocompare.com to receive a \$20 Amazon.com giftcard! Your reviews help your fellow scientists make the right decisions. Thank you for your contribution.



Anti-PTRF CAVIN1 Antibody