

## Anti-DELE DELE1 Antibody

Catalog Number: A31772

### About KIAA0141

DELE is a recently identified DAP3-binding protein that is thought to be important in the induction of death receptor-mediated apoptosis. Transfected cells that stably express DELE were found to be susceptible to apoptosis induction by TNF-alpha and TRAIL, whereas reducing DELE expression by siRNA rescued these cells from apoptosis induction. Furthermore, the reduction of DELE expression also inhibited the activation of caspase-3, caspase-8 and caspase-9 following stimulation by TNF-alpha, anti-Fas, or TRAIL, indicating the importance of DELE in apoptosis mediated by death receptors.

### Overview

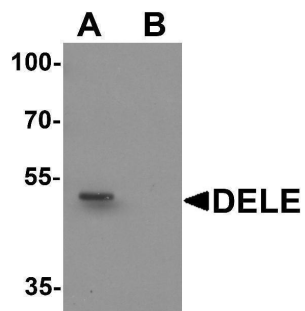
Product Name	Anti-DELE DELE1 Antibody
Reactive Species	Human, Rat
Description	Boster Bio Anti-DELE DELE1 Antibody (Catalog # A31772). Tested in ELISA, WB, IF applications. This antibody reacts with Human, Rat.
Application	ELISA, IF, WB
Clonality	Polyclonal
Formulation	DELE Antibody is supplied in PBS containing 0.02% sodium azide.
Storage Instructions	Antibody can be stored at 4°C up to one year. Antibodies should not be exposed to prolonged high temperatures.
Host	Rabbit
Uniprot ID	Q14154

### Technical Details

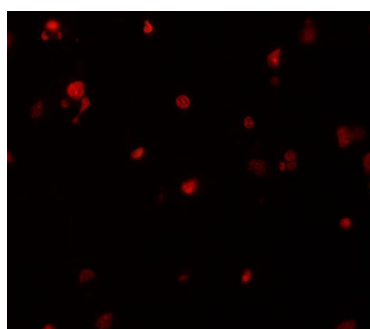
Immunogen	DELE antibody was raised against an 18 amino acid synthetic peptide near the amino terminus of human DELE. The immunogen is located within the first 50 amino acids of DELE.
Predicted Reactive Species	Mouse
Isotype	IgG
Form	Liquid
Concentration	1 mg/mL
Purification	DELE Antibody is affinity chromatography purified via peptide column.
Suggested Dilutions	DELE antibody can be used for detection of DELE by Western blot at 1 ug/mL. For immunofluorescence start at 20 ug/mL.

Antibody validated: Western Blot in rat samples and Immunofluorescence in human samples. All other applications and species not yet tested. Optimal dilutions for each application should be determined by the researcher.

## Anti-DELE DELE1 Antibody (A31772) Images



Western blot analysis of DELE in rat brain tissue lysate with DELE antibody at 1 ug/ml in (A) the absence and (B) the presence of blocking peptide.



Immunofluorescence of DELE in human brain tissue with DELE antibody at 20 ug/mL.

### Submit a product review to [Biocompare.com](https://www.biocompare.com)

Submit a review of this product to [Biocompare.com](https://www.biocompare.com) to receive a \$20 Amazon.com giftcard! Your reviews help your fellow scientists make the right decisions. Thank you for your contribution.



Anti-DELE DELE1 Antibody

For Research Use Only. Not for use in diagnostic procedures.