

Anti-GSG2 Antibody (Center)

Catalog Number: A31862-1

About HASPIN

Post-translational modifications of conserved N-terminal tail residues in histones regulate many aspects of chromosome activity. Mitotic phosphorylation of H3 Thr 3 occurs in prophase and dephosphorylation during anaphase. Haspin, a dual serine/threonine kinase, plays an important role in regulation of chromosome and spindle function during mitosis and meiosis via its function in phosphorylation of the threonine residue in the third position of histone 3 (Thr3).

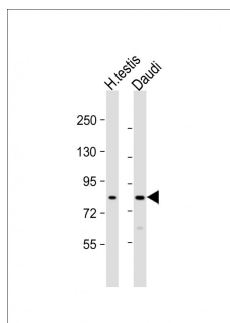
Overview

Product Name	Anti-GSG2 Antibody (Center)
Reactive Species	Human
Description	Boster Bio Anti-GSG2 Antibody (Center) (Catalog # A31862-1). Tested in IHC-P, WB application(s). This antibody reacts with Human.
Application	IHC-P, WB
Clonality	Polyclonal
Formulation	Purified polyclonal antibody supplied in PBS with 0.09% (W/V) sodium azide.
Storage Instructions	Maintain refrigerated at 2-8°C for up to 2 weeks. For long-term storage, store at -20°C in small aliquots to prevent freeze-thaw cycles.
Host	Rabbit
Uniprot ID	Q8TF76

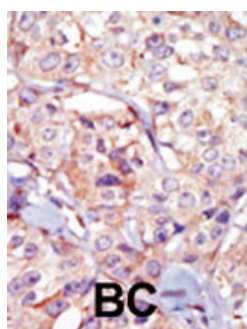
Technical Details

Immunogen	This Haspin GSG2 antibody is generated from rabbits immunized with a KLH conjugated synthetic peptide between 323~352 amino acids from the central region of human haspin.
Predicted Reactive Species	Bovine, Chicken, Mouse, Pig, Rat, Zebrafish
Isotype	Rabbit IgG
Purification	This antibody is purified through a protein A column, followed by peptide affinity purification.
Suggested Dilutions	WB: 1:1000 IHC-P: 1:50-1:100

Anti-GSG2 Antibody (Center) (A31862-1) Images



All lanes : Anti-GSG2 Antibody (Center) at 1:1000 dilution
Lane 1: human testis lysate
Lane 2: Daudi whole cell lysate
Lysates/proteins at 20 μ g per lane. Secondary Goat Anti-Rabbit IgG, (H+L), Peroxidase conjugated at 1/10000 dilution. Predicted band size : 88 kDa
Blocking/Dilution buffer: 5% NFDM/TBST.



Formalin-fixed and paraffin-embedded human cancer tissue reacted with the primary antibody, which was peroxidase-conjugated to the secondary antibody, followed by AEC staining. This data demonstrates the use of this antibody for immunohistochemistry; clinical relevance has not been evaluated. BC = breast carcinoma; HC = hepatocarcinoma.

Submit a product review to [Biocompare.com](https://www.biocompare.com)

Submit a review of this product to [Biocompare.com](https://www.biocompare.com) to receive a \$20 Amazon.com giftcard! Your reviews help your fellow scientists make the right decisions. Thank you for your contribution.



Anti-GSG2 Antibody (Center)

For Research Use Only. Not for use in diagnostic procedures.