

## Anti-FAM159A Antibody (Center)

Catalog Number: A31951

### About SHISAL2A

The exact function of this protein remains unknown.

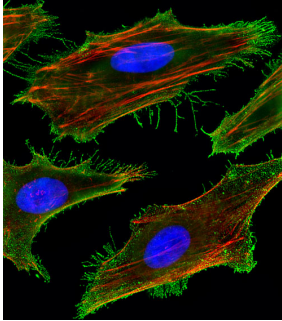
### Overview

Product Name	Anti-FAM159A Antibody (Center)
Reactive Species	Human, Mouse
Description	Boster Bio Anti-FAM159A Antibody (Center) (Catalog # A31951). Tested in IF, WB application(s). This antibody reacts with Human, Mouse.
Application	IF, WB
Clonality	Polyclonal
Formulation	Purified polyclonal antibody supplied in PBS with 0.09% (W/V) sodium azide.
Storage Instructions	Maintain refrigerated at 2-8°C for up to 2 weeks. For long-term storage, store at -20°C in small aliquots to prevent freeze-thaw cycles.
Host	Rabbit
Uniprot ID	Q6UWV7

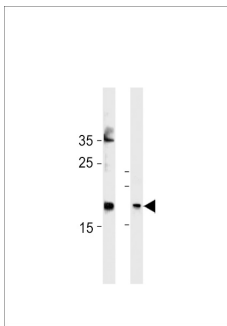
### Technical Details

Immunogen	This FAM159A antibody is generated from rabbits immunized with a KLH conjugated synthetic peptide between 89-115 amino acids from the Central region of human FAM159A.
Predicted Reactive Species	Bovine, Chicken, Mouse, Pig, Rat, Zebrafish
Isotype	Rabbit IgG
Purification	This antibody is purified through a protein A column, followed by peptide affinity purification.
Suggested Dilutions	IF: 1:25 WB: 1:1000

## Anti-FAM159A Antibody (Center) (A31951) Images



Fluorescent image of HeLa cells stained with FAM159A Antibody (Center). A31951 was diluted at 1:25 dilution. An Alexa Fluor 488-conjugated goat anti-rabbit IgG at 1:400 dilution was used as the secondary antibody (green). DAPI was used to stain the cell nuclear (blue). Cytoplasmic actin was counterstained with Alexa Fluor® 555 conjugated with Phalloidin (red).



FAM159A Antibody (Center) western blot analysis in HeLa cell line and mouse bladder tissue lysates (35ug/lane). This demonstrates the FAM159A antibody detected the FAM159A protein (arrow).

## Submit a product review to Biocompare.com

Submit a review of this product to Biocompare.com to receive a \$20 Amazon.com giftcard! Your reviews help your fellow scientists make the right decisions. Thank you for your contribution.



Anti-FAM159A Antibody (Center)

For Research Use Only. Not for use in diagnostic procedures.