

Anti-SELK SELENOK Antibody

Catalog Number: A31964

About SELK

SELK is a selenoprotein, containing a selenocysteine residue at its active site. SELK is localized to the endoplasmic reticulum and is highly expressed in the heart, where it may function as an antioxidant. SELK can bind to proteins such as the ER-associated degradation (ERAD) components p97 ATPase, Derlin-1 and -2, and SelS as well as proteins in the oligosaccharyltransferase complex, suggesting that SELK may be involved in the Derlin-dependent ERAD of glycosylated misfolded proteins. SELK is also thought to be important in Ca²⁺ flux in immune cells, and is cleaved by m-calpain in resting macrophages. When these macrophages are activated through different Toll-like receptors, this cleavage is inhibited

Overview

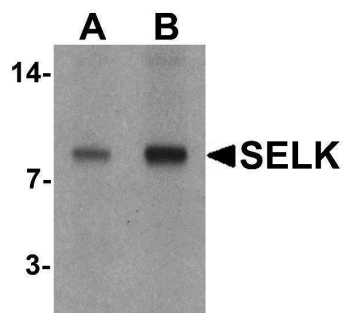
Product Name	Anti-SELK SELENOK Antibody
Reactive Species	Human, Mouse, Rat
Description	Boster Bio Anti-SELK SELENOK Antibody (Catalog # A31964). Tested in ELISA, WB, IF applications. This antibody reacts with Human, Mouse, Rat.
Application	ELISA, IF, WB
Clonality	Polyclonal
Formulation	SELK Antibody is supplied in PBS containing 0.02% sodium azide.
Storage Instructions	SELK antibody can be stored at 4°C for three months and -20°C, stable for up to one year. Avoid repeated freeze-thaw cycles. Antibodies should not be exposed to prolonged high temperatures.
Host	Rabbit
Uniprot ID	Q9Y6D0

Technical Details

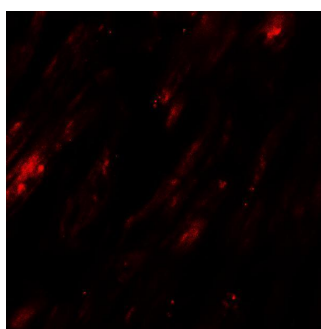
Immunogen	SELK antibody was raised against an 18 amino acid synthetic peptide near the carboxy terminus of human SELK. The immunogen is located within the last 50 amino acids of SELK.
Predicted Reactive Species	Bovine, Pig
Isotype	IgG
Form	Liquid
Concentration	1 mg/mL
Purification	SELK Antibody is affinity chromatography purified via peptide column.
Suggested Dilutions	SELK antibody can be used for detection of SELK by Western blot at 1 - 2 ug/mL. For immunofluorescence start at 20 ug/mL.

Antibody validated: Western Blot in mouse samples and Immunofluorescence in human samples. All other applications and species not yet tested. Optimal dilutions for each application should be determined by the researcher.

Anti-SELK SELENOK Antibody (A31964) Images



Western blot analysis of SELK in A20 cell lysate with SELK antibody at (A) 1 and (B) 2 ug/mL.



Immunofluorescence of SELK in human heart tissue with SELK antibody at 20 ug/mL.

Submit a product review to [Biocompare.com](https://www.biocompare.com)

Submit a review of this product to [Biocompare.com](https://www.biocompare.com) to receive a \$20 Amazon.com giftcard! Your reviews help your fellow scientists make the right decisions. Thank you for your contribution.



Anti-SELK SELENOK Antibody

For Research Use Only. Not for use in diagnostic procedures.