

Anti-Phospho-Pragmin (Y413) PRAG1 Antibody

Catalog Number: A32113Y413

About PRAG1

Catalytic subunit of a TRAMP-like complex which has a poly (A) RNA polymerase activity and is involved in a post-transcriptional quality control mechanism. Polyadenylation with short oligo (A) tails is required for the degradative activity of the exosome on several of its nuclear RNA substrates. Has no terminal uridylyltransferase activity, and does not play a role in replication-dependent histone mRNA degradation via uridylation.

Overview

Product Name	Anti-Phospho-Pragmin (Y413) PRAG1 Antibody
Reactive Species	Human, Mouse, Rat
Description	Boster Bio Anti-Phospho-Pragmin (Y413) PRAG1 Antibody catalog # A32113Y413. Tested in ELISA, IHC, WB applications. This antibody reacts with Human, Mouse, Rat.
Application	ELISA, IHC, WB
Clonality	Polyclonal
Formulation	Liquid in PBS containing 50% glycerol, 0.5% BSA and 0.02% sodium azide.
Storage Instructions	Store at -20°C for one year. For short term storage and frequent use, store at 4°C for up to one month. Avoid repeated freeze-thaw cycles.
Host	Rabbit
Uniprot ID	Q86YV5

Technical Details

Immunogen	Synthesized peptide derived from human Pragmin around the phosphorylation site of Y413.
Predicted Reactive Species	Chimpanzee, Drosophila, Macaque
Isotype	IgG
Form	Liquid
Concentration	1 mg/ml
Purification	The antibody was affinity-purified from rabbit antiserum by affinity-chromatography using epitope-specific immunogen.
Suggested Dilutions	Dilute the sample so that the expected range of concentrations fall within the detection range of this kit. If the expected range of concentration is unknown, a pilot test should be conducted to decide the

optimal dilution ratio for your samples.
Some PubMed article(s) citing the expression level of this target are as follows:
Boster Bio's internal QC testing used:
WB 1:500-1:2000
IHC 1:100-1:300
ELISA 1:10000

Anti-Phospho-Pragmin (Y413) PRAG1 Antibody (A32113Y413) Images

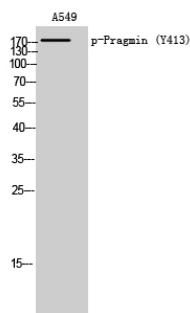


Figure 1. Western blotting validation for Anti-Phospho-Pragmin (Y413) PRAG1 Antibody A32113Y413

Western Blot (WB) analysis of A549 cells using Phospho-Pragmin (Y413) polyclonal antibody. Electrophoresis was performed on a SDS-PAGE gel. To determine SDS-PAGE gel concentration

Submit a product review to Biocompare.com

Submit a review of this product to Biocompare.com to receive a \$20 Amazon.com giftcard! Your reviews help your fellow scientists make the right decisions. Thank you for your contribution.



Anti-Phospho-Pragmin (Y413) PRAG1 Antibody