

## Anti-MESDC2/MESD Antibody Picoband®

Catalog Number: A32230-1

### About MESD

Mesoderm development candidate genes 1 (MESDC1) and 2 (MESDC2) were identified from the mesoderm development (MESD) deletion interval located on mouse chromosome 7. MESD acts as a chaperone for low-density lipoprotein receptor (LDLR) proteins in the ER, and particularly associates with Wnt signaling pathway coreceptors LRP5 and LRP6. MESD is required for proper LRP5/6 folding and maturation to the cell surface, which plays a major role in Wnt signaling. The interaction between MESD and LRP5 is disrupted by a G171V mutation in LRP5 that is found in individuals with a familial phenotype characterized by high bone mass.

### Overview

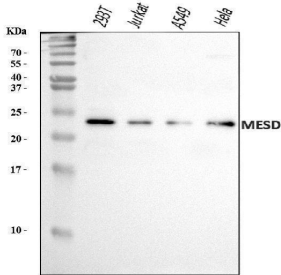
Product Name	Anti-MESDC2/MESD Antibody Picoband®
Reactive Species	Human
Description	Boster Bio Anti-MESDC2/MESD Antibody Picoband® catalog # A32230-1. Tested in ELISA, Flow Cytometry, WB applications. This antibody reacts with Human. The brand Picoband indicates this is a premium antibody that guarantees superior quality, high affinity, and strong signals with minimal background in Western blot applications. Only our best-performing antibodies are designated as Picoband, ensuring unmatched performance.
Application	ELISA, Flow Cytometry, WB
Clonality	Polyclonal
Formulation	Each vial contains 4 mg Trehalose, 0.9 mg NaCl, 0.2 mg Na <sub>2</sub> HPO <sub>4</sub> .
Storage Instructions	At -20°C for one year from date of receipt. After reconstitution, at 4°C for one month. It can also be aliquotted and stored frozen at -20°C for six months. Avoid repeated freezing and thawing.
Host	Rabbit
Uniprot ID	Q14696

### Technical Details

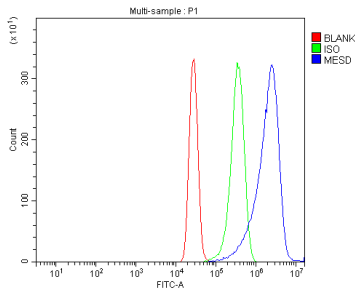
Immunogen	E.coli-derived human MESDC2/MESD recombinant protein (Position: D80-Q205).
Recommended Detection Systems	Boster recommends Enhanced Chemiluminescent Kit with anti-Rabbit IgG (EK1002) for Western blot.
Cross Reactivity	No cross-reactivity with other proteins.
Isotype	Rabbit IgG
Form	Lyophilized
Concentration	Adding 0.2 ml of distilled water will yield a concentration of 500 ug/ml.

Purification	Immunogen affinity purified.
Suggested Dilutions	Western blot, 0.25-0.5 ug/ml, Human Flow Cytometry (Fixed), 1-3 ug/1x10 <sup>6</sup> cells, Human ELISA, 0.1-0.5 ug/ml, -

## Anti-MESDC2/MESD Antibody Picoband® (A32230-1) Images



Western blot analysis of MESDC2/MESD using anti-MESDC2/MESD antibody (A32230-1). Electrophoresis was performed on a 5-20% SDS-PAGE gel at 70V (Stacking gel) / 90V (Resolving gel) for 2-3 hours. The sample well of each lane was loaded with 30 ug of sample under reducing conditions. Lane 1: human 293T whole cell lysates, Lane 2: human Jurkat whole cell lysates, Lane 3: human A549 whole cell lysates, Lane 4: human HeLa whole cell lysates. After electrophoresis, proteins were transferred to a nitrocellulose membrane at 150 mA for 50-90 minutes. Blocked the membrane with 5% non-fat milk/TBS for 1.5 hour at RT. The membrane was incubated with rabbit anti-MESDC2/MESD antigen affinity purified polyclonal antibody (Catalog # A32230-1) at 0.5 ug/mL overnight at 4°C, then washed with TBS-0.1%Tween 3 times with 5 minutes each and probed with a goat anti-rabbit IgG-HRP secondary antibody at a dilution of 1:5000 for 1.5 hour at RT. The signal is developed using an Enhanced Chemiluminescent detection (ECL) kit (Catalog # EK1002) with Tanon 5200 system. A specific band was detected for MESDC2/MESD at approximately 24 kDa. The expected band size for MESDC2/MESD is at 26 kDa.



Flow Cytometry analysis of K562 cells using anti-MESDC2/MESD antibody (A32230-1). Overlay histogram showing K562 cells stained with A32230-1 (Blue line). To facilitate intracellular staining, cells were fixed with 4% paraformaldehyde and permeabilized with permeabilization buffer. The cells were blocked with 10% normal goat serum. And then incubated with rabbit anti-MESDC2/MESD Antibody (A32230-1, 1 ug/1x10<sup>6</sup> cells) for 30 min at 20°C. DyLight®488 conjugated goat anti-rabbit IgG (BA1127, 5-10 ug/1x10<sup>6</sup> cells) was used as secondary antibody for 30 minutes at 20°C. Isotype control antibody (Green line) was rabbit IgG (1 ug/1x10<sup>6</sup>) used under the same conditions. Unlabelled sample without incubation with primary antibody and secondary antibody (Red line) was used as a blank control.

### Submit a product review to Biocompare.com

Submit a review of this product to Biocompare.com to receive a \$20 Amazon.com giftcard! Your reviews help your fellow scientists make the right decisions. Thank you for your contribution.



Anti-MESDC2/MESD Antibody

For Research Use Only. Not for use in diagnostic procedures.