

Anti-ALS2CR11 C2CD6 Antibody

Catalog Number: A32253

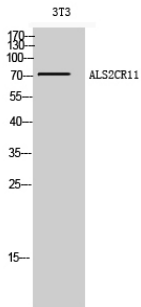
Overview

Product Name	Anti-ALS2CR11 C2CD6 Antibody
Reactive Species	Human, Mouse
Description	Boster Bio Anti-ALS2CR11 C2CD6 Antibody catalog # A32253. Tested in WB, ELISA applications. This antibody reacts with Human, Mouse.
Application	ELISA, WB
Clonality	Polyclonal
Formulation	Liquid in PBS containing 50% glycerol, 0.5% stabilizing protein and 0.02% sodium azide. This antibody is supplied in a stabilized formulation. Compatibility with conjugation reactions depends on the chemistry of the conjugation method used. For conjugation methods that are not compatible with the stabilizing components present in this formulation, a carrier-free antibody format is required.
Storage Instructions	Store at -20°C for one year. For short term storage and frequent use, store at 4°C for up to one month. Avoid repeated freeze-thaw cycles.
Host	Rabbit
Uniprot ID	Q53TS8

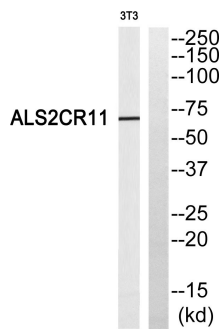
Technical Details

Immunogen	The antiserum was produced against synthesized peptide derived from human ALS2CR11. AA range:491-540
Isotype	IgG
Form	Liquid
Concentration	1 mg/ml
Purification	The antibody was affinity-purified from rabbit antiserum by affinity-chromatography using epitope-specific immunogen.
Suggested Dilutions	WB 1:500-1:2000 ELISA 1:40000

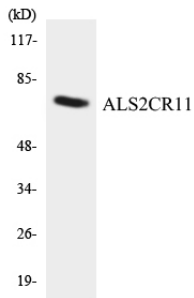
Anti-ALS2CR11 C2CD6 Antibody (A32253) Images



Western Blot analysis of 3T3 cells using ALS2CR11 Polyclonal Antibody



Western blot analysis of ALS2CR11 Antibody. The lane on the right is blocked with the ALS2CR11 peptide.



Western blot analysis of the lysates from COLO205 cells using ALS2CR11 antibody.

Submit a product review to [Biocompare.com](https://www.biocompare.com)

Submit a review of this product to [Biocompare.com](https://www.biocompare.com) to receive a \$20 Amazon.com giftcard! Your reviews help your fellow scientists make the right decisions. Thank you for your contribution.



Anti-ALS2CR11 C2CD6 Antibody

For Research Use Only. Not for use in diagnostic procedures.