

## Anti-BRCC45 BABAM2 Antibody

Catalog Number: A32264

### About BRE

BRCC45 was initially suggested to be a housekeeping protein that is highly expressed in brain and reproductive organs. Later experiments indicated BRCC45 forms a complex with the breast and ovarian predisposition proteins BRCA1 and BRCA2 as well as RAD51 and BRCC36. This complex has a ubiquitin E3 ligase activity and is thought to enhance cellular survival following DNA damage. BRCC45 has also been suggested to function as a death receptor-associated anti-apoptotic protein by inhibiting the BID-induced activation of the mitochondrial apoptotic pathway. Higher levels of BRCC45 were detected in the majority of hepatocellular carcinomas, suggesting that BRCC45 may promote tumorigenesis when overexpressed. At least three isoforms of BRCC45 are known to exist.

### Overview

Product Name	Anti-BRCC45 BABAM2 Antibody
Reactive Species	Human, Mouse, Rat
Description	Boster Bio Anti-BRCC45 BABAM2 Antibody (Catalog # A32264). Tested in ELISA, WB, IHC-P, IF applications. This antibody reacts with Human, Mouse, Rat.
Application	ELISA, IF, IHC-P, WB
Clonality	Polyclonal
Formulation	BRCC45 Antibody is supplied in PBS containing 0.02% sodium azide.
Storage Instructions	BRCC45 antibody can be stored at 4°C for three months and -20°C, stable for up to one year. Avoid repeated freeze-thaw cycles. Antibodies should not be exposed to prolonged high temperatures.
Host	Rabbit
Uniprot ID	Q9NXR7

### Technical Details

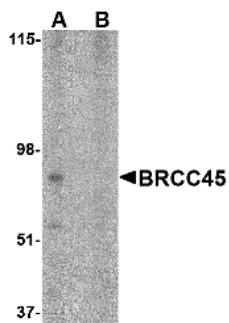
Immunogen	BRCC45 antibody was raised against a 18 amino acid synthetic peptide from near the amino terminus of human BRCC45. The immunogen is located within the last 50 amino acids of BRCC45.
Predicted Reactive Species	Bovine, Chicken
Isotype	IgG
Form	Liquid
Concentration	1 mg/mL
Purification	BRCC45 Antibody is affinity chromatography purified via peptide column.

**Suggested Dilutions**

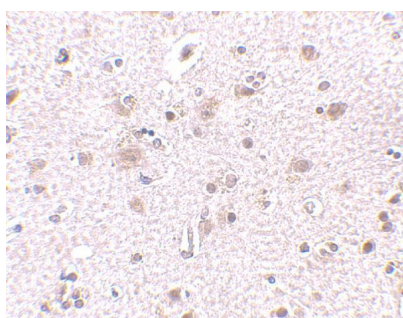
BRCC45 antibody can be used for detection of BRCC45 by Western blot at 1 ug/mL. Antibody can also be used for immunohistochemistry starting at 2.5 ug/mL. For immunofluorescence start at 20 ug/mL.

Antibody validated: Western Blot in human samples; Immunohistochemistry in human samples and Immunofluorescence in human samples. All other applications and species not yet tested. Optimal dilutions for each application should be determined by the researcher.

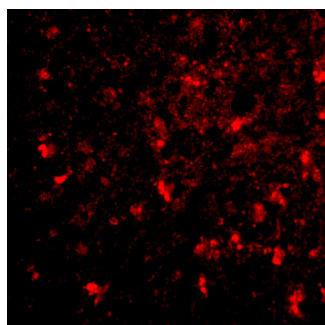
## Anti-BRCC45 BABAM2 Antibody (A32264) Images



Western blot analysis of BRCC45 in HeLa cell lysate in (A) the absence and (B) presence of blocking peptide with BRCC45 antibody at 1 ug/mL.



Immunohistochemistry of BRCC45 in human brain tissue with BRCC45 antibody at 2.5 ug/mL.



Immunofluorescence of BRCC45 in human brain tissue with BRCC45 antibody at 20 ug/mL.

### Submit a product review to [Biocompare.com](https://www.biocompare.com)

Submit a review of this product to [Biocompare.com](https://www.biocompare.com) to receive a \$20 Amazon.com giftcard! Your reviews help your fellow scientists make the right decisions. Thank you for your contribution.



Anti-BRCC45 BABAM2 Antibody

For Research Use Only. Not for use in diagnostic procedures.