

Anti-ATP5D Antibody (C-term)

Catalog Number: A32272

About ATP5F1D

Mitochondrial membrane ATP synthase (F(1)F(0) ATP synthase or Complex V) produces ATP from ADP in the presence of a proton gradient across the membrane which is generated by electron transport complexes of the respiratory chain. F-type ATPases consist of two structural domains, F(1) - containing the extramembraneous catalytic core, and F(0) - containing the membrane proton channel, linked together by a central stalk and a peripheral stalk. During catalysis, ATP turnover in the catalytic domain of F(1) is coupled via a rotary mechanism of the central stalk subunits to proton translocation. Part of the complex F(1) domain and of the central stalk which is part of the complex rotary element. Rotation of the central stalk against the surrounding alpha(3)beta(3) subunits leads to hydrolysis of ATP in three separate catalytic sites on the beta subunits.

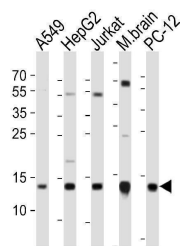
Overview

Product Name	Anti-ATP5D Antibody (C-term)
Reactive Species	Human, Mouse, Rat
Description	Boster Bio Anti-ATP5D Antibody (C-term) (Catalog # A32272). Tested in WB application(s). This antibody reacts with Human, Mouse, Rat.
Application	WB
Clonality	Polyclonal
Formulation	Purified polyclonal antibody supplied in PBS with 0.09% (W/V) sodium azide.
Storage Instructions	Maintain refrigerated at 2-8°C for up to 2 weeks. For long-term storage, store at -20°C in small aliquots to prevent freeze-thaw cycles.
Host	Rabbit
Uniprot ID	P30049

Technical Details

Immunogen	This ATP5D antibody is generated from a rabbit immunized with a KLH conjugated synthetic peptide between 156-188 amino acids from the C-terminal region of human ATP5D.
Predicted Reactive Species	Bovine
Isotype	Rabbit IgG
Purification	This antibody is purified through a protein A column, followed by peptide affinity purification.
Suggested Dilutions	WB: 1:1000-1:4000

Anti-ATP5D Antibody (C-term) (A32272) Images



Western blot analysis of lysates from A549, HepG2, Jurkat cell line, mouse brain tissue lysate, rat PC-12 cell line (from left to right), using ATP5D Antibody (C-term). A32272 was diluted at 1:1000 at each lane. A goat anti-rabbit IgG H&L (HRP) at 1:10000 dilution was used as the secondary antibody. Lysates at 20ug per lane.

Submit a product review to Biocompare.com

Submit a review of this product to Biocompare.com to receive a \$20 Amazon.com giftcard! Your reviews help your fellow scientists make the right decisions. Thank you for your contribution.



Anti-ATP5D Antibody (C-term)

For Research Use Only. Not for use in diagnostic procedures.