

Anti-LECT1 CNMD Antibody

Catalog Number: A32278

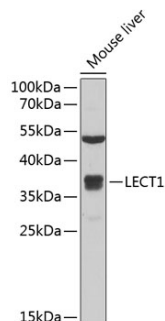
Overview

Product Name	Anti-LECT1 CNMD Antibody
Reactive Species	Human, Mouse
Description	Boster Bio Anti-LECT1 CNMD Antibody catalog # A32278. Tested in WB,ICC/IF applications. This antibody reacts with Human,Mouse.
Application	IF, ICC, WB
Clonality	Polyclonal
Formulation	Rabbit IgG, 1mg/ml in PBS with 0.02% sodium azide, 50% glycerol, pH7.2
Storage Instructions	Store at -20°C for one year. For short term storage and frequent use, store at 4°C for up to one month. Avoid repeated freeze-thaw cycles.
Host	Rabbit
Uniprot ID	O75829

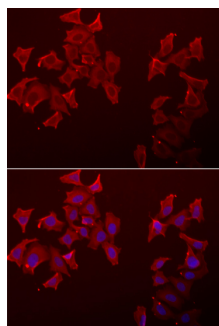
Technical Details

Immunogen	Recombinant fusion protein of human LECT1(NP_008946.1).
Form	Liquid
Purification	The antibody was affinity-purified from rabbit antiserum by affinity-chromatography using epitope-specific immunogen and the purity is > 95% (by SDS-PAGE).
Suggested Dilutions	WB: 1:500-1:2000 ICC/IF: 1:50-1:100

Anti-LECT1 CNMD Antibody (A32278) Images



Western blot analysis of extracts of mouse liver, using LECT1 antibody at 1:1000 dilution. Secondary antibody: HRP Goat Anti-Rabbit IgG at 1:10000 dilution. Lysates/proteins: 25ug per lane. Blocking buffer: 3% nonfat dry milk in TBST. Detection: ECL Basic Kit. Exposure time: 30s.



Immunofluorescence analysis of A549 cells using LECT1 antibody. Blue: DAPI for nuclear staining.

Submit a product review to [Biocompare.com](https://www.biocompare.com)

Submit a review of this product to [Biocompare.com](https://www.biocompare.com) to receive a \$20 Amazon.com giftcard! Your reviews help your fellow scientists make the right decisions. Thank you for your contribution.



Anti-LECT1 CNMD Antibody

For Research Use Only. Not for use in diagnostic procedures.