

Anti-Strumpellin WASHC5 Antibody

Catalog Number: A32325

About KIAA0196

Strumpellin is a ubiquitously expressed, multi-transmembrane and spectrin-repeat-containing protein. It is named for Strumpell disease; a progressive upper-motor neurodegenerative disease termed hereditary spastic paraplegia (HSP). The Strumpellin gene maps to the eighth HSP locus (SPG8) on chromosome 8p24.13. Three families linked to this locus have mutations in the Strumpellin gene; rescue studies of zebrafish with decreased Strumpellin expression with Strumpellin mRNA containing these mutations showed impaired normal function of this protein. Recent studies suggest that Strumpellin may also be involved in protein aggregation diseases.

Overview

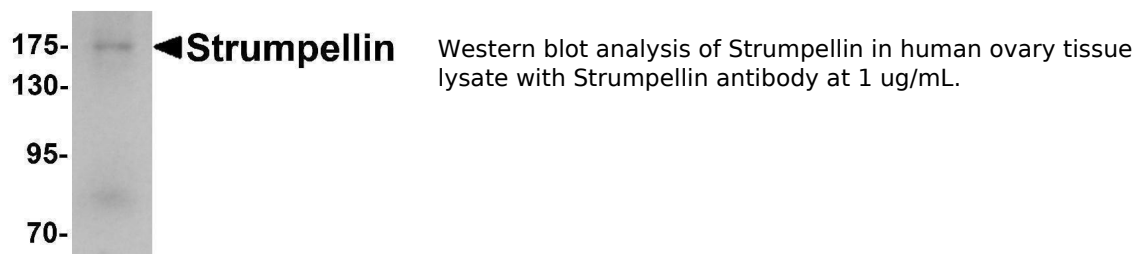
Product Name	Anti-Strumpellin WASHC5 Antibody
Reactive Species	Human, Mouse, Rat
Description	Boster Bio Anti-Strumpellin WASHC5 Antibody (Catalog # A32325). Tested in ELISA, WB applications. This antibody reacts with Human, Mouse, Rat.
Application	ELISA, WB
Clonality	Polyclonal
Formulation	Strumpellin Antibody is supplied in PBS containing 0.02% sodium azide.
Storage Instructions	Strumpellin antibody can be stored at 4°C for three months and -20°C, stable for up to one year. Avoid repeated freeze-thaw cycles. Antibodies should not be exposed to prolonged high temperatures.
Host	Rabbit
Uniprot ID	Q12768

Technical Details

Immunogen	Strumpellin antibody was raised against a 19 amino acid synthetic peptide near the carboxy terminus of human Strumpellin. The immunogen is located within the last 50 amino acids of Strumpellin.
Predicted Reactive Species	Mouse
Cross Reactivity	Multiple isoforms of Strumpellin are known to exist.
Isotype	IgG
Form	Liquid
Concentration	1 mg/mL

Purification	Strumpellin Antibody is affinity chromatography purified via peptide column.
Suggested Dilutions	Strumpellin antibody can be used for detection of Strumpellin by Western blot at 1 ug/mL. Antibody validated: Western Blot in human samples. All other applications and species not yet tested. Optimal dilutions for each application should be determined by the researcher.

Anti-Strumpellin WASHC5 Antibody (A32325) Images



Submit a product review to Biocompare.com

Submit a review of this product to Biocompare.com to receive a \$20 Amazon.com giftcard! Your reviews help your fellow scientists make the right decisions. Thank you for your contribution.



Anti-Strumpellin WASHC5 Antibody

For Research Use Only. Not for use in diagnostic procedures.