

Anti-ATP5J Antibody (Center)

Catalog Number: A32371-1

About ATP5PF

Mitochondrial ATP synthase catalyzes ATP synthesis, utilizing an electrochemical gradient of protons across the inner membrane during oxidative phosphorylation. It is composed of two linked multi-subunit complexes: the soluble catalytic core, F1, and the membrane-spanning component, Fo, which comprises the proton channel. The F1 complex consists of 5 different subunits (alpha, beta, gamma, delta, and epsilon) assembled in a ratio of 3 alpha, 3 beta, and a single representative of the other 3. The Fo seems to have nine subunits (a, b, c, d, e, f, g, F6 and 8). This gene encodes the F6 subunit of the Fo complex, required for F1 and Fo interactions. Alternatively spliced transcript variants encoding different isoforms have been identified for this gene. A pseudogene exists on chromosome Yp11.

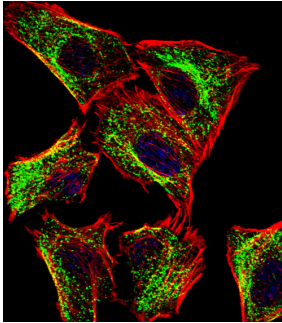
Overview

Product Name	Anti-ATP5J Antibody (Center)
Reactive Species	Human, Mouse, Rat
Description	Boster Bio Anti-ATP5J Antibody (Center) (Catalog # A32371-1). Tested in WB, IF, IHC-P application(s). This antibody reacts with Human, Mouse, Rat.
Application	IF, IHC-P, WB
Clonality	Polyclonal
Formulation	Purified polyclonal antibody supplied in PBS with 0.09% (W/V) sodium azide.
Storage Instructions	Maintain refrigerated at 2-8°C for up to 2 weeks. For long-term storage, store at -20°C in small aliquots to prevent freeze-thaw cycles.
Host	Rabbit
Uniprot ID	P18859

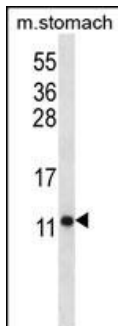
Technical Details

Immunogen	This ATP5J antibody is generated from rabbits immunized with a KLH conjugated synthetic peptide between 28-56 amino acids from the Central region of human ATP5J.
Predicted Reactive Species	Monkey
Isotype	Rabbit IgG
Purification	This antibody is purified through a protein A column, followed by peptide affinity purification.
Suggested Dilutions	IF: 1:10-1:50 WB: 1:1000 IHC-P: 1:10-1:50

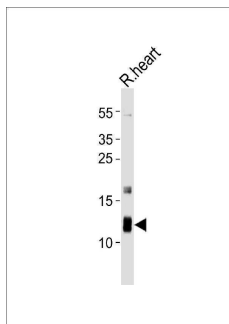
Anti-ATP5J Antibody (Center) (A32371-1) Images



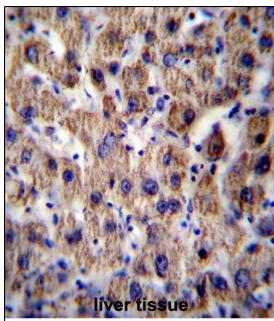
Fluorescent confocal image of U251 cell stained with ATP5J Antibody (Center). U251 cells were fixed with 4% PFA (20 min), permeabilized with Triton X-100 (0.1%, 10 min), then incubated with ATP5J primary antibody (1:25, 1 h at 37°C). For secondary antibody, Alexa Fluor® 488 conjugated donkey anti-rabbit antibody (green) was used (1:400, 50 min at 37°C). Cytoplasmic actin was counterstained with Alexa Fluor® 555 (red) conjugated Phalloidin (7 units/ml, 1 h at 37°C). Nuclei were counterstained with DAPI (blue) (10 µg/ml, 10 min). ATP5J immunoreactivity is localized to Mitochondria significantly.



ATP5J Antibody (Center) western blot analysis in mouse stomach tissue lysates (35 µg/lane). This demonstrates the ATP5J antibody detected the ATP5J protein (arrow).



Western blot analysis of lysate from rat heart tissue lysate, using ATP5J Antibody (Center). A32371-1 was diluted at 1:1000. A goat anti-rabbit IgG H&L (HRP) at 1:10000 dilution was used as the secondary antibody. Lysate at 20 µg.



ATP5J Antibody (Center) immunohistochemistry analysis in formalin fixed and paraffin embedded human liver tissue followed by peroxidase conjugation of the secondary antibody and DAB staining. This data demonstrates the use of ATP5J Antibody (Center) for immunohistochemistry. Clinical relevance has not been evaluated.

Submit a product review to Biocompare.com

Submit a review of this product to Biocompare.com to receive a \$20 Amazon.com giftcard! Your reviews help your fellow scientists make the right decisions. Thank you for your contribution.



Anti-ATP5J Antibody (Center)

For Research Use Only. Not for use in diagnostic procedures.