

Anti-ATP5H (D146) ATP5PD Antibody

Catalog Number: A32377

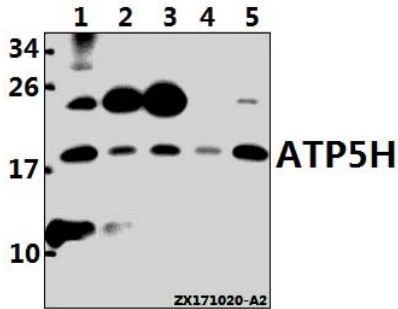
Overview

Product Name	Anti-ATP5H (D146) ATP5PD Antibody
Reactive Species	Human, Mouse, Rat
Description	Boster Bio Anti-ATP5H (D146) ATP5PD Antibody catalog # A32377. Tested in WB,IHC applications. This antibody reacts with Human,Mouse,Rat.
Application	IHC, WB
Clonality	Polyclonal
Formulation	Rabbit IgG, 1mg/ml in PBS with 0.02% sodium azide, 50% glycerol, pH7.2
Storage Instructions	Store at -20°C for one year. For short term storage and frequent use, store at 4°C for up to one month. Avoid repeated freeze-thaw cycles.
Host	Rabbit
Uniprot ID	O75947

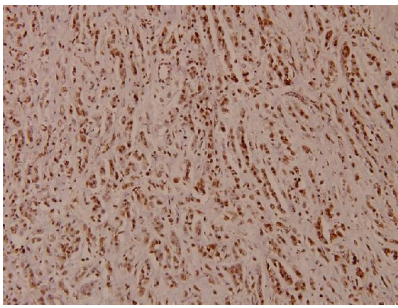
Technical Details

Immunogen	Synthetic peptide, corresponding to amino acids 121-170 of Human ATP5H.
Isotype	IgG
Form	Liquid
Concentration	1 mg/ml
Purification	The antibody was affinity-purified from rabbit antiserum by affinity-chromatography using epitope-specific immunogen and the purity is > 95% (by SDS-PAGE).
Suggested Dilutions	WB: 1:500-1:1000 IHC: 1:50-1:200 IP: 1:10-1:100

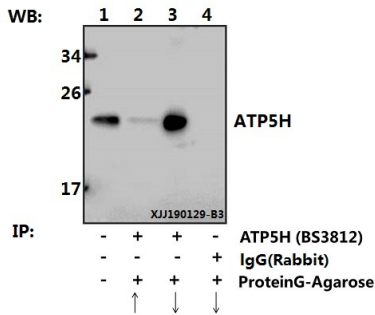
Anti-ATP5H (D146) ATP5PD Antibody (A32377) Images



Western blot (WB) analysis of ATP5H (D146) pAb at 1:500 dilution Lane1:HeLa whole cell lysate(40ug) Lane2:MCF-7 whole cell lysate(40ug) Lane3:H1792 whole cell lysate(40ug) Lane4:C6 whole cell lysate(40ug) Lane5:AML-12 whole cell lysate(40ug)



Immunohistochemistry (IHC) analyzes of ATP5H (D146) pAb in paraffin-embedded human breast carcinoma tissue at 1:100.



Immunoprecipitation of HEK293T cell lysate using ATP5H (D146) polyclonal antibody (Sepharose Bead Conjugate) #BD0048(lane 2 and lane 3) and Nonspecific IgG Control (Sepharose Bead Conjugate) #BD0048 (lane 4).Lane 1 is 30% input.The western blot was probed using ATP5H (D146) #BS3812.“↑”[supernatant];“↓”(deposition)

Submit a product review to Biocompare.com

Submit a review of this product to Biocompare.com to receive a \$20 Amazon.com giftcard! Your reviews help your fellow scientists make the right decisions. Thank you for your contribution.



Anti-ATP5H (D146) ATP5PD Antibody

For Research Use Only. Not for use in diagnostic procedures.