

Anti-ADAP FYB1 Antibody

Catalog Number: A32410

About FYB

The adhesion and degranulation adaptor protein (ADAP) was initially identified as a molecular adapter that couples T cell receptor (TCR) stimulation to the avidity of integrins governing T cell adhesion. TCR stimulation promotes the formation of a multi-protein complex containing CARMA1, MALT1, and BCL-10, which through the association of ADAP, ultimately activates the NF-kappaB family of transcription factors. More recent experiments have shown that ADAP controls optimal T cell proliferation, cytokine production, and expression of the Bcl-2 family member Bcl-x(L), suggesting that ADAP regulates T cell activation by promoting antigen-dependent T cell-antigen presenting cell (APC) activation. At least three isoforms of ADAP are known to exist.

Overview

Product Name	Anti-ADAP FYB1 Antibody
Reactive Species	Human, Mouse
Description	Boster Bio Anti-ADAP FYB1 Antibody (Catalog # A32410). Tested in ELISA, WB, ICC, IF applications. This antibody reacts with Human, Mouse.
Application	ELISA, IF, ICC, WB
Clonality	Polyclonal
Formulation	ADAP Antibody is supplied in PBS containing 0.02% sodium azide.
Storage Instructions	ADAP antibody can be stored at 4°C for three months and -20°C, stable for up to one year. Avoid repeated freeze-thaw cycles. Antibodies should not be exposed to prolonged high temperatures.
Host	Rabbit
Uniprot ID	O15117

Technical Details

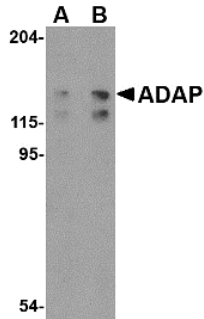
Immunogen	ADAP antibody was raised against a 20 amino acid synthetic peptide from near the carboxy terminus of human ADAP. The immunogen is located within amino acids 640 - 690 of ADAP.
Predicted Reactive Species	Chicken
Isotype	IgG
Form	Liquid
Concentration	1 mg/mL
Purification	ADAP Antibody is affinity chromatography purified via peptide column.

Suggested Dilutions

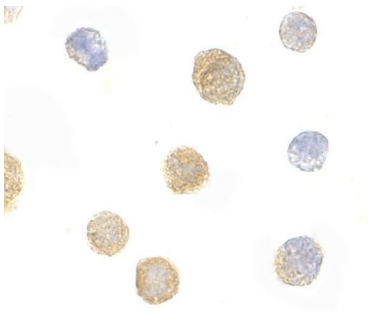
ADAP antibody can be used for detection of ADAP by Western blot at 0.5 - 1 ug/mL. Antibody can also be used for immunocytochemistry starting at 10 ug/mL. For immunofluorescence start at 20 ug/mL.

Antibody validated: Western Blot in human samples and Immunocytochemistry in human samples. All other applications and species not yet tested. Optimal dilutions for each application should be determined by the researcher.

Anti-ADAP FYB1 Antibody (A32410) Images



Western blot analysis of ADAP in K562 cell lysate with ADAP antibody at (A) 0.5 and (B) 1 ug/mL.



Immunocytochemistry of ADAP in K562 cells with ADAP antibody at 10 ug/mL.

Submit a product review to [Biocompare.com](https://www.biocompare.com)

Submit a review of this product to [Biocompare.com](https://www.biocompare.com) to receive a \$20 Amazon.com giftcard! Your reviews help your fellow scientists make the right decisions. Thank you for your contribution.



Anti-ADAP FYB1 Antibody

For Research Use Only. Not for use in diagnostic procedures.