

Anti-Lyz1/2 Antibody Picoband®

Catalog Number: A32724

About Lyz1/2

Lysozymes are secreted proteins that have bacteriolytic function which are critical for mammalian innate immune function. All lysozymes function to defend host animals from microbial infection by the hydrolysis of bacterial cell wall peptidoglycan. Conventional-type lysozymes (Lysozyme C) are one of three types of lysozymes; each family member is categorized based on amino acid sequence and biochemical properties. Lysozyme C is expressed in mammalian secretions like tears, urine, and milk but is also expressed by phagocytes such as macrophages, neutrophils, and dendritic cells. Lysozyme C is encoded in humans by a single LYZ gene. The mouse orthologs of Lysozyme C are encoded by two genes, Lyz1 and Lyz2, which encode Lysozyme C-1 and Lysozyme C-2 (Lysozyme C-1/2). Interestingly, Lyz2 is upregulated in microglia of Alzheimer's disease mouse model brains that have been stimulated by specific forms of activity. Lyz1 and Lyz2 are uniquely expressed in microglia, and increased Lyz2 correlates with microglia-mediated beta-amyloid (A β) clearance, suggesting that Lysozyme C-1/2 may directly contribute to microglial-clearance of A β or act as a marker for certain microglial activity states in the brain.

Overview

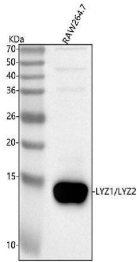
Product Name	Anti-Lyz1/2 Antibody Picoband®
Reactive Species	Mouse
Description	Boster Bio Anti-Lyz1/2 Antibody Picoband® catalog # A32724. Tested in ELISA, IHC, WB applications. This antibody reacts with Mouse, Rat. The brand Picoband indicates this is a premium antibody that guarantees superior quality, high affinity, and strong signals with minimal background in Western blot applications. Only our best-performing antibodies are designated as Picoband, ensuring unmatched performance.
Application	ELISA, IHC, WB
Clonality	Polyclonal
Formulation	Each vial contains 4 mg Trehalose, 0.9 mg NaCl, 0.2 mg Na ₂ HPO ₄ .
Storage Instructions	At -20°C for one year from date of receipt. After reconstitution, at 4°C for one month. It can also be aliquotted and stored frozen at -20°C for six months. Avoid repeated freezing and thawing.
Host	Rabbit
Uniprot ID	P17897/P08905

Technical Details

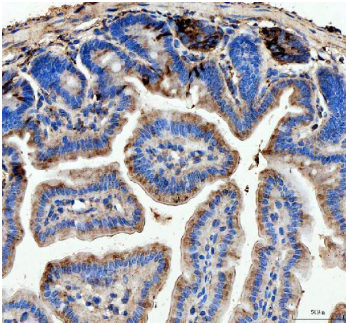
Immunogen	E.coli-derived mouse Lyz1/2 recombinant protein (Position: K19-V148). Mouse Lyz1/2 shares 84.6% amino acid (aa) sequence identity with rat Lyz1/2.
Form	Lyophilized
Concentration	Adding 0.2 ml of distilled water will yield a concentration of 500 μ g/ml.

Purification	Immunogen affinity purified.
Suggested Dilutions	Western blot, 0.25-0.5 ug/ml, Mouse Immunohistochemistry(Paraffin-embedded Section), 2-5 ug/ml, Mouse, Rat ELISA, 0.1-0.5 ug/ml, -

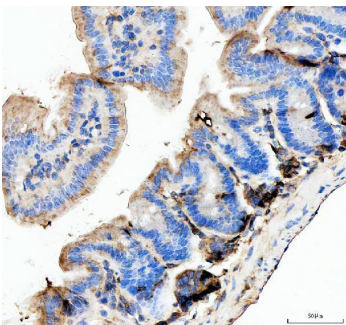
Anti-Lyz1/2 Antibody Picoband® (A32724) Images



Western blot analysis of Lyz1/2 using anti-Lyz1/2 antibody (A32724). Electrophoresis was performed on a 5-20% SDS-PAGE gel at 70V (Stacking gel) / 90V (Resolving gel) for 2-3 hours. The sample well of each lane was loaded with 30 ug of sample under reducing conditions. Lane 1: mouse RAW264.7 whole cell lysates. After electrophoresis, proteins were transferred to a nitrocellulose membrane at 150 mA for 50-90 minutes. Blocked the membrane with 5% non-fat milk/TBS for 1.5 hour at RT. The membrane was incubated with rabbit anti-Lyz1/2 antigen affinity purified polyclonal antibody (Catalog # A32724) at 0.5 ug/mL overnight at 4°C, then washed with TBS-0.1%Tween 3 times with 5 minutes each and probed with a goat anti-rabbit IgG-HRP secondary antibody at a dilution of 1:5000 for 1.5 hour at RT. The signal is developed using an Enhanced Chemiluminescent detection (ECL) kit (Catalog # EK1002) with Tanon 5200 system. A specific band was detected for Lyz1/2 at approximately 14 kDa. The expected band size for Lyz1/2 is at 17 kDa.

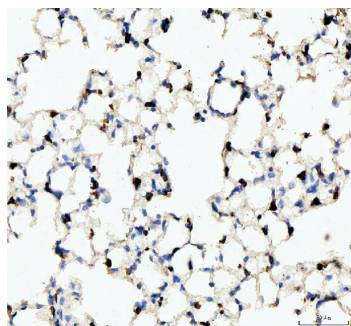


IHC analysis of Lyz1/2 using anti-Lyz1/2 antibody (A32724). Lyz1/2 was detected in a paraffin-embedded section of mouse colon tissue. Heat mediated antigen retrieval was performed in EDTA buffer (pH 8.0, epitope retrieval solution). The tissue section was blocked with 10% goat serum. The tissue section was then incubated with 2 ug/ml rabbit anti-Lyz1/2 Antibody (A32724) overnight at 4°C. Peroxidase Conjugated Goat Anti-rabbit IgG was used as secondary antibody and incubated for 30 minutes at 37°C. The tissue section was developed using HRP Conjugated Rabbit IgG Super Vision Assay Kit (Catalog # SV0002) with DAB as the chromogen.

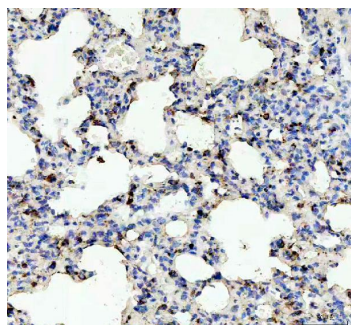


IHC analysis of Lyz1/2 using anti-Lyz1/2 antibody (A32724). Lyz1/2 was detected in a paraffin-embedded section of mouse colon tissue. Heat mediated antigen retrieval was performed in EDTA buffer (pH 8.0, epitope retrieval solution). The tissue section was blocked with 10% goat serum. The tissue section was then incubated with 2 ug/ml rabbit anti-Lyz1/2 Antibody (A32724) overnight at 4°C. Peroxidase Conjugated Goat Anti-rabbit IgG was used as secondary antibody and incubated for 30 minutes at 37°C. The tissue section was developed using HRP Conjugated Rabbit IgG Super Vision Assay Kit (Catalog # SV0002) with DAB as the chromogen.

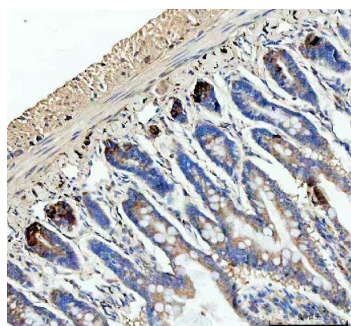
IHC analysis of Lyz1/2 using anti-Lyz1/2 antibody (A32724). Lyz1/2 was detected in a paraffin-embedded section of mouse lung tissue. Heat mediated antigen retrieval was performed in EDTA buffer (pH 8.0, epitope retrieval solution). The tissue section was blocked with 10% goat serum. The tissue section was then incubated with 2 ug/ml



rabbit anti-Lyz1/2 Antibody (A32724) overnight at 4°C. Peroxidase Conjugated Goat Anti-rabbit IgG was used as secondary antibody and incubated for 30 minutes at 37°C. The tissue section was developed using HRP Conjugated Rabbit IgG Super Vision Assay Kit (Catalog # SV0002) with DAB as the chromogen.



IHC analysis of Lyz1/2 using anti-Lyz1/2 antibody (A32724). Lyz1/2 was detected in a paraffin-embedded section of rat lung tissue. Heat mediated antigen retrieval was performed in EDTA buffer (pH 8.0, epitope retrieval solution). The tissue section was blocked with 10% goat serum. The tissue section was then incubated with 2 ug/ml rabbit anti-Lyz1/2 Antibody (A32724) overnight at 4°C. Peroxidase Conjugated Goat Anti-rabbit IgG was used as secondary antibody and incubated for 30 minutes at 37°C. The tissue section was developed using HRP Conjugated Rabbit IgG Super Vision Assay Kit (Catalog # SV0002) with DAB as the chromogen.



IHC analysis of Lyz1/2 using anti-Lyz1/2 antibody (A32724). Lyz1/2 was detected in a paraffin-embedded section of rat colon tissue. Heat mediated antigen retrieval was performed in EDTA buffer (pH 8.0, epitope retrieval solution). The tissue section was blocked with 10% goat serum. The tissue section was then incubated with 2 ug/ml rabbit anti-Lyz1/2 Antibody (A32724) overnight at 4°C. Peroxidase Conjugated Goat Anti-rabbit IgG was used as secondary antibody and incubated for 30 minutes at 37°C. The tissue section was developed using HRP Conjugated Rabbit IgG Super Vision Assay Kit (Catalog # SV0002) with DAB as the chromogen.

Submit a product review to [Biocompare.com](https://www.biocompare.com)

Submit a review of this product to [Biocompare.com](https://www.biocompare.com) to receive a \$20 Amazon.com giftcard! Your reviews help your fellow scientists make the right decisions. Thank you for your contribution.



Anti-Lyz1/2 Antibody

For Research Use Only. Not for use in diagnostic procedures.