

## Anti-Tim 2/Timd2 Antibody Picoband™

Catalog Number: A32807

### About Timd2

Enables ferritin receptor activity. Acts upstream of or within iron ion transport. Located in cell surface. Is expressed in 4-cell stage embryo; liver; liver left lobe; liver right lobe; and metanephros. Human ortholog(s) of this gene implicated in atopic dermatitis. Orthologous to human HAVCR1 (hepatitis A virus cellular receptor 1).

### Overview

|                      |   |
|----------------------|---|
| Product Name         | Anti-Tim 2/Timd2 Antibody Picoband™   |
| Reactive Species     | Mouse, Rat  |
| Description          | Boster Bio Anti-Tim 2/Timd2 Antibody Picoband™ catalog # A32807. Tested in Flow Cytometry, IF, IHC, WB applications. This antibody reacts with Mouse, Rat.  |
| Application          | Flow Cytometry, IHC, WB   |
| Clonality            | Polyclonal  |
| Formulation          | Each vial contains 4 mg Trehalose, 0.9 mg NaCl, 0.2 mg Na <sub>2</sub> HPO <sub>4</sub> .   |
| Storage Instructions | At -20°C for one year from date of receipt. After reconstitution, at 4°C for one month. It can also be aliquotted and stored frozen at -20°C for six months. Avoid repeated freezing and thawing. |
| Host                 | Rabbit  |
| Uniprot ID           | Q8R183  |

### Technical Details

|                               |  |
|-------------------------------|--|
| Immunogen                     | A synthetic peptide corresponding to a sequence at the C-terminus of mouse Tim 2/Timd2, which shares 73.9% amino acid (aa) sequence identity with rat Timd2.                     |
| Predicted Reactive Species    | Hepatitis Virus  |
| Recommended Detection Systems | Boster recommends Enhanced Chemiluminescent Kit with anti-Rabbit IgG (EK1002) for Western blot, and HRP Conjugated anti-Rabbit IgG Super Vision Assay Kit (SV0002-1) for IHC(P). |
| Cross Reactivity              | No cross-reactivity with other proteins.   |
| Isotype                       | Rabbit IgG   |
| Form                          | Lyophilized  |
| Concentration                 | Adding 0.2 ml of distilled water will yield a concentration of 500 µg/ml.  |
| Purification                  | Immunogen affinity purified.   |

**Suggested Dilutions**

Dilute the sample so that the expected range of concentrations fall within the detection range of this kit.

If the expected range of concentration is unknown, a pilot test should be conducted to decide the optimal dilution ratio for your samples.

Some PubMed article(s) citing the expression level of this target are as follows:

Boster Bio's internal QC testing used:

Western blot, 0.25-0.5 µg/ml, Mouse

Immunohistochemistry(Paraffin-embedded Section), 2-5 µg/ml, Mouse, Rat

Immunofluorescence, 5 ug/ml, Mouse

Flow Cytometry, 1-3 µg/1x10<sup>6</sup> cells, Mouse

## Anti-Tim 2/Timd2 Antibody Picoband™ (A32807) Images

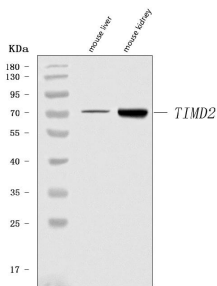


Figure 1. Western blot analysis of Tim 2/Timd2 using anti-Tim 2/Timd2 antibody (A32807).

Electrophoresis was performed on a 5-20% SDS-PAGE gel at 70V (Stacking gel) / 90V (Resolving gel) for 2-3 hours. The sample well of each lane was loaded with 30 ug of sample under reducing conditions.

Lane 1: mouse liver tissue lysates,

Lane 2: mouse kidney tissue lysates.

After electrophoresis, proteins were transferred to a nitrocellulose membrane at 150 mA for 50-90 minutes. Blocked the membrane with 5% non-fat milk/TBS for 1.5 hour at RT. The membrane was incubated with rabbit anti-Tim 2/Timd2 antigen affinity purified polyclonal antibody (Catalog # A32807) at 0.5 ug/mL overnight at 4°C, then washed with TBS-0.1%Tween 3 times with 5 minutes each and probed with a goat anti-rabbit IgG-HRP secondary antibody at a dilution of 1:5000 for 1.5 hour at RT. The signal is developed using an Enhanced Chemiluminescent detection (ECL) kit (Catalog # EK1002) with Tanon 5200 system. A specific band was detected for Tim 2/Timd2 at approximately 70 kDa. The expected band size for Tim 2/Timd2 is at 34 kDa.

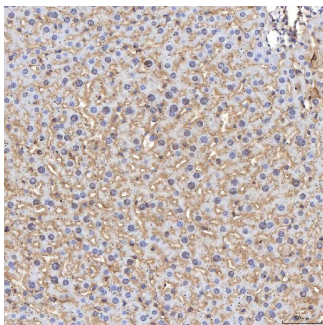


Figure 2. IHC analysis of Tim 2/Timd2 using anti-Tim 2/Timd2 antibody (A32807).

Tim 2/Timd2 was detected in a paraffin-embedded section of mouse liver tissue. Heat mediated antigen retrieval was performed in EDTA buffer (pH 8.0, epitope retrieval solution). The tissue section was blocked with 10% goat serum. The tissue section was then incubated with 2 ug/ml rabbit anti-Tim 2/Timd2 Antibody (A32807) overnight at 4°C. Peroxidase Conjugated Goat Anti-rabbit IgG was used as secondary antibody and incubated for 30 minutes at 37°C. The tissue section was developed using HRP Conjugated Rabbit IgG Super Vision Assay Kit (Catalog # SV0002) with DAB as the chromogen.

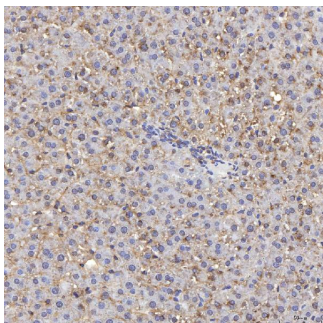
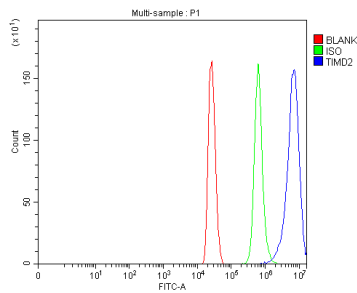


Figure 3. IHC analysis of Tim 2/Timd2 using anti-Tim 2/Timd2 antibody (A32807).

Tim 2/Timd2 was detected in a paraffin-embedded section of rat liver tissue. Heat mediated antigen retrieval was performed in EDTA buffer (pH 8.0, epitope retrieval solution). The tissue section was blocked with 10% goat serum. The tissue section was then incubated with 2 ug/ml rabbit anti-Tim 2/Timd2 Antibody (A32807) overnight at 4°C. Peroxidase Conjugated Goat Anti-rabbit IgG was used as secondary antibody and incubated for 30 minutes at 37°C. The tissue section was developed using HRP Conjugated Rabbit IgG Super Vision Assay Kit (Catalog # SV0002) with DAB as the chromogen.

Figure 4. Flow Cytometry analysis of HEPA1-6 cells using anti-



Tim 2/Timd2 antibody (A32807).

Overlay histogram showing HEPA1-6 cells stained with A32807 (Blue line). The cells were blocked with 10% normal goat serum. And then incubated with rabbit anti-Tim 2/Timd2 Antibody (A32807, 1 ug/1x10<sup>6</sup> cells) for 30 min at 20°C. DyLight®488 conjugated goat anti-rabbit IgG (BA1127, 5-10 ug/1x10<sup>6</sup> cells) was used as secondary antibody for 30 minutes at 20°C. Isotype control antibody (Green line) was rabbit IgG (1 ug/1x10<sup>6</sup>) used under the same conditions. Unlabelled sample (Red line) was also used as a control.

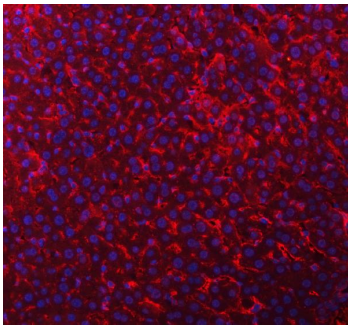


Figure 5. IF analysis of Tim 2/Timd2 using anti-Tim 2/Timd2 antibody (A32807).

Tim 2/Timd2 was detected in a paraffin-embedded section of mouse liver tissue. Heat mediated antigen retrieval was performed in EDTA buffer (pH 8.0, epitope retrieval solution). The tissue section was blocked with 10% goat serum. The tissue section was then incubated with 5 ug/mL rabbit anti-Tim 2/Timd2 Antibody (A32807) overnight at 4°C. DyLight®550 Conjugated Goat Anti-Rabbit IgG (BA1135) was used as secondary antibody at 1:500 dilution and incubated for 30 minutes at 37°C. The section was counterstained with DAPI. Visualize using a fluorescence microscope and filter sets appropriate for the label used.

## Submit a product review to Biocompare.com

Submit a review of this product to Biocompare.com to receive a \$20 Amazon.com giftcard! Your reviews help your fellow scientists make the right decisions. Thank you for your contribution.



Anti-Tim 2/Timd2 Antibody