

Anti-Toll-like receptor 11 TLR11 Antibody

Catalog Number: A33174

About TLR11

Toll-like receptors (TLRs) are signaling molecules that recognize different microbial products during infection and serve as an important link between the innate and adaptive immune responses. These proteins act through adaptor molecules such as MyD88 and TIRAP to activate various kinases and transcription factors. TLR11 is one of three mouse TLRs that lack a human ortholog. It is activated specifically by uropathogenic bacteria, and mice lacking TLR11 showed a much greater susceptibility to uropathogenic infections, indicating a potentially important role for TLR11 in preventing infections in the urogenital system.

Overview

| | |
|----------------------|--|
| Product Name | Anti-Toll-like receptor 11 TLR11 Antibody |
| Reactive Species | Mouse |
| Description | Boster Bio Anti-Toll-like receptor 11 TLR11 Antibody (Catalog # A33174). Tested in ELISA, WB, ICC, IF applications. This antibody reacts with Mouse. |
| Application | ELISA, IF, ICC, WB |
| Clonality | Polyclonal |
| Formulation | TLR11 Antibody is supplied in PBS containing 0.02% sodium azide. |
| Storage Instructions | TLR11 antibody can be stored at 4°C for three months and -20°C, stable for up to one year. Avoid repeated freeze-thaw cycles. Antibodies should not be exposed to prolonged high temperatures. |
| Host | Rabbit |
| Uniprot ID | Q6R5P0 |

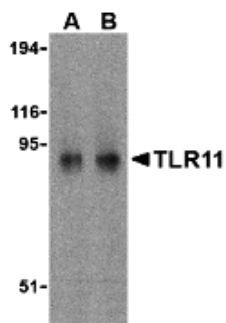
Technical Details

| | |
|----------------------------|--|
| Immunogen | TLR11 antibody was raised against a peptide corresponding to 15 amino acids near the carboxy terminus of mouse TLR11. The immunogen is located within the last 50 amino acids of TLR11. |
| Predicted Reactive Species | Human |
| Isotype | IgG |
| Form | Liquid |
| Concentration | 1 mg/mL |
| Purification | TLR11 Antibody is Ion exchange chromatography purified. |
| Suggested Dilutions | TLR11 antibody can be used for detection of TLR11 by Western blot at 0.5 to 1 ug/mL. Antibody can also be used for immunocytochemistry starting at 2 ug/mL. For immunofluorescence start at 10 |

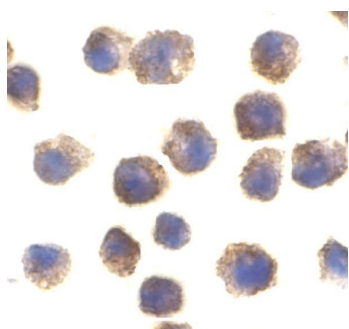
ug/mL.

Antibody validated: Western Blot in mouse samples; Immunocytochemistry in mouse samples and Immunofluorescence in mouse samples. All other applications and species not yet tested. Optimal dilutions for each application should be determined by the researcher.

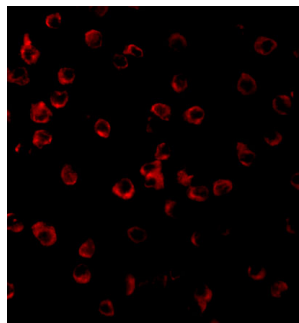
Anti-Toll-like receptor 11 TLR11 Antibody (A33174) Images



Western blot analysis of TLR11 in RAW264.7 cell lysates with TLR11 antibody at (A) 0.5 and (B) 1 ug/mL.



Immunocytochemical staining of RAW264.7 cells using TLR11 antibody at 2 ug/mL.



Immunofluorescence of TLR11 in Raw264.7 cells with TLR11 antibody at 10 ug/mL.

Submit a product review to [Biocompare.com](https://www.biocompare.com)

Submit a review of this product to [Biocompare.com](https://www.biocompare.com) to receive a \$20 Amazon.com giftcard! Your reviews help your fellow scientists make the right decisions. Thank you for your contribution.



Anti-Toll-like receptor 11 TLR11 Antibody

For Research Use Only. Not for use in diagnostic procedures.