

## Anti-KLRA2 Antibody

Catalog Number: A33282

### About KLRA2

KLRA2 (also known as Ly49B) is a member of the LY49 family of receptors in Natural Killer (NK) cells that bind to major histocompatibility complex (MHC) class 1. These proteins are classified as either activating or inhibitory receptors based on whether they possess an immunoreceptor tyrosine-based inhibitory motif (ITIM) in their cytoplasmic region (for inhibitory receptors), or an immunoreceptor tyrosine-based activation motif (ITAM) that transmits activating signals resulting in phosphorylation of several substrates. KLRA2 is thought to be an inhibitory receptor and associates with the protein tyrosine phosphatases SHP1, SHP2, and SHIP in transfected cells. This antibody is predicted to not cross-react with other LY49 receptors.

### Overview

Product Name	Anti-KLRA2 Antibody
Reactive Species	Mouse, Rat
Description	Boster Bio Anti-KLRA2 Antibody (Catalog # A33282). Tested in ELISA, WB, IHC-P, IF applications. This antibody reacts with Mouse, Rat.
Application	ELISA, IF, IHC-P, WB
Clonality	Polyclonal
Formulation	KLRA2 Antibody is supplied in PBS containing 0.02% sodium azide.
Storage Instructions	KLRA2 antibody can be stored at 4°C for three months and -20°C, stable for up to one year. Avoid repeated freeze-thaw cycles. Antibodies should not be exposed to prolonged high temperatures.
Host	Rabbit
Uniprot ID	Q60660

### Technical Details

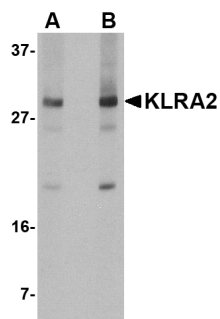
Immunogen	KLRA2 antibody was raised against a 14 amino acid synthetic peptide near the carboxy terminus of mouse KLRA2. The immunogen is located within the last 50 amino acids of KLRA2.
Predicted Reactive Species	Human
Isotype	IgG
Form	Liquid
Concentration	1 mg/mL
Purification	KLRA2 Antibody is affinity chromatography purified via peptide column.

**Suggested Dilutions**

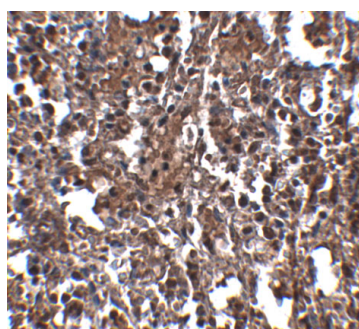
KLRA2 antibody can be used for detection of KLRA2 by Western blot at 0.5 - 1 ug/mL. Antibody can also be used for immunohistochemistry starting at 2.5 ug/mL. For immunofluorescence start at 20 ug/mL.

Antibody validated: Western Blot in mouse samples and Immunohistochemistry in mouse samples. All other applications and species not yet tested. Optimal dilutions for each application should be determined by the researcher.

## Anti-KLRA2 Antibody (A33282) Images



Western blot analysis of KLRA2 in mouse spleen tissue lysate with KLRA2 antibody at (A) 0.5 and (B) 1 ug/mL.



Immunohistochemistry of KLRA2 in mouse spleen tissue with KLRA2 antibody at 2.5 ug/mL.

### Submit a product review to [Biocompare.com](https://www.biocompare.com)

Submit a review of this product to [Biocompare.com](https://www.biocompare.com) to receive a \$20 Amazon.com giftcard! Your reviews help your fellow scientists make the right decisions. Thank you for your contribution.



Anti-KLRA2 Antibody

For Research Use Only. Not for use in diagnostic procedures.