

Anti-MFSD2A Antibody

Catalog Number: A33936

About MFSD2AA

Multidrug transporters, such as MFSD2A, are membrane proteins that expel a wide spectrum of cytotoxic compounds from the cell and render cells resistant to multiple drugs. Major Facilitator Superfamily (MFS) members are capable of transporting various substrates such as sugars, polyols, drugs, neurotransmitters, amino acids, peptides, and inorganic anions, although most members are substrate-specific. MFSD2A is a novel lung cancer tumor suppressor gene that regulates cell cycle progression and matrix attachment and has recently been described as the human receptor for syncytin-2, a retrovirus-derived protein mediating fusion of placental trophoblasts. MFSD2A is expressed in many tissues and is highly induced in liver and brown adipose tissue (BAT) during fasting. The activation of the betaAR signaling pathway plays a major role in the induction of MFSD2A expression during adaptive thermogenesis.

Overview

Product Name	Anti-MFSD2A Antibody
Reactive Species	Human, Mouse, Rat
Description	Boster Bio Anti-MFSD2A Antibody (Catalog # A33936). Tested in ELISA, WB, IHC-P, IF applications. This antibody reacts with Human, Mouse, Rat.
Application	ELISA, IF, IHC-P, WB
Clonality	Polyclonal
Formulation	MFSD2A Antibody is supplied in PBS containing 0.02% sodium azide.
Storage Instructions	MFSD2A antibody can be stored at 4°C up to one year. Antibodies should not be exposed to prolonged high temperatures.
Host	Rabbit
Uniprot ID	Q5U3U7

Technical Details

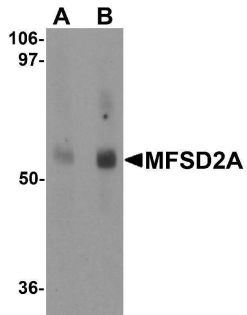
Immunogen	MFSD2A antibody was raised against an 18 amino acid synthetic peptide near the carboxy terminus of human MFSD2A. The immunogen is located within the last 50 amino acids of MFSD2A.
Predicted Reactive Species	Human
Isotype	IgG
Form	Liquid
Concentration	1 mg/mL
Purification	MFSD2A Antibody is affinity chromatography purified via peptide column.

Suggested Dilutions

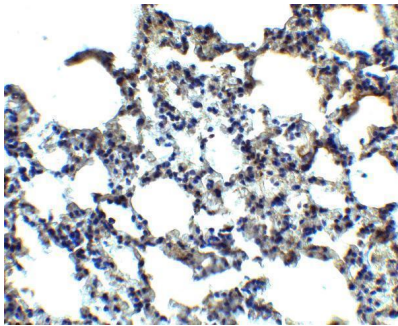
MFSD2A antibody can be used for detection of MFSD2A by Western blot at 1 - 2 ug/mL. Antibody can also be used for immunohistochemistry starting at 5 ug/mL. For immunofluorescence start at 20 ug/mL.

Antibody validated: Western Blot in rat samples; Immunohistochemistry in human, mouse, and rat samples and Immunofluorescence in mouse and rat samples. All other applications and species not yet tested. Optimal dilutions for each application should be determined by the researcher.

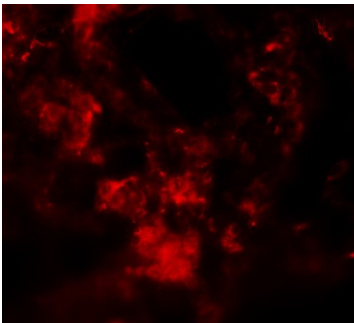
Anti-MFSD2A Antibody (A33936) Images



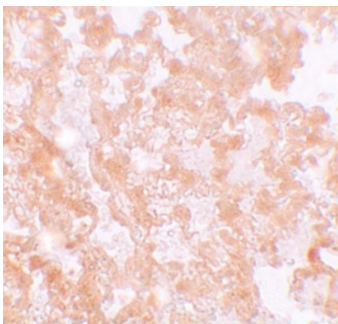
Western blot analysis of MFSD2A in rat lung tissue lysate with MFSD2A antibody at (A) 1 and (B) 2 ug/mL.



Immunohistochemistry of MFSD2A in mouse lung tissue with MFSD2A antibody at 2.5 ug/ml.

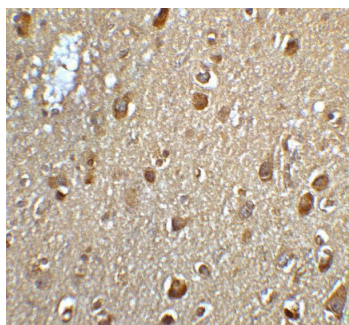
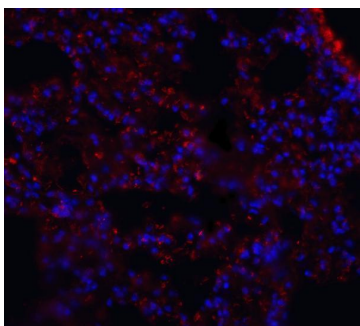


Immunofluorescence of MFSD2A in Rat Lung cells with MFSD2A antibody at 20 ug/mL.



Immunohistochemistry of MFSD2A in rat lung tissue with MFSD2A antibody at 5 ug/mL.

Immunofluorescence of MFSD2A in mouse lung tissue with MFSD2A antibody at 20 ug/mL. Red: MFSD2A Antibody (A33936) Blue: DAPI staining



Immunohistochemistry of MFSD2A in human brain tissue with MFSD2A antibody at 5 ug/mL.

Submit a product review to [Biocompare.com](https://www.biocompare.com)

Submit a review of this product to [Biocompare.com](https://www.biocompare.com) to receive a \$20 Amazon.com giftcard! Your reviews help your fellow scientists make the right decisions. Thank you for your contribution.



Anti-MFSD2A Antibody

For Research Use Only. Not for use in diagnostic procedures.