

## Anti-Zebrafish MCM2 Antibody Picoband®

Catalog Number: AZA0A0R4IF65

### About MCM2

MCM2(MINICHROMOSOME MAINTENANCE, S. CEREVISIAE, HOMOLOG OF, 2), also known as MITOTIN, CDCL1 or BM28, is a human nuclear protein that plays an important role in 2 crucial steps of the cell cycle, namely, onset of DNA replication and cell division. And it is similar to members of the family of early S-phase proteins. The MCM2 gene is mapped to 3q21.3. The hexameric protein complex formed by MCM proteins is a key component of the pre-replication complex (pre-RC) and may be involved in the formation of replication forks and in the recruitment of other DNA replication related proteins. In the G0 stage, the MCM2 and MCM5 proteins were much less abundant than the MCM7 and MCM3 proteins, which suggests that the MCM proteins are not present in stoichiometric amounts and that only a proportion of these molecules actively participate in cell cycle regulation as part of MCM complexes.

### Overview

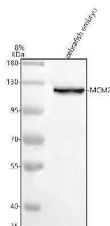
|                      |  |
|----------------------|--|
| Product Name         | Anti-Zebrafish MCM2 Antibody Picoband®   |
| Reactive Species     | Zebrafish  |
| Description          | Boster Bio Anti-Zebrafish MCM2 Antibody Picoband® catalog #AZA0A0R4IF65. Tested in WB applications. This antibody reacts with Zebrafish. The brand Picoband indicates this is a premium antibody that guarantees superior quality, high affinity, and strong signals with minimal background in Western blot applications. Only our best-performing antibodies are designated as Picoband, ensuring unmatched performance. |
| Application          | WB   |
| Clonality            | Polyclonal   |
| Formulation          | Each vial contains 4 mg Trehalose, 0.9 mg NaCl, 0.2 mg Na <sub>2</sub> HPO <sub>4</sub> .  |
| Storage Instructions | At -20°C for one year from date of receipt. After reconstitution, at 4°C for one month. It can also be aliquotted and stored frozen at -20°C for six months. Avoid repeated freezing and thawing.  |
| Host                 | Rabbit   |
| Uniprot ID           | A0A0R4IF65   |

### Technical Details

|                     |   |
|---------------------|---|
| Immunogen           | E.coli-derived zebrafish MCM2 recombinant protein (Position: A381-R835)   |
| Form                | Lyophilized   |
| Concentration       | Adding 0.2 ml of distilled water will yield a concentration of 500 ug/ml. |
| Purification        | Immunogen affinity purified.  |
| Suggested Dilutions | Western blot, 0.25-0.5 ug/ml, Zebrafish                                   |



## Anti-Zebrafish MCM2 Antibody Picoband® (AZA0A0R4IF65) Images



Western blot analysis of MCM2 using anti-MCM2 antibody (AZA0A0R4IF65). Electrophoresis was performed on a 8% SDS-PAGE gel at 80V (Stacking gel) / 120V (Resolving gel) for 2 hours. The sample well of each lane was loaded with 30 ug of sample under reducing conditions. Lane 1: zebrafish embryo tissue lysates. After electrophoresis, proteins were transferred to a nitrocellulose membrane at 150 mA for 50-90 minutes. Blocked the membrane with 5% non-fat milk/TBS for 1.5 hour at RT. The membrane was incubated with rabbit anti-MCM2 antigen affinity purified polyclonal antibody (AZA0A0R4IF65) at 0.5 ug/mL overnight at 4°C, then washed with TBS-0.1%Tween 3 times with 5 minutes each and probed with a goat anti-rabbit IgG-HRP secondary antibody at a dilution of 1:5000 for 1.5 hour at RT. The signal is developed using an ECL Plus Western Blotting Substrate (Catalog # AR1196-200) with Tanon 5200 system. A specific band was detected for MCM2 at approximately 125 kDa. The expected band size for MCM2 is at 102 kDa.

### Submit a product review to Biocompare.com

Submit a review of this product to Biocompare.com to receive a \$20 Amazon.com giftcard! Your reviews help your fellow scientists make the right decisions. Thank you for your contribution.



### Anti-Zebrafish MCM2 Antibody

For Research Use Only. Not for use in diagnostic procedures.