

Anti-Zebrafish PRPF6 Antibody Picoband®

Catalog Number: AZA0A2R8PWG5

About PRPF6

Pre-mRNA-processing factor 6 is a protein that in humans is encoded by the PRPF6 gene. The protein encoded by this gene appears to be involved in pre-mRNA splicing, possibly acting as a bridging factor between U5 and U4/U6 snRNPs in formation of the spliceosome. The encoded protein also can bind androgen receptor, providing a link between transcriptional activation and splicing.

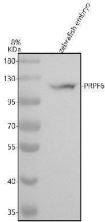
Overview

Product Name	Anti-Zebrafish PRPF6 Antibody Picoband®
Reactive Species	Zebrafish
Description	Boster Bio Anti-Zebrafish PRPF6 Antibody Picoband® catalog # AZA0A2R8PWG5. Tested in IF, WB applications. This antibody reacts with Zebrafish. The brand Picoband indicates this is a premium antibody that guarantees superior quality, high affinity, and strong signals with minimal background in Western blot applications. Only our best-performing antibodies are designated as Picoband, ensuring unmatched performance.
Application	WB
Clonality	Polyclonal
Formulation	Each vial contains 4 mg Trehalose, 0.9 mg NaCl, 0.2 mg Na ₂ HPO ₄ .
Storage Instructions	At -20°C for one year from date of receipt. After reconstitution, at 4°C for one month. It can also be aliquotted and stored frozen at -20°C for six months. Avoid repeated freezing and thawing.
Host	Rabbit
Uniprot ID	A0A2R8PWG5

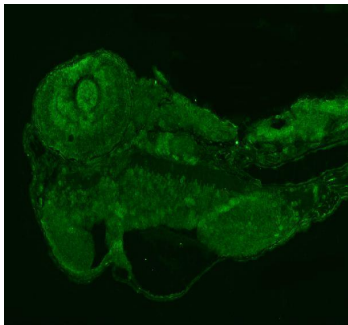
Technical Details

Immunogen	E.coli-derived zebrafish PRPF6 recombinant protein (Position: Q99-K618).
Form	Lyophilized
Concentration	Adding 0.2 ml of distilled water will yield a concentration of 500 ug/ml.
Purification	Immunogen affinity purified.
Suggested Dilutions	Western blot, 0.25-0.5 ug/ml, Zebrafish Immunofluorescence, 5 ug/ml, Zebrafish

Anti-Zebrafish PRPF6 Antibody Picoband® (AZA0A2R8PWG5) Images



Western blot analysis of PRPF6 using anti-PRPF6 antibody (AZA0A2R8PWG5). Electrophoresis was performed on a 8% SDS-PAGE gel at 80V (Stacking gel) / 120V (Resolving gel) for 2 hours. The sample well of each lane was loaded with 30 ug of sample under reducing conditions. Lane 1: zebrafish embryo tissue lysates. After electrophoresis, proteins were transferred to a nitrocellulose membrane at 150 mA for 50-90 minutes. Blocked the membrane with 5% non-fat milk/TBS for 1.5 hour at RT. The membrane was incubated with rabbit anti-PRPF6 antigen affinity purified polyclonal antibody (AZA0A2R8PWG5) at 0.5 ug/mL overnight at 4°C, then washed with TBS-0.1%Tween 3 times with 5 minutes each and probed with a goat anti-rabbit IgG-HRP secondary antibody at a dilution of 1:5000 for 1.5 hour at RT. The signal is developed using an ECL Plus Western Blotting Substrate (Catalog # AR1196-200) with Tanon 5200 system. A specific band was detected for PRPF6 at approximately 107 kDa. The expected band size for PRPF6 is at 107 kDa.



IF analysis of PRPF6 using anti-PRPF6 antibody (AZA0A2R8PWG5). PRPF6 was detected in a paraffin-embedded section of zebrafish embryo tissue. Heat mediated antigen retrieval was performed in EDTA buffer (pH 8.0, epitope retrieval solution). The tissue section was blocked with 10% goat serum. The tissue section was then incubated with 5 ug/mL rabbit anti-PRPF6 Antibody (AZA0A2R8PWG5) overnight at 4°C. DyLight®488 Conjugated Goat Anti-Rabbit IgG (BA1127) was used as secondary antibody at 1:500 dilution and incubated for 30 minutes at 37°C. Visualize using a fluorescence microscope and filter sets appropriate for the label used.

Submit a product review to Biocompare.com

Submit a review of this product to Biocompare.com to receive a \$20 Amazon.com giftcard! Your reviews help your fellow scientists make the right decisions. Thank you for your contribution.



Anti-Zebrafish PRPF6 Antibody

For Research Use Only. Not for use in diagnostic procedures.