

## Anti-Zebrafish TPH2 Antibody

Catalog Number: AZA0A8M1P7E6

### About TPH2

Predicted to enable tryptophan 5-monoxygenase activity. Acts upstream of or within regulation of hematopoietic stem cell differentiation. Predicted to be active in neuron projection. Is expressed in brain and neurons. Human ortholog(s) of this gene implicated in several diseases, including alcohol dependence; alcohol use disorder; anxiety disorder (multiple); autistic disorder; and drug dependence (multiple). Orthologous to human TPH2 (tryptophan hydroxylase 2).

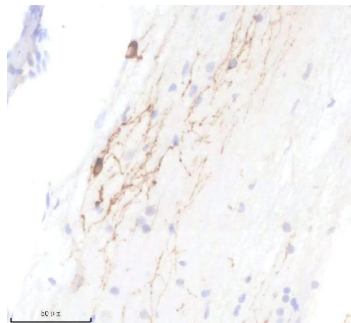
### Overview

Product Name	Anti-Zebrafish TPH2 Antibody
Reactive Species	Zebrafish
Description	Boster Bio Anti-Zebrafish TPH2 Antibody catalog # AZA0A8M1P7E6. Tested in IHC applications. This antibody reacts with Zebrafish.
Application	IHC
Clonality	Polyclonal
Formulation	Each vial contains 4 mg Trehalose, 0.9 mg NaCl, 0.2 mg Na <sub>2</sub> HPO <sub>4</sub> .
Storage Instructions	At -20°C for one year from date of receipt. After reconstitution, at 4°C for one month. It can also be aliquotted and stored frozen at -20°C for six months. Avoid repeated freezing and thawing.
Host	Rabbit
Uniprot ID	A0A8M1P7E6

### Technical Details

Immunogen	E.coli-derived Zebrafish TPH2 recombinant protein (Position: M1-V184).
Form	Lyophilized
Concentration	Adding 0.2 ml of distilled water will yield a concentration of 500 ug/ml.
Purification	Immunogen affinity purified.
Suggested Dilutions	Immunohistochemistry(Paraffin-embedded Section), 2-5 ug/ml, Zebrafish

## Anti-Zebrafish TPH2 Antibody (AZA0A8M1P7E6) Images



IHC analysis of TPH2 using anti-TPH2 antibody (AZA0A8M1P7E6). TPH2 was detected in a paraffin-embedded section of zebrafish spinal cord tissue. Heat mediated antigen retrieval was performed in EDTA buffer (pH 8.0, epitope retrieval solution). The tissue section was blocked with 10% goat serum. The tissue section was then incubated with 2 ug/ml rabbit anti-TPH2 Antibody (AZA0A8M1P7E6) overnight at 4°C. Peroxidase Conjugated Goat Anti-rabbit IgG was used as secondary antibody and incubated for 30 minutes at 37°C. The tissue section was developed using HRP Conjugated Rabbit IgG Super Vision Assay Kit (Catalog # SV0002) with DAB as the chromogen.

### Submit a product review to Biocompare.com

Submit a review of this product to Biocompare.com to receive a \$20 Amazon.com giftcard! Your reviews help your fellow scientists make the right decisions. Thank you for your contribution.



Anti-Zebrafish TPH2 Antibody

For Research Use Only. Not for use in diagnostic procedures.