

## Anti-Zebrafish IL-1 beta/IL1B Antibody

Catalog Number: AZA0A8M1PI54

### About IL1B

Interleukin-1 beta(IL-1beta) also known as catabolin, is a cytokine protein that in humans is encoded by the IL1B gene, which localizes to the long arm of chromosome 2 at position 2q13-2q21 between two fragile sites. Interleukin 1(IL-1) is a protein with several biological activities regulating host defense and immune responses. The human IL-1 family plays an important role in the pathogenesis of many diseases and functions as a key mediator of the host response to various infectious, inflammatory, and immunologic challenges.

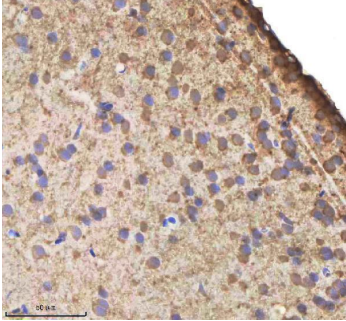
### Overview

|                      |   |
|----------------------|---|
| Product Name         | Anti-Zebrafish IL-1 beta/IL1B Antibody  |
| Reactive Species     | Zebrafish   |
| Description          | Boster Bio Anti-Zebrafish IL-1 beta/IL1B Antibody catalog #AZA0A8M1PI54. Tested in IHC applications. This antibody reacts with Zebrafish.   |
| Application          | IHC   |
| Clonality            | Polyclonal  |
| Formulation          | Each vial contains 4 mg Trehalose, 0.9 mg NaCl, 0.2 mg Na <sub>2</sub> HPO <sub>4</sub> .   |
| Storage Instructions | At -20°C for one year from date of receipt. After reconstitution, at 4°C for one month. It can also be aliquotted and stored frozen at -20°C for six months. Avoid repeated freezing and thawing. |
| Host                 | Rabbit  |
| Uniprot ID           | A0A8M1PI54  |

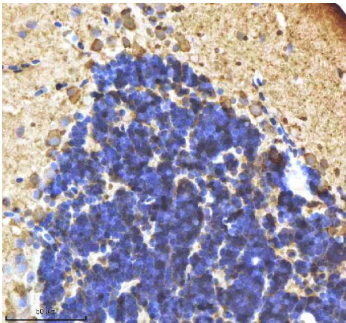
### Technical Details

|                     |   |
|---------------------|---|
| Immunogen           | E.coli-derived zebrafish IL-1 beta/IL1B recombinant protein (Position: M1-I284) |
| Form                | Lyophilized   |
| Concentration       | Adding 0.2 ml of distilled water will yield a concentration of 500 ug/ml.       |
| Purification        | Immunogen affinity purified.  |
| Suggested Dilutions | Immunohistochemistry(Paraffin-embedded Section), 2-5 ug/ml, Zebrafish           |

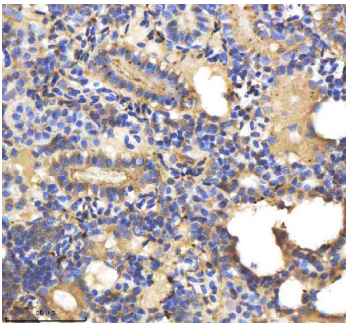
## Anti-Zebrafish IL-1 beta/IL1B Antibody (AZA0A8M1PI54) Images



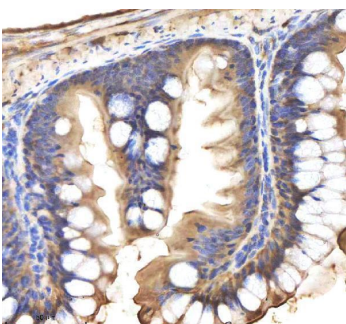
IHC analysis of IL-1 beta/IL1B using anti-IL-1 beta/IL1B antibody (AZA0A8M1PI54). IL-1 beta/IL1B was detected in a paraffin-embedded section of zebrafish brain tissue. Heat mediated antigen retrieval was performed in EDTA buffer (pH 8.0, epitope retrieval solution). The tissue section was blocked with 10% goat serum. The tissue section was then incubated with 2 ug/ml rabbit anti-IL-1 beta/IL1B Antibody (AZA0A8M1PI54) overnight at 4°C. Peroxidase Conjugated Goat Anti-rabbit IgG was used as secondary antibody and incubated for 30 minutes at 37°C. The tissue section was developed using HRP Conjugated Rabbit IgG Super Vision Assay Kit (Catalog # SV0002) with DAB as the chromogen.



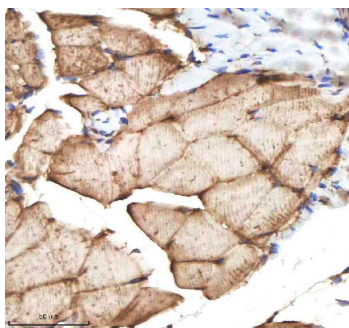
IHC analysis of IL-1 beta/IL1B using anti-IL-1 beta/IL1B antibody (AZA0A8M1PI54). IL-1 beta/IL1B was detected in a paraffin-embedded section of zebrafish cerebellum tissue. Heat mediated antigen retrieval was performed in EDTA buffer (pH 8.0, epitope retrieval solution). The tissue section was blocked with 10% goat serum. The tissue section was then incubated with 2 ug/ml rabbit anti-IL-1 beta/IL1B Antibody (AZA0A8M1PI54) overnight at 4°C. Peroxidase Conjugated Goat Anti-rabbit IgG was used as secondary antibody and incubated for 30 minutes at 37°C. The tissue section was developed using HRP Conjugated Rabbit IgG Super Vision Assay Kit (Catalog # SV0002) with DAB as the chromogen.



IHC analysis of IL-1 beta/IL1B using anti-IL-1 beta/IL1B antibody (AZA0A8M1PI54). IL-1 beta/IL1B was detected in a paraffin-embedded section of zebrafish kidney tissue. Heat mediated antigen retrieval was performed in EDTA buffer (pH 8.0, epitope retrieval solution). The tissue section was blocked with 10% goat serum. The tissue section was then incubated with 2 ug/ml rabbit anti-IL-1 beta/IL1B Antibody (AZA0A8M1PI54) overnight at 4°C. Peroxidase Conjugated Goat Anti-rabbit IgG was used as secondary antibody and incubated for 30 minutes at 37°C. The tissue section was developed using HRP Conjugated Rabbit IgG Super Vision Assay Kit (Catalog # SV0002) with DAB as the chromogen.



IHC analysis of IL-1 beta/IL1B using anti-IL-1 beta/IL1B antibody (AZA0A8M1PI54). IL-1 beta/IL1B was detected in a paraffin-embedded section of zebrafish colon tissue. Heat mediated antigen retrieval was performed in EDTA buffer (pH 8.0, epitope retrieval solution). The tissue section was blocked with 10% goat serum. The tissue section was then incubated with 2 ug/ml rabbit anti-IL-1 beta/IL1B Antibody (AZA0A8M1PI54) overnight at 4°C. Peroxidase Conjugated Goat Anti-rabbit IgG was used as secondary antibody and incubated for 30 minutes at 37°C. The tissue section was developed using HRP Conjugated Rabbit IgG Super Vision Assay Kit (Catalog # SV0002) with DAB as the chromogen.



IHC analysis of IL-1 beta/IL1B using anti-IL-1 beta/IL1B antibody (AZA0A8M1PI54). IL-1 beta/IL1B was detected in a paraffin-embedded section of zebrafish muscle tissue. Heat mediated antigen retrieval was performed in EDTA buffer (pH 8.0, epitope retrieval solution). The tissue section was blocked with 10% goat serum. The tissue section was then incubated with 2 ug/ml rabbit anti-IL-1 beta/IL1B Antibody (AZA0A8M1PI54) overnight at 4°C. Peroxidase Conjugated Goat Anti-rabbit IgG was used as secondary antibody and incubated for 30 minutes at 37°C. The tissue section was developed using HRP Conjugated Rabbit IgG Super Vision Assay Kit (Catalog # SV0002) with DAB as the chromogen.

## Submit a product review to [Biocompare.com](https://www.biocompare.com)

Submit a review of this product to [Biocompare.com](https://www.biocompare.com) to receive a \$20 Amazon.com giftcard! Your reviews help your fellow scientists make the right decisions. Thank you for your contribution.



Anti-Zebrafish IL-1 beta/IL1B Antibody

For Research Use Only. Not for use in diagnostic procedures.