

## Anti-Zebrafish ASH2L Antibody

Catalog Number: AZA0A8M2B2E1

### About ASH2L

Set1/Ash2 histone methyltransferase complex subunit ASH2 is an enzyme that in humans is encoded by the ASH2L gene. The Set1 histone methyltransferase protein was first identified in yeast as part of the Set1/COMPASS histone methyltransferase complex, which methylates histone H3 at Lys4 and functions as a transcriptional co-activator. While yeast contain only one known Set1 protein, six Set1-related proteins exist in mammals: SET1A, SET1B, MLL1, MLL2, MLL3, and MLL4, all of which assemble into COMPASS-like complexes and methylate histone H3 at Lys4. These Set1-related proteins are each found in distinct protein complexes, all of which share the common subunits WDR5, RBBP5, ASH2L, CXXC1 and DPY30. These subunits are required for proper complex assembly and modulation of histone methyltransferase activity. MLL1 and MLL2 complexes contain the additional protein subunit, menin. Like yeast Set1, all six Set1-related mammalian proteins methylate histone H3 at Lys4. MLL translocations are found in a large number of hematological malignancies, suggesting that Set1/COMPASS histone methyltransferase complexes play a critical role in leukemogenesis.

### Overview

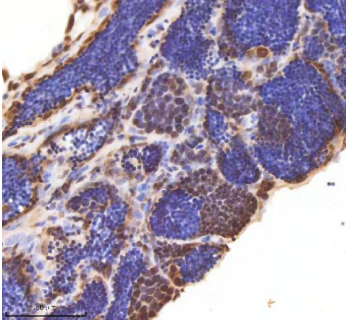
Product Name	Anti-Zebrafish ASH2L Antibody
Reactive Species	Zebrafish
Description	Boster Bio Anti-Zebrafish ASH2L Antibody catalog # AZA0A8M2B2E1. Tested in IHC, IF applications. This antibody reacts with Zebrafish.
Application	IF, IHC
Clonality	Polyclonal
Formulation	Each vial contains 4 mg Trehalose, 0.9 mg NaCl, 0.2 mg Na <sub>2</sub> HPO <sub>4</sub> .
Storage Instructions	At -20°C for one year from date of receipt. After reconstitution, at 4°C for one month. It can also be aliquotted and stored frozen at -20°C for six months. Avoid repeated freezing and thawing.
Host	Rabbit
Uniprot ID	A0A8M2B2E1

### Technical Details

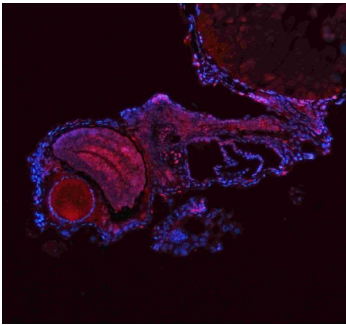
Immunogen	E.coli-derived zebrafish ASH2L recombinant protein (Position: N95-G584).
Form	Lyophilized
Concentration	Adding 0.2 ml of distilled water will yield a concentration of 500 ug/ml.
Purification	Immunogen affinity purified.
Suggested Dilutions	Immunohistochemistry(Paraffin-embedded Section), 2-5 ug/ml, Zebrafish Immunofluorescence, 5 ug/ml, Zebrafish



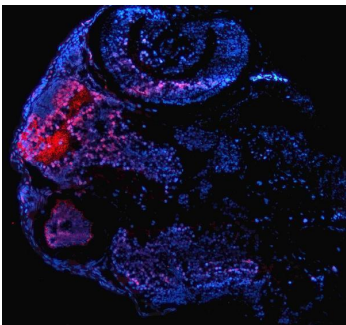
## Anti-Zebrafish ASH2L Antibody (AZA0A8M2B2E1) Images



IHC analysis of ASH2L using anti-ASH2L antibody (AZA0A8M2B2E1). ASH2L was detected in a paraffin-embedded section of zebrafish testis tissue. Heat mediated antigen retrieval was performed in EDTA buffer (pH 8.0, epitope retrieval solution). The tissue section was blocked with 10% goat serum. The tissue section was then incubated with 2 ug/ml rabbit anti-ASH2L Antibody (AZA0A8M2B2E1) overnight at 4°C. Peroxidase Conjugated Goat Anti-rabbit IgG was used as secondary antibody and incubated for 30 minutes at 37°C. The tissue section was developed using HRP Conjugated Rabbit IgG Super Vision Assay Kit (Catalog # SV0002) with DAB as the chromogen.

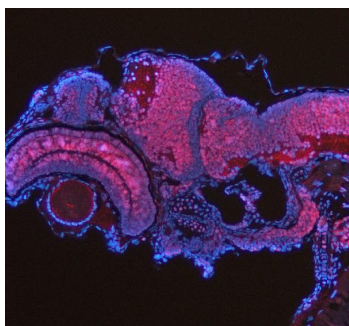


IF analysis of ASH2L using anti-ASH2L antibody (AZA0A8M2B2E1). ASH2L was detected in a paraffin-embedded section of zebrafish embryo tissue. Heat mediated antigen retrieval was performed in EDTA buffer (pH 8.0, epitope retrieval solution). The tissue section was blocked with 10% goat serum. The tissue section was then incubated with 5 ug/mL rabbit anti-ASH2L Antibody (AZA0A8M2B2E1) overnight at 4°C. Biotin conjugated goat anti-rabbit IgG (BA1003) was used as secondary antibody and incubated for 30 minutes at 37°C. The tissue section was developed using DyLight®594-conjugated Anti-rabbit IgG Secondary Antibody (red) (Catalog # BA1142). The section was counterstained with DAPI. Visualize using a fluorescence microscope and filter sets appropriate for the label used.



IF analysis of ASH2L using anti-ASH2L antibody (AZA0A8M2B2E1). ASH2L was detected in a paraffin-embedded section of zebrafish embryo tissue. Heat mediated antigen retrieval was performed in EDTA buffer (pH 8.0, epitope retrieval solution). The tissue section was blocked with 10% goat serum. The tissue section was then incubated with 5 ug/mL rabbit anti-ASH2L Antibody (AZA0A8M2B2E1) overnight at 4°C. Biotin conjugated goat anti-rabbit IgG (BA1003) was used as secondary antibody and incubated for 30 minutes at 37°C. The tissue section was developed using DyLight®594-conjugated Anti-rabbit IgG Secondary Antibody (red) (Catalog # BA1142). The section was counterstained with DAPI. Visualize using a fluorescence microscope and filter sets appropriate for the label used.

IF analysis of ASH2L using anti-ASH2L antibody (AZA0A8M2B2E1). ASH2L was detected in a paraffin-embedded section of zebrafish embryo tissue. Heat mediated antigen retrieval was performed in EDTA buffer (pH 8.0, epitope retrieval solution). The tissue section was blocked with 10% goat serum. The tissue section was then incubated with 5 ug/mL rabbit anti-ASH2L Antibody



(AZA0A8M2B2E1) overnight at 4°C. Biotin conjugated goat anti-rabbit IgG (BA1003) was used as secondary antibody and incubated for 30 minutes at 37°C. The tissue section was developed using DyLight®594-conjugated Anti-rabbit IgG Secondary Antibody (red) (Catalog # BA1142). The section was counterstained with DAPI. Visualize using a fluorescence microscope and filter sets appropriate for the label used.

## Submit a product review to [Biocompare.com](https://www.biocompare.com)

Submit a review of this product to [Biocompare.com](https://www.biocompare.com) to receive a \$20 Amazon.com giftcard! Your reviews help your fellow scientists make the right decisions. Thank you for your contribution.



Anti-Zebrafish ASH2L Antibody

For Research Use Only. Not for use in diagnostic procedures.