

Anti-Zebrafish SLC5A5 Antibody Picoband®

Catalog Number: AZA4IG60

About SLC5A5

Enables sodium:iodide symporter activity. Predicted to be involved in iodide transmembrane transport and sodium ion transport. Predicted to act upstream of or within monoatomic ion transport. Predicted to be located in plasma membrane. Is expressed in brain; ovary; pharynx; thyroid follicle; and thyroid primordium. Human ortholog(s) of this gene implicated in congenital hypothyroidism and thyroid dysgenesis 1. Orthologous to human SLC5A5 (solute carrier family 5 member 5).

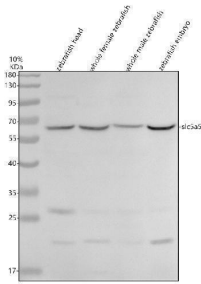
Overview

Product Name	Anti-Zebrafish SLC5A5 Antibody Picoband®
Reactive Species	Zebrafish
Description	Boster Bio Anti-Zebrafish SLC5A5 Antibody Picoband® catalog # AZA4IG60. Tested in WB applications. This antibody reacts with Zebrafish. The brand Picoband indicates this is a premium antibody that guarantees superior quality, high affinity, and strong signals with minimal background in Western blot applications. Only our best-performing antibodies are designated as Picoband, ensuring unmatched performance.
Application	WB
Clonality	Polyclonal
Formulation	Each vial contains 4 mg Trehalose, 0.9 mg NaCl, 0.2 mg Na ₂ HPO ₄ .
Storage Instructions	At -20°C for one year from date of receipt. After reconstitution, at 4°C for one month. It can also be aliquotted and stored frozen at -20°C for six months. Avoid repeated freezing and thawing.
Host	Rabbit
Uniprot ID	A4IG60

Technical Details

Immunogen	E.coli-derived Zebrafish SLC5A5 recombinant protein (Position: N262-I601).
Form	Lyophilized
Concentration	Adding 0.2 ml of distilled water will yield a concentration of 500 ug/ml.
Purification	Immunogen affinity purified.
Suggested Dilutions	Western blot, 0.25-0.5 ug/ml, Zebrafish

Anti-Zebrafish SLC5A5 Antibody Picoband® (AZA4IG60) Images



Western blot analysis of SLC5A5 using anti-SLC5A5 antibody (AZA4IG60). Electrophoresis was performed on a 10% SDS-PAGE gel at 80V (Stacking gel) / 120V (Resolving gel) for 2 hours. The sample well of each lane was loaded with 30 ug of sample under reducing conditions. Lane 1: zebrafish head tissue lysates, Lane 2: whole female zebrafish tissue lysates, Lane 3: whole male zebrafish tissue lysates, Lane 4: zebrafish embryo tissue lysates. After electrophoresis, proteins were transferred to a nitrocellulose membrane at 150 mA for 50-90 minutes. Blocked the membrane with 5% non-fat milk/TBS for 1.5 hour at RT. The membrane was incubated with rabbit anti-SLC5A5 antigen affinity purified polyclonal antibody (AZA4IG60) at 0.5 ug/mL overnight at 4°C, then washed with TBS-0.1% Tween 3 times with 5 minutes each and probed with a goat anti-rabbit IgG-HRP secondary antibody at a dilution of 1:5000 for 1.5 hour at RT. The signal is developed using an ECL Plus Western Blotting Substrate (Catalog # AR1196-200) with Tanon 5200 system. A specific band was detected for SLC5A5 at approximately 65 kDa. The expected band size for SLC5A5 is at 64 kDa.

Submit a product review to Biocompare.com

Submit a review of this product to Biocompare.com to receive a \$20 Amazon.com giftcard! Your reviews help your fellow scientists make the right decisions. Thank you for your contribution.



Anti-Zebrafish SLC5A5 Antibody

For Research Use Only. Not for use in diagnostic procedures.