

## Anti-Zebrafish SREBF1 Antibody

Catalog Number: AZA6XLD8

### About SREBF1

The sterol regulatory element binding transcription factor 1 (SREBF1) is a transcription factor that binds to the sterol regulatory element-1 (SRE1), which is a decamer flanking the low density lipoprotein receptor gene and some genes involved in sterol biosynthesis (1). The related protein SREBF2 also binds SRE1 and activates transcription in an additive fashion to SREBF1 (2). SREBF1 is synthesized as a precursor that is attached to the nuclear membrane and endoplasmic reticulum. Following cleavage, the mature protein translocates to the nucleus and activates transcription by binding to the SRE1 (3). The SREBF1 proteins are important in the regulation of genes involved in lipid metabolism, while SREBF2 has been more closely associated with cholesterol synthesis and accumulation (4).

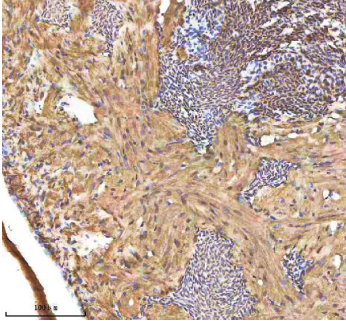
### Overview

Product Name	Anti-Zebrafish SREBF1 Antibody
Reactive Species	Zebrafish
Description	Boster Bio Anti-Zebrafish SREBF1 Antibody catalog #AZA6XLD8. Tested in IHC applications. This antibody reacts with Zebrafish.
Application	IHC
Clonality	Polyclonal
Formulation	Each vial contains 4 mg Trehalose, 0.9 mg NaCl, 0.2 mg Na <sub>2</sub> HPO <sub>4</sub> .
Storage Instructions	At -20°C for one year from date of receipt. After reconstitution, at 4°C for one month. It can also be aliquotted and stored frozen at -20°C for six months. Avoid repeated freezing and thawing.
Host	Rabbit
Uniprot ID	A6XLD8

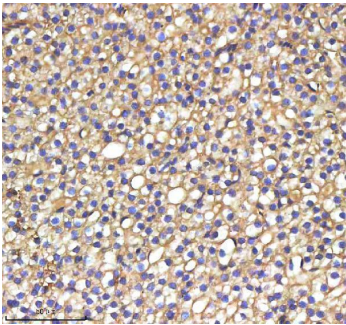
### Technical Details

Immunogen	E.coli-derived zebrafish SREBF1 recombinant protein (Position: H20-L1096)
Form	Lyophilized
Concentration	Adding 0.2 ml of distilled water will yield a concentration of 500 ug/ml.
Purification	Immunogen affinity purified.
Suggested Dilutions	Immunohistochemistry(Paraffin-embedded Section), 2-5 ug/ml, Zebrafish

## Anti-Zebrafish SREBF1 Antibody (AZA6XLD8) Images



IHC analysis of SREBF1 using anti-SREBF1 antibody (AZA6XLD8). SREBF1 was detected in a paraffin-embedded section of zebrafish heart tissue. Heat mediated antigen retrieval was performed in EDTA buffer (pH 8.0, epitope retrieval solution). The tissue section was blocked with 10% goat serum. The tissue section was then incubated with 2 ug/ml rabbit anti-SREBF1 Antibody (AZA6XLD8) overnight at 4°C. Peroxidase Conjugated Goat Anti-rabbit IgG was used as secondary antibody and incubated for 30 minutes at 37°C. The tissue section was developed using HRP Conjugated Rabbit IgG Super Vision Assay Kit (Catalog # SV0002) with DAB as the chromogen.



IHC analysis of SREBF1 using anti-SREBF1 antibody (AZA6XLD8). SREBF1 was detected in a paraffin-embedded section of zebrafish liver tissue. Heat mediated antigen retrieval was performed in EDTA buffer (pH 8.0, epitope retrieval solution). The tissue section was blocked with 10% goat serum. The tissue section was then incubated with 2 ug/ml rabbit anti-SREBF1 Antibody (AZA6XLD8) overnight at 4°C. Peroxidase Conjugated Goat Anti-rabbit IgG was used as secondary antibody and incubated for 30 minutes at 37°C. The tissue section was developed using HRP Conjugated Rabbit IgG Super Vision Assay Kit (Catalog # SV0002) with DAB as the chromogen.

### Submit a product review to [Biocompare.com](https://www.biocompare.com)

Submit a review of this product to [Biocompare.com](https://www.biocompare.com) to receive a \$20 Amazon.com giftcard! Your reviews help your fellow scientists make the right decisions. Thank you for your contribution.



Anti-Zebrafish SREBF1 Antibody

For Research Use Only. Not for use in diagnostic procedures.