

Anti-Zebrafish CBS Antibody Picoband®

Catalog Number: AZA9JT04

About CBS

CBS, Cystathionine Beta-Synthase, catalyzes the first irreversible step of transsulfuration. The CBS enzyme is a homotetramer of 63-kD subunits and requires pyridoxal phosphate and heme for activity. The CBS gene, which is mapped to chromosome 21q22, contains 23 exons, ranging in size from 42 to 299 bp. The human CBS protein can substitute for the endogenous yeast CBS protein in *Saccharomyces cerevisiae*. The catalytic domain of the CBS protein is located in the N-terminal 409 amino acids, and a regulatory domain is located in the C-terminal 142 amino acids. A mutation that deletes the C-terminal 145 amino acids of CBS could restore activity of several CBS mutant alleles found in homocystinurics.

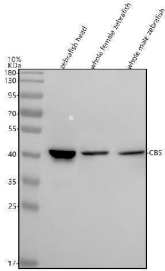
Overview

Product Name	Anti-Zebrafish CBS Antibody Picoband®
Reactive Species	Zebrafish
Description	Boster Bio Anti-Zebrafish CBS Antibody Picoband® catalog # AZA9JT04. Tested in WB, IHC applications. This antibody reacts with Zebrafish. The brand Picoband indicates this is a premium antibody that guarantees superior quality, high affinity, and strong signals with minimal background in Western blot applications. Only our best-performing antibodies are designated as Picoband, ensuring unmatched performance.
Application	IHC, WB
Clonality	Polyclonal
Formulation	Each vial contains 4 mg Trehalose, 0.9 mg NaCl, 0.2 mg Na ₂ HPO ₄ .
Storage Instructions	At -20°C for one year from date of receipt. After reconstitution, at 4°C for one month. It can also be aliquotted and stored frozen at -20°C for six months. Avoid repeated freezing and thawing.
Host	Rabbit
Uniprot ID	A9JT04

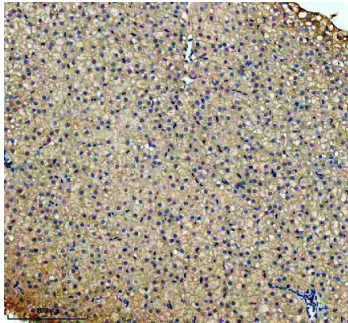
Technical Details

Immunogen	E.coli-derived zebrafish CBS recombinant protein (Position: K113-E353).
Form	Lyophilized
Concentration	Adding 0.2 ml of distilled water will yield a concentration of 500 ug/ml.
Purification	Immunogen affinity purified.
Suggested Dilutions	Western blot, 0.25-0.5 ug/ml, Zebrafish Immunohistochemistry(Paraffin-embedded Section), 2-5 ug/ml, Zebrafish

Anti-Zebrafish CBS Antibody Picoband® (AZA9JT04) Images



Western blot analysis of CBS using anti-CBS antibody (AZA9JT04). Electrophoresis was performed on a 10% SDS-PAGE gel at 80V (Stacking gel) / 120V (Resolving gel) for 2 hours. The sample well of each lane was loaded with 30 ug of sample under reducing conditions. Lane 1: zebrafish head tissue lysates, Lane 2: whole female zebrafish tissue lysates, Lane 3: whole male zebrafish tissue lysates. After electrophoresis, proteins were transferred to a nitrocellulose membrane at 150 mA for 50-90 minutes. Blocked the membrane with 5% non-fat milk/TBS for 1.5 hour at RT. The membrane was incubated with rabbit anti-CBS antigen affinity purified polyclonal antibody (AZA9JT04) at 0.5 ug/mL overnight at 4°C, then washed with TBS-0.1% Tween 3 times with 5 minutes each and probed with a goat anti-rabbit IgG-HRP secondary antibody at a dilution of 1:5000 for 1.5 hour at RT. The signal is developed using an ECL Plus Western Blotting Substrate (Catalog # AR1196-200) with Tanon 5200 system. A specific band was detected for CBS at approximately 40 kDa. The expected band size for CBS is at 61 kDa.



IHC analysis of CBS using anti-CBS antibody (AZA9JT04). CBS was detected in a paraffin-embedded section of zebrafish liver tissue. Heat mediated antigen retrieval was performed in EDTA buffer (pH 8.0, epitope retrieval solution). The tissue section was blocked with 10% goat serum. The tissue section was then incubated with 2 ug/ml rabbit anti-CBS Antibody (AZA9JT04) overnight at 4°C. Peroxidase Conjugated Goat Anti-rabbit IgG was used as secondary antibody and incubated for 30 minutes at 37°C. The tissue section was developed using HRP Conjugated Rabbit IgG Super Vision Assay Kit (Catalog # SV0002) with DAB as the chromogen.

Submit a product review to [Biocompare.com](https://www.biocompare.com)

Submit a review of this product to [Biocompare.com](https://www.biocompare.com) to receive a \$20 Amazon.com giftcard! Your reviews help your fellow scientists make the right decisions. Thank you for your contribution.



Anti-Zebrafish CBS Antibody

For Research Use Only. Not for use in diagnostic procedures.