

Anti-Zebrafish Kinase p110 Beta/PIK3CB Antibody

Catalog Number: AZE7F251

About PIK3CB

Predicted to enable 1-phosphatidylinositol-3-kinase activity and 1-phosphatidylinositol-4-phosphate 3-kinase activity. Predicted to be involved in cell migration; intracellular signal transduction; and phosphatidylinositol-3-phosphate biosynthetic process. Predicted to act upstream of or within phosphatidylinositol phosphate biosynthetic process and phosphorylation. Predicted to be part of phosphatidylinositol 3-kinase complex. Predicted to be active in cytoplasm and plasma membrane. Human ortholog(s) of this gene implicated in glioblastoma; prostate adenocarcinoma; prostate cancer; and type 2 diabetes mellitus. Orthologous to human PIK3CB (phosphatidylinositol-4,5-bisphosphate 3-kinase catalytic subunit beta).

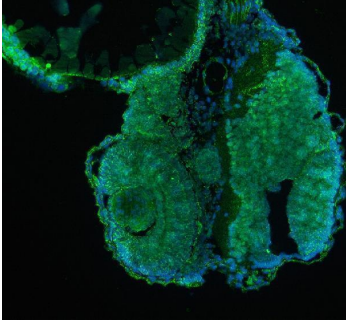
Overview

Product Name	Anti-Zebrafish Kinase p110 Beta/PIK3CB Antibody
Reactive Species	Zebrafish
Description	Boster Bio Anti-Zebrafish Kinase p110 Beta/PIK3CB Antibody catalog # AZE7F251. Tested in IHC, IF applications. This antibody reacts with Zebrafish.
Application	IF, IHC
Clonality	Polyclonal
Formulation	Each vial contains 4 mg Trehalose, 0.9 mg NaCl, 0.2 mg Na ₂ HPO ₄ .
Storage Instructions	At -20°C for one year from date of receipt. After reconstitution, at 4°C for one month. It can also be aliquotted and stored frozen at -20°C for six months. Avoid repeated freezing and thawing.
Host	Rabbit
Uniprot ID	E7F251

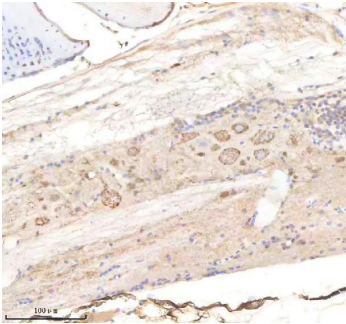
Technical Details

Immunogen	E.coli-derived zebrafish PIK3CB recombinant protein (Position: E562-L611).
Form	Lyophilized
Concentration	Adding 0.2 ml of distilled water will yield a concentration of 500 ug/ml.
Purification	Immunogen affinity purified.
Suggested Dilutions	Immunohistochemistry(Paraffin-embedded Section), 2-5 ug/ml, Zebrafish Immunofluorescence, 5 ug/ml, Zebrafish

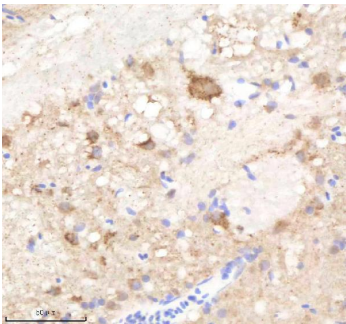
Anti-Zebrafish Kinase p110 Beta/PIK3CB Antibody (AZE7F251) Images



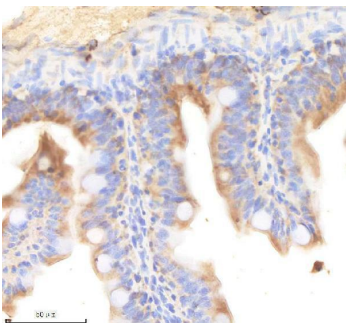
IF analysis of Kinase p110 Beta/PIK3CB using anti-Kinase p110 Beta/PIK3CB antibody (AZE7F251). Kinase p110 Beta/PIK3CB was detected in a paraffin-embedded section of zebrafish embryo tissue. Heat mediated antigen retrieval was performed in EDTA buffer (pH 8.0, epitope retrieval solution). The tissue section was blocked with 10% goat serum. The tissue section was then incubated with 5 ug/mL rabbit anti-Kinase p110 Beta/PIK3CB Antibody (AZE7F251) overnight at 4°C. DyLight®488 Conjugated Goat Anti-Rabbit IgG (BA1127) was used as secondary antibody at 1:500 dilution and incubated for 30 minutes at 37°C. The section was counterstained with DAPI. Visualize using a fluorescence microscope and filter sets appropriate for the label used.



IHC analysis of Kinase p110 Beta/PIK3CB using anti-Kinase p110 Beta/PIK3CB antibody (AZE7F251). Kinase p110 Beta/PIK3CB was detected in a paraffin-embedded section of zebrafish spinal cord tissue. Heat mediated antigen retrieval was performed in EDTA buffer (pH 8.0, epitope retrieval solution). The tissue section was blocked with 10% goat serum. The tissue section was then incubated with 2 ug/ml rabbit anti-Kinase p110 Beta/PIK3CB Antibody (AZE7F251) overnight at 4°C. Peroxidase Conjugated Goat Anti-rabbit IgG was used as secondary antibody and incubated for 30 minutes at 37°C. The tissue section was developed using HRP Conjugated Rabbit IgG Super Vision Assay Kit (Catalog # SV0002) with DAB as the chromogen.

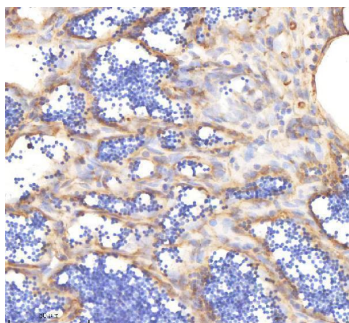


IHC analysis of Kinase p110 Beta/PIK3CB using anti-Kinase p110 Beta/PIK3CB antibody (AZE7F251). Kinase p110 Beta/PIK3CB was detected in a paraffin-embedded section of zebrafish brain tissue. Heat mediated antigen retrieval was performed in EDTA buffer (pH 8.0, epitope retrieval solution). The tissue section was blocked with 10% goat serum. The tissue section was then incubated with 2 ug/ml rabbit anti-Kinase p110 Beta/PIK3CB Antibody (AZE7F251) overnight at 4°C. Peroxidase Conjugated Goat Anti-rabbit IgG was used as secondary antibody and incubated for 30 minutes at 37°C. The tissue section was developed using HRP Conjugated Rabbit IgG Super Vision Assay Kit (Catalog # SV0002) with DAB as the chromogen.

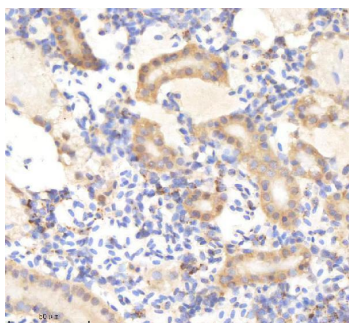


IHC analysis of Kinase p110 Beta/PIK3CB using anti-Kinase p110 Beta/PIK3CB antibody (AZE7F251). Kinase p110 Beta/PIK3CB was detected in a paraffin-embedded section of zebrafish colon tissue. Heat mediated antigen retrieval was performed in EDTA buffer (pH 8.0, epitope retrieval solution). The tissue section was blocked with 10% goat serum. The tissue section was then incubated with 2 ug/ml rabbit anti-Kinase p110 Beta/PIK3CB Antibody (AZE7F251) overnight at 4°C. Peroxidase Conjugated Goat Anti-rabbit IgG was used as secondary antibody and incubated for 30

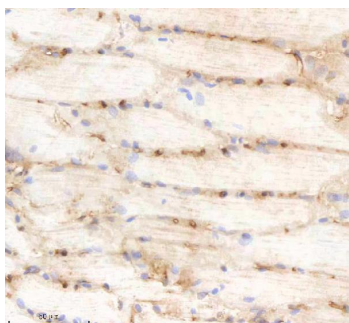
minutes at 37°C. The tissue section was developed using HRP Conjugated Rabbit IgG Super Vision Assay Kit (Catalog # SV0002) with DAB as the chromogen.



IHC analysis of Kinase p110 Beta/PIK3CB using anti-Kinase p110 Beta/PIK3CB antibody (AZE7F251). Kinase p110 Beta/PIK3CB was detected in a paraffin-embedded section of zebrafish testis tissue. Heat mediated antigen retrieval was performed in EDTA buffer (pH 8.0, epitope retrieval solution). The tissue section was blocked with 10% goat serum. The tissue section was then incubated with 2 ug/ml rabbit anti-Kinase p110 Beta/PIK3CB Antibody (AZE7F251) overnight at 4°C. Peroxidase Conjugated Goat Anti-rabbit IgG was used as secondary antibody and incubated for 30 minutes at 37°C. The tissue section was developed using HRP Conjugated Rabbit IgG Super Vision Assay Kit (Catalog # SV0002) with DAB as the chromogen.



IHC analysis of Kinase p110 Beta/PIK3CB using anti-Kinase p110 Beta/PIK3CB antibody (AZE7F251). Kinase p110 Beta/PIK3CB was detected in a paraffin-embedded section of zebrafish kidney tissue. Heat mediated antigen retrieval was performed in EDTA buffer (pH 8.0, epitope retrieval solution). The tissue section was blocked with 10% goat serum. The tissue section was then incubated with 2 ug/ml rabbit anti-Kinase p110 Beta/PIK3CB Antibody (AZE7F251) overnight at 4°C. Peroxidase Conjugated Goat Anti-rabbit IgG was used as secondary antibody and incubated for 30 minutes at 37°C. The tissue section was developed using HRP Conjugated Rabbit IgG Super Vision Assay Kit (Catalog # SV0002) with DAB as the chromogen.



IHC analysis of Kinase p110 Beta/PIK3CB using anti-Kinase p110 Beta/PIK3CB antibody (AZE7F251). Kinase p110 Beta/PIK3CB was detected in a paraffin-embedded section of zebrafish muscle tissue. Heat mediated antigen retrieval was performed in EDTA buffer (pH 8.0, epitope retrieval solution). The tissue section was blocked with 10% goat serum. The tissue section was then incubated with 2 ug/ml rabbit anti-Kinase p110 Beta/PIK3CB Antibody (AZE7F251) overnight at 4°C. Peroxidase Conjugated Goat Anti-rabbit IgG was used as secondary antibody and incubated for 30 minutes at 37°C. The tissue section was developed using HRP Conjugated Rabbit IgG Super Vision Assay Kit (Catalog # SV0002) with DAB as the chromogen.

Submit a product review to Biocompare.com

Submit a review of this product to Biocompare.com to receive a \$20 Amazon.com giftcard! Your reviews help your fellow scientists make the right decisions. Thank you for your contribution.



Anti-Zebrafish Kinase p110 Beta/PIK3CB Antibody

For Research Use Only. Not for use in diagnostic procedures.