

Anti-Zebrafish PBEF/NAMPT Antibody

Catalog Number: AZE7F8T6

About NAMPT

Nicotinamide phosphoribosyltransferase (NAMPTase or Nampt), also known as pre-B-cell colony-enhancing factor 1 (PBEF1) or visfatin, is an enzyme that in humans is encoded by the PBEF1 gene. This gene encodes a protein that catalyzes the condensation of nicotinamide with 5-phosphoribosyl-1-pyrophosphate to yield nicotinamide mononucleotide, one step in the biosynthesis of nicotinamide adenine dinucleotide. The protein belongs to the nicotinic acid phosphoribosyltransferase (NAPRTase) family and is thought to be involved in many important biological processes, including metabolism, stress response and aging. This gene has a pseudogene on chromosome 10.

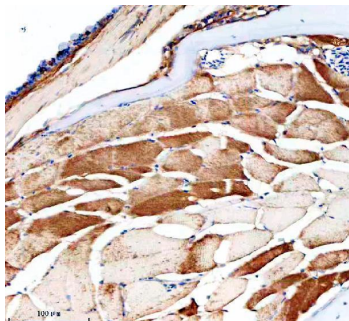
Overview

Product Name	Anti-Zebrafish PBEF/NAMPT Antibody
Reactive Species	Zebrafish
Description	Boster Bio Anti-Zebrafish PBEF/NAMPT Antibody catalog # AZE7F8T6. Tested in IHC applications. This antibody reacts with Zebrafish.
Application	IHC
Clonality	Polyclonal
Formulation	Each vial contains 4 mg Trehalose, 0.9 mg NaCl, 0.2 mg Na ₂ HPO ₄ .
Storage Instructions	At -20°C for one year from date of receipt. After reconstitution, at 4°C for one month. It can also be aliquotted and stored frozen at -20°C for six months. Avoid repeated freezing and thawing.
Host	Rabbit
Uniprot ID	E7F8T6

Technical Details

Immunogen	E.coli-derived zebrafish PBEF/NAMPT recombinant protein (Position: G62-N338).
Form	Lyophilized
Concentration	Adding 0.2 ml of distilled water will yield a concentration of 500 ug/ml.
Purification	Immunogen affinity purified.
Suggested Dilutions	Immunohistochemistry(Paraffin-embedded Section), 2-5 ug/ml, Zebrafish

Anti-Zebrafish PBEF/NAMPT Antibody (AZE7F8T6) Images



IHC analysis of PBEF/NAMPT using anti-PBEF/NAMPT antibody (AZE7F8T6). PBEF/NAMPT was detected in a paraffin-embedded section of zebrafish skeletal muscle tissue. Heat mediated antigen retrieval was performed in EDTA buffer (pH 8.0, epitope retrieval solution). The tissue section was blocked with 10% goat serum. The tissue section was then incubated with 2 ug/ml rabbit anti-PBEF/NAMPT Antibody (AZE7F8T6) overnight at 4°C. Peroxidase Conjugated Goat Anti-rabbit IgG was used as secondary antibody and incubated for 30 minutes at 37°C. The tissue section was developed using HRP Conjugated Rabbit IgG Super Vision Assay Kit (Catalog # SV0002) with DAB as the chromogen.

Submit a product review to Biocompare.com

Submit a review of this product to Biocompare.com to receive a \$20 Amazon.com giftcard! Your reviews help your fellow scientists make the right decisions. Thank you for your contribution.



Anti-Zebrafish PBEF/NAMPT Antibody

For Research Use Only. Not for use in diagnostic procedures.