

## Anti-Zebrafish beta I Tubulin/TUBB1 Antibody Picoband®

Catalog Number: AZE7FC32

### About TUBB1

Predicted to enable GTP binding activity. Predicted to be a structural constituent of cytoskeleton. Predicted to be involved in microtubule cytoskeleton organization and mitotic cell cycle. Predicted to be located in cytoskeleton. Predicted to be active in cytoplasm and microtubule. Human ortholog(s) of this gene implicated in autosomal dominant isolated macrothrombocytopenia 1. Orthologous to human TUBB1 (tubulin beta 1 class VI).

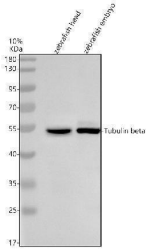
### Overview

Product Name	Anti-Zebrafish beta I Tubulin/TUBB1 Antibody Picoband®
Reactive Species	Zebrafish
Description	Boster Bio Anti-Zebrafish beta I Tubulin/TUBB1 Antibody Picoband® catalog # AZE7FC32. Tested in WB applications. This antibody reacts with Zebrafish. The brand Picoband indicates this is a premium antibody that guarantees superior quality, high affinity, and strong signals with minimal background in Western blot applications. Only our best-performing antibodies are designated as Picoband, ensuring unmatched performance.
Application	WB
Clonality	Polyclonal
Formulation	Each vial contains 4 mg Trehalose, 0.9 mg NaCl, 0.2 mg Na <sub>2</sub> HPO <sub>4</sub> .
Storage Instructions	At -20°C for one year from date of receipt. After reconstitution, at 4°C for one month. It can also be aliquotted and stored frozen at -20°C for six months. Avoid repeated freezing and thawing.
Host	Rabbit
Uniprot ID	E7FC32

### Technical Details

Immunogen	E.coli-derived Zebrafish beta I Tubulin/TUBB1 recombinant protein (Position: M1-D427).
Form	Lyophilized
Concentration	Adding 0.2 ml of distilled water will yield a concentration of 500 ug/ml.
Purification	Immunogen affinity purified.
Suggested Dilutions	Western blot, 0.25-0.5 ug/ml, Zebrafish

## Anti-Zebrafish beta I Tubulin/TUBB1 Antibody Picoband® (AZE7FC32) Images



Western blot analysis of beta I Tubulin/TUBB1 using anti-beta I Tubulin/TUBB1 antibody (AZE7FC32). Electrophoresis was performed on a 10% SDS-PAGE gel at 80V (Stacking gel) / 120V (Resolving gel) for 2 hours. The sample well of each lane was loaded with 30 ug of sample under reducing conditions. Lane 1: zebrafish head tissue lysates, Lane 2: zebrafish embryo tissue lysates. After electrophoresis, proteins were transferred to a nitrocellulose membrane at 150 mA for 50-90 minutes. Blocked the membrane with 5% non-fat milk/TBS for 1.5 hour at RT. The membrane was incubated with rabbit anti-beta I Tubulin/TUBB1 antigen affinity purified polyclonal antibody (AZE7FC32) at 0.5 ug/mL overnight at 4°C, then washed with TBS-0.1% Tween 3 times with 5 minutes each and probed with a goat anti-rabbit IgG-HRP secondary antibody at a dilution of 1:5000 for 1.5 hour at RT. The signal is developed using an ECL Plus Western Blotting Substrate (Catalog # AR1196-200) with Tanon 5200 system. A specific band was detected for beta I Tubulin/TUBB1 at approximately 50 kDa. The expected band size for beta I Tubulin/TUBB1 is at 50 kDa.

### Submit a product review to Biocompare.com

Submit a review of this product to Biocompare.com to receive a \$20 Amazon.com giftcard! Your reviews help your fellow scientists make the right decisions. Thank you for your contribution.



### Anti-Zebrafish beta I Tubulin/TUBB1 Antibody

For Research Use Only. Not for use in diagnostic procedures.