

Anti-Zebrafish SYN2A Antibody Picoband®

Catalog Number: AZF1R0A8

About SYN2A

Predicted to enable ATP binding activity. Predicted to be involved in synapse organization and synaptic vesicle clustering. Predicted to act upstream of or within neurotransmitter secretion. Predicted to be located in synaptic vesicle. Predicted to be active in synaptic vesicle membrane. Is expressed in DEL; nervous system; spinal cord neural tube; and yolk syncytial layer. Human ortholog(s) of this gene implicated in schizophrenia. Orthologous to human SYN2 (synapsin II).

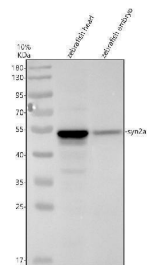
Overview

Product Name	Anti-Zebrafish SYN2A Antibody Picoband®
Reactive Species	Zebrafish
Description	Boster Bio Anti-Zebrafish SYN2A Antibody Picoband® catalog # AZF1R0A8. Tested in WB, IHC applications. This antibody reacts with Zebrafish. The brand Picoband indicates this is a premium antibody that guarantees superior quality, high affinity, and strong signals with minimal background in Western blot applications. Only our best-performing antibodies are designated as Picoband, ensuring unmatched performance.
Application	IHC, WB
Clonality	Polyclonal
Formulation	Each vial contains 4 mg Trehalose, 0.9 mg NaCl, 0.2 mg Na ₂ HPO ₄ .
Storage Instructions	At -20°C for one year from date of receipt. After reconstitution, at 4°C for one month. It can also be aliquotted and stored frozen at -20°C for six months. Avoid repeated freezing and thawing.
Host	Rabbit
Uniprot ID	F1R0A8

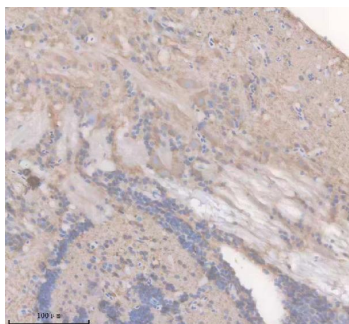
Technical Details

Immunogen	E.coli-derived Zebrafish SYN2A recombinant protein (Position: D107-N463).
Form	Lyophilized
Concentration	Adding 0.2 ml of distilled water will yield a concentration of 500 ug/ml.
Purification	Immunogen affinity purified.
Suggested Dilutions	Western blot, 0.25-0.5 ug/ml, Zebrafish Immunohistochemistry(Paraffin-embedded Section), 2-5 ug/ml, Zebrafish

Anti-Zebrafish SYN2A Antibody Picoband® (AZF1R0A8) Images



Western blot analysis of SYN2A using anti-SYN2A antibody (AZF1R0A8). Electrophoresis was performed on a 10% SDS-PAGE gel at 80V (Stacking gel) / 120V (Resolving gel) for 2 hours. The sample well of each lane was loaded with 30 ug of sample under reducing conditions. Lane 1: zebrafish head tissue lysates, Lane 2: zebrafish embryo tissue lysates. After electrophoresis, proteins were transferred to a nitrocellulose membrane at 150 mA for 50-90 minutes. Blocked the membrane with 5% non-fat milk/TBS for 1.5 hour at RT. The membrane was incubated with rabbit anti-SYN2A antigen affinity purified polyclonal antibody (AZF1R0A8) at 0.5 ug/mL overnight at 4°C, then washed with TBS-0.1% Tween 3 times with 5 minutes each and probed with a goat anti-rabbit IgG-HRP secondary antibody at a dilution of 1:5000 for 1.5 hour at RT. The signal is developed using an ECL Plus Western Blotting Substrate (Catalog # AR1196-200) with Tanon 5200 system. A specific band was detected for SYN2A at approximately 51 kDa. The expected band size for SYN2A is at 51 kDa.



IHC analysis of SYN2A using anti-SYN2A antibody (AZF1R0A8). SYN2A was detected in a paraffin-embedded section of zebrafish brain tissue. Heat mediated antigen retrieval was performed in EDTA buffer (pH 8.0, epitope retrieval solution). The tissue section was blocked with 10% goat serum. The tissue section was then incubated with 2 ug/ml rabbit anti-SYN2A Antibody (AZF1R0A8) overnight at 4°C. Peroxidase Conjugated Goat Anti-rabbit IgG was used as secondary antibody and incubated for 30 minutes at 37°C. The tissue section was developed using HRP Conjugated Rabbit IgG Super Vision Assay Kit (Catalog # SV0002) with DAB as the chromogen.

Submit a product review to [Biocompare.com](https://www.biocompare.com)

Submit a review of this product to [Biocompare.com](https://www.biocompare.com) to receive a \$20 Amazon.com giftcard! Your reviews help your fellow scientists make the right decisions. Thank you for your contribution.



Anti-Zebrafish SYN2A Antibody

For Research Use Only. Not for use in diagnostic procedures.