

Anti-Zebrafish C1QBP Antibody Picoband®

Catalog Number: AZF1R3F7

About C1QBP

Complement component 1 Q subcomponent-binding protein, mitochondrial is a protein that in humans is encoded by the C1QBP gene. This gene is mapped to 17p13.3 in a region conserved with mouse chromosome 11. The human complement subcomponent C1q associates with C1r and C1s in order to yield the first component of the serum complement system. The protein encoded by this gene is known to bind to the globular heads of C1q molecules and inhibit C1 activation. This protein has also been identified as the p32 subunit of pre-mRNA splicing factor SF2, as well as a hyaluronic acid-binding protein.

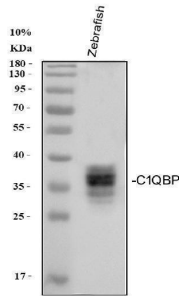
Overview

| | |
|----------------------|--|
| Product Name | Anti-Zebrafish C1QBP Antibody Picoband® |
| Reactive Species | Zebrafish |
| Application | WB |
| Clonality | Polyclonal |
| Formulation | Each vial contains 4 mg Trehalose, 0.9 mg NaCl, 0.2 mg Na ₂ HPO ₄ . |
| Storage Instructions | At -20 °C for one year from date of receipt. After reconstitution, at 4 °C for one month. It can also be aliquotted and stored frozen at -20 °C for six months. Avoid repeated freezing and thawing. |
| Host | Rabbit |
| Uniprot ID | F1R3F7 |

Technical Details

| | |
|-------------------------------|---|
| Immunogen | E.coli-derived zebrafish C1QBP recombinant protein (Position: N215-K270). |
| Recommended Detection Systems | Boster recommends Enhanced Chemiluminescent Kit with anti-Rabbit IgG (EK1002) for Western blot. |
| Form | Lyophilized |
| Concentration | Adding 0.2 ml of distilled water will yield a concentration of 500 ug/ml. |
| Purification | Immunogen affinity purified. |
| Suggested Dilutions | Western blot, 0.25-0.5 ug/ml, Zebrafish |

Anti-Zebrafish C1QBP Antibody Picoband® (AZF1R3F7) Images



Western blot analysis of Zebrafish C1QBP using anti-Zebrafish C1QBP antibody (AZF1R3F7). Electrophoresis was performed on a 10% SDS-PAGE gel at 70V (Stacking gel) / 90V (Resolving gel) for 2-3 hours. The sample well of each lane was loaded with 30 ug of sample under reducing conditions. Lane 1: Zebrafish tissue lysates. After electrophoresis, proteins were transferred to a nitrocellulose membrane at 150 mA for 50-90 minutes. Blocked the membrane with 5% non-fat milk/TBS for 1.5 hour at RT. The membrane was incubated with rabbit anti-Zebrafish C1QBP antigen affinity purified polyclonal antibody (AZF1R3F7) at 0.5 ug/mL overnight at 4°C, then washed with TBS-0.1%Tween 3 times with 5 minutes each and probed with a goat anti-rabbit IgG-HRP secondary antibody at a dilution of 1:5000 for 1.5 hour at RT. The signal is developed using an Enhanced Chemiluminescent detection (ECL) kit (Catalog # EK1002) with Tanon 5200 system. A specific band was detected for Zebrafish C1QBP at approximately 35 kDa. The expected band size for Zebrafish C1QBP is at 30 kDa.

Submit a product review to [Biocompare.com](https://www.biocompare.com)

Submit a review of this product to [Biocompare.com](https://www.biocompare.com) to receive a \$20 Amazon.com giftcard! Your reviews help your fellow scientists make the right decisions. Thank you for your contribution.



Anti-Zebrafish C1QBP Antibody

For Research Use Only. Not for use in diagnostic procedures.