

Anti-Zebrafish LAMA2 Antibody Picoband®

Catalog Number: AZG8IHU0

About LAMA2

Predicted to be an extracellular matrix structural constituent. Acts upstream of or within muscle attachment and myelination in peripheral nervous system. Predicted to be located in extracellular region. Predicted to be active in basement membrane. Is expressed in several structures, including adaxial cell; central nervous system; eye; musculature system; and otic vesicle. Used to study congenital merosin-deficient muscular dystrophy 1A and muscular dystrophy. Human ortholog(s) of this gene implicated in autosomal recessive limb-girdle muscular dystrophy; congenital merosin-deficient muscular dystrophy 1A; muscular dystrophy; and myopia. Orthologous to human LAMA2 (laminin subunit alpha 2).

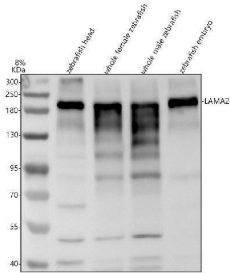
Overview

Product Name	Anti-Zebrafish LAMA2 Antibody Picoband®
Reactive Species	Zebrafish
Description	Boster Bio Anti-Zebrafish LAMA2 Antibody Picoband® catalog # AZG8IHU0. Tested in WB applications. This antibody reacts with Zebrafish. The brand Picoband indicates this is a premium antibody that guarantees superior quality, high affinity, and strong signals with minimal background in Western blot applications. Only our best-performing antibodies are designated as Picoband, ensuring unmatched performance.
Application	WB
Clonality	Polyclonal
Formulation	Each vial contains 4 mg Trehalose, 0.9 mg NaCl, 0.2 mg Na ₂ HPO ₄ .
Storage Instructions	At -20°C for one year from date of receipt. After reconstitution, at 4°C for one month. It can also be aliquotted and stored frozen at -20°C for six months. Avoid repeated freezing and thawing.
Host	Rabbit
Uniprot ID	G8IHU0

Technical Details

Immunogen	E.coli-derived Zebrafish LAMA2 recombinant protein (Position: D1895-D2784).
Form	Lyophilized
Concentration	Adding 0.2 ml of distilled water will yield a concentration of 500 ug/ml.
Purification	Immunogen affinity purified.
Suggested Dilutions	Western blot, 0.25-0.5 ug/ml, Zebrafish

Anti-Zebrafish LAMA2 Antibody Picoband® (AZG8IHU0) Images



Western blot analysis of LAMA2 using anti-LAMA2 antibody (AZG8IHU0). Electrophoresis was performed on a 8% SDS-PAGE gel at 80V (Stacking gel) / 120V (Resolving gel) for 2 hours. The sample well of each lane was loaded with 30 ug of sample under reducing conditions. Lane 1: zebrafish head tissue lysates, Lane 2: whole female zebrafish tissue lysates, Lane 3: whole male zebrafish tissue lysates, Lane 4: zebrafish embryo tissue lysates. After electrophoresis, proteins were transferred to a nitrocellulose membrane at 150 mA for 50-90 minutes. Blocked the membrane with 5% non-fat milk/TBS for 1.5 hour at RT. The membrane was incubated with rabbit anti-LAMA2 antigen affinity purified polyclonal antibody (AZG8IHU0) at 0.5 ug/mL overnight at 4°C, then washed with TBS-0.1%Tween 3 times with 5 minutes each and probed with a goat anti-rabbit IgG-HRP secondary antibody at a dilution of 1:5000 for 1.5 hour at RT. The signal is developed using an ECL Plus Western Blotting Substrate (Catalog # AR1196-200) with Tanon 5200 system. A specific band was detected for LAMA2 at approximately 200 kDa. The expected band size for LAMA2 is at 338 kDa.

Submit a product review to Biocompare.com

Submit a review of this product to Biocompare.com to receive a \$20 Amazon.com giftcard! Your reviews help your fellow scientists make the right decisions. Thank you for your contribution.



Anti-Zebrafish LAMA2 Antibody

For Research Use Only. Not for use in diagnostic procedures.