

Anti-Zebrafish DLB Antibody Picoband®

Catalog Number: AZO57409

About DLB

Predicted to enable Notch binding activity. Acts upstream of or within diencephalon development and midbrain development. Predicted to be located in membrane. Predicted to be active in plasma membrane. Is expressed in several structures, including adenohypophyseal placode; digestive system; ectoderm; nervous system; and neural plate. Human ortholog(s) of this gene implicated in dysostosis and spondylocostal dysostosis 1. Orthologous to human DLL3 (delta like canonical Notch ligand 3).

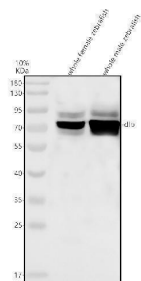
Overview

Product Name	Anti-Zebrafish DLB Antibody Picoband®
Reactive Species	Zebrafish
Description	Boster Bio Anti-Zebrafish DLB Antibody Picoband® catalog # AZO57409. Tested in WB applications. This antibody reacts with Zebrafish. The brand Picoband indicates this is a premium antibody that guarantees superior quality, high affinity, and strong signals with minimal background in Western blot applications. Only our best-performing antibodies are designated as Picoband, ensuring unmatched performance.
Application	WB
Clonality	Polyclonal
Formulation	Each vial contains 4 mg Trehalose, 0.9 mg NaCl, 0.2 mg Na ₂ HPO ₄ .
Storage Instructions	At -20°C for one year from date of receipt. After reconstitution, at 4°C for one month. It can also be aliquotted and stored frozen at -20°C for six months. Avoid repeated freezing and thawing.
Host	Rabbit
Uniprot ID	O57409

Technical Details

Immunogen	E.coli-derived Zebrafish DLB recombinant protein (Position: Q16-E605).
Form	Lyophilized
Concentration	Adding 0.2 ml of distilled water will yield a concentration of 500 ug/ml.
Purification	Immunogen affinity purified.
Suggested Dilutions	Western blot, 0.25-0.5 ug/ml, Zebrafish

Anti-Zebrafish DLB Antibody Picoband® (AZO57409) Images



Western blot analysis of DLB using anti-DLB antibody (AZO57409). Electrophoresis was performed on a 10% SDS-PAGE gel at 80V (Stacking gel) / 120V (Resolving gel) for 2 hours. The sample well of each lane was loaded with 30 ug of sample under reducing conditions. Lane 1: whole female zebrafish tissue lysates, Lane 2: whole male zebrafish tissue lysates. After electrophoresis, proteins were transferred to a nitrocellulose membrane at 150 mA for 50-90 minutes. Blocked the membrane with 5% non-fat milk/TBS for 1.5 hour at RT. The membrane was incubated with rabbit anti-DLB antigen affinity purified polyclonal antibody (AZO57409) at 0.5 ug/mL overnight at 4°C, then washed with TBS-0.1% Tween 3 times with 5 minutes each and probed with a goat anti-rabbit IgG-HRP secondary antibody at a dilution of 1:5000 for 1.5 hour at RT. The signal is developed using an ECL Plus Western Blotting Substrate (Catalog # AR1196-200) with Tanon 5200 system. A specific band was detected for DLB at approximately 67 kDa. The expected band size for DLB is at 67 kDa.

Submit a product review to Biocompare.com

Submit a review of this product to Biocompare.com to receive a \$20 Amazon.com giftcard! Your reviews help your fellow scientists make the right decisions. Thank you for your contribution.



Anti-Zebrafish DLB Antibody

For Research Use Only. Not for use in diagnostic procedures.