

Anti-Zebrafish ACVR1L Antibody

Catalog Number: AZO73736

About ACVR1L

Predicted to enable ATP binding activity; SMAD binding activity; and transforming growth factor beta receptor activity, type I. Acts upstream of or within several processes, including circulatory system development; determination of bilateral symmetry; and embryonic morphogenesis. Located in cell cortex and plasma membrane. Part of BMP receptor complex. Is expressed in brain; ceratobranchial 5 tooth; immature eye; liver; and tooth placode. Human ortholog(s) of this gene implicated in exfoliation syndrome; fibrodysplasia ossificans progressiva; primary angle-closure glaucoma; and primary open angle glaucoma. Orthologous to human ACVR1 (activin A receptor type 1).

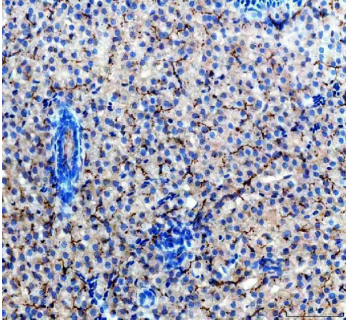
Overview

| | |
|----------------------|---|
| Product Name | Anti-Zebrafish ACVR1L Antibody |
| Reactive Species | Zebrafish |
| Description | Boster Bio Anti-Zebrafish ACVR1L Antibody catalog # AZO73736. Tested in IHC applications. This antibody reacts with Zebrafish. |
| Application | IHC |
| Clonality | Polyclonal |
| Formulation | Each vial contains 4 mg Trehalose, 0.9 mg NaCl, 0.2 mg Na ₂ HPO ₄ . |
| Storage Instructions | At -20°C for one year from date of receipt. After reconstitution, at 4°C for one month. It can also be aliquotted and stored frozen at -20°C for six months. Avoid repeated freezing and thawing. |
| Host | Rabbit |
| Uniprot ID | O73736 |

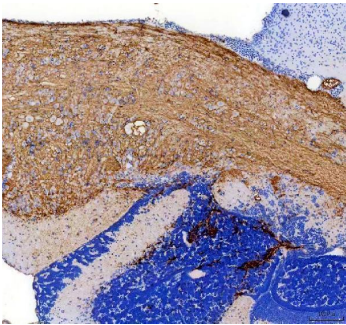
Technical Details

| | |
|---------------------|---|
| Immunogen | E.coli-derived Zebrafish ACVR1L recombinant protein (Position: M1-C506). |
| Form | Lyophilized |
| Concentration | Adding 0.2 ml of distilled water will yield a concentration of 500 ug/ml. |
| Purification | Immunogen affinity purified. |
| Suggested Dilutions | Immunohistochemistry(Paraffin-embedded Section), 2-5 ug/ml, Zebrafish |

Anti-Zebrafish ACVR1L Antibody (AZO73736) Images



IHC analysis of ACVR1L using anti-ACVR1L antibody (AZO73736). ACVR1L was detected in a paraffin-embedded section of zebrafish liver tissue. Heat mediated antigen retrieval was performed in EDTA buffer (pH 8.0, epitope retrieval solution). The tissue section was blocked with 10% goat serum. The tissue section was then incubated with 2 ug/ml rabbit anti-ACVR1L Antibody (AZO73736) overnight at 4°C. Peroxidase Conjugated Goat Anti-rabbit IgG was used as secondary antibody and incubated for 30 minutes at 37°C. The tissue section was developed using HRP Conjugated Rabbit IgG Super Vision Assay Kit (Catalog # SV0002) with DAB as the chromogen.



IHC analysis of ACVR1L using anti-ACVR1L antibody (AZO73736). ACVR1L was detected in a paraffin-embedded section of zebrafish brain tissue. Heat mediated antigen retrieval was performed in EDTA buffer (pH 8.0, epitope retrieval solution). The tissue section was blocked with 10% goat serum. The tissue section was then incubated with 2 ug/ml rabbit anti-ACVR1L Antibody (AZO73736) overnight at 4°C. Peroxidase Conjugated Goat Anti-rabbit IgG was used as secondary antibody and incubated for 30 minutes at 37°C. The tissue section was developed using HRP Conjugated Rabbit IgG Super Vision Assay Kit (Catalog # SV0002) with DAB as the chromogen.

Submit a product review to [Biocompare.com](https://www.biocompare.com)

Submit a review of this product to [Biocompare.com](https://www.biocompare.com) to receive a \$20 Amazon.com giftcard! Your reviews help your fellow scientists make the right decisions. Thank you for your contribution.



Anti-Zebrafish ACVR1L Antibody

For Research Use Only. Not for use in diagnostic procedures.