

Anti-Zebrafish LZIC Antibody

Catalog Number: AZQ6DHH7

About LZIC

LZIC is closely related to ICAT, a physiological inhibitor of the Wnt pathway that interacts physically and functionally with beta-catenin to prevent the transcription of Wnt target genes. LZIC's ICAT-homologous region is highly similar to ICAT with particular conservation of residues that are used by ICAT for beta-catenin-binding. LZIC does not interact with beta-catenin in vitro or in vivo. LZIC is a protein conserved in vertebrates, is required for neuronal survival.

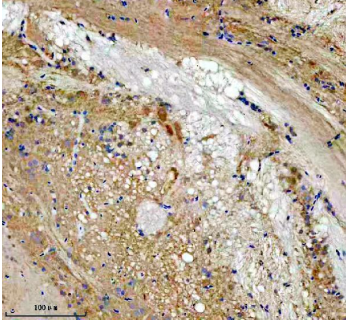
Overview

Product Name	Anti-Zebrafish LZIC Antibody
Reactive Species	Zebrafish
Description	Boster Bio Anti-Zebrafish LZIC Antibody catalog #AZQ6DHH7. Tested in IHC applications. This antibody reacts with Zebrafish.
Application	IHC
Clonality	Polyclonal
Formulation	Each vial contains 4 mg Trehalose, 0.9 mg NaCl, 0.2 mg Na ₂ HPO ₄ .
Storage Instructions	At -20°C for one year from date of receipt. After reconstitution, at 4°C for one month. It can also be aliquotted and stored frozen at -20°C for six months. Avoid repeated freezing and thawing.
Host	Rabbit
Uniprot ID	Q6DHH7

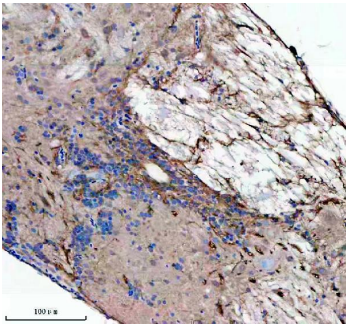
Technical Details

Immunogen	E.coli-derived zebrafish LZIC recombinant protein (Position: N67-K187)
Form	Lyophilized
Concentration	Adding 0.2 ml of distilled water will yield a concentration of 500 ug/ml.
Purification	Immunogen affinity purified.
Suggested Dilutions	Immunohistochemistry (Paraffin-embedded Section), 2-5 ug/ml, Zebrafish

Anti-Zebrafish LZIC Antibody (AZQ6DHH7) Images



IHC analysis of LZIC using anti-LZIC antibody (AZQ6DHH7). LZIC was detected in a paraffin-embedded section of zebrafish brain tissue. Heat mediated antigen retrieval was performed in EDTA buffer (pH 8.0, epitope retrieval solution). The tissue section was blocked with 10% goat serum. The tissue section was then incubated with 2 ug/ml rabbit anti-LZIC Antibody (AZQ6DHH7) overnight at 4°C. Peroxidase Conjugated Goat Anti-rabbit IgG was used as secondary antibody and incubated for 30 minutes at 37°C. The tissue section was developed using HRP Conjugated Rabbit IgG Super Vision Assay Kit (Catalog # SV0002) with DAB as the chromogen.



IHC analysis of LZIC using anti-LZIC antibody (AZQ6DHH7). LZIC was detected in a paraffin-embedded section of spinal cord tissue. Heat mediated antigen retrieval was performed in EDTA buffer (pH 8.0, epitope retrieval solution). The tissue section was blocked with 10% goat serum. The tissue section was then incubated with 2 ug/ml rabbit anti-LZIC Antibody (AZQ6DHH7) overnight at 4°C. Peroxidase Conjugated Goat Anti-rabbit IgG was used as secondary antibody and incubated for 30 minutes at 37°C. The tissue section was developed using HRP Conjugated Rabbit IgG Super Vision Assay Kit (Catalog # SV0002) with DAB as the chromogen.

Submit a product review to [Biocompare.com](https://www.biocompare.com)

Submit a review of this product to [Biocompare.com](https://www.biocompare.com) to receive a \$20 Amazon.com giftcard! Your reviews help your fellow scientists make the right decisions. Thank you for your contribution.



Anti-Zebrafish LZIC Antibody

For Research Use Only. Not for use in diagnostic procedures.