

## Anti-Zebrafish CCT5 Antibody Picoband®

Catalog Number: AZQ6NVI6

### About CCT5

CCT5 is a molecular chaperone that is a member of the chaperonin containing TCP1 complex (CCT), also known as the TCP1 ring complex (TRiC). This complex consists of two identical stacked rings, each containing eight different proteins. Unfolded polypeptides enter the central cavity of the complex and are folded in an ATP-dependent manner. The complex folds various proteins, including actin and tubulin. Mutations in this gene cause hereditary sensory and autonomic neuropathy with spastic paraplegia (HSNSP). Alternative splicing results in multiple transcript variants. Related pseudogenes have been identified on chromosomes 5 and 13.

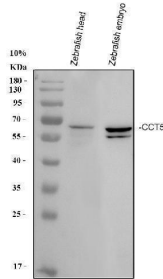
### Overview

Product Name	Anti-Zebrafish CCT5 Antibody Picoband®
Reactive Species	Zebrafish
Application	WB
Clonality	Polyclonal
Formulation	Each vial contains 4 mg Trehalose, 0.9 mg NaCl, 0.2 mg Na <sub>2</sub> HPO <sub>4</sub> .
Storage Instructions	At -20 °C for one year from date of receipt. After reconstitution, at 4 °C for one month. It can also be aliquotted and stored frozen at -20 °C for six months. Avoid repeated freezing and thawing.
Host	Rabbit
Uniprot ID	Q6NVI6

### Technical Details

Immunogen	E.coli-derived zebrafish CCT5 recombinant protein (Position: S442-D541).
Recommended Detection Systems	Boster recommends Enhanced Chemiluminescent Kit with anti-Rabbit IgG (EK1002) for Western blot.
Form	Lyophilized
Concentration	Adding 0.2 ml of distilled water will yield a concentration of 500 ug/ml.
Purification	Immunogen affinity purified.
Suggested Dilutions	Western blot, 0.25-0.5 ug/ml, Zebrafish

## Anti-Zebrafish CCT5 Antibody Picoband® (AZQ6NVI6) Images



Western blot analysis of Zebrafish CCT5 using anti-Zebrafish CCT5 antibody (AZQ6NVI6). Electrophoresis was performed on a 10% SDS-PAGE gel at 70V (Stacking gel) / 90V (Resolving gel) for 2-3 hours. The sample well of each lane was loaded with 30 ug of sample under reducing conditions. Lane 1: Zebrafish head tissue lysates, Lane 2: Zebrafish embryo tissue lysates. After electrophoresis, proteins were transferred to a nitrocellulose membrane at 150 mA for 50-90 minutes. Blocked the membrane with 5% non-fat milk/TBS for 1.5 hour at RT. The membrane was incubated with rabbit anti-Zebrafish CCT5 antigen affinity purified polyclonal antibody (AZQ6NVI6) at 0.5 ug/mL overnight at 4°C, then washed with TBS-0.1%Tween 3 times with 5 minutes each and probed with a goat anti-rabbit IgG-HRP secondary antibody at a dilution of 1:5000 for 1.5 hour at RT. The signal is developed using an Enhanced Chemiluminescent detection (ECL) kit (Catalog # EK1002) with Tanon 5200 system. A specific band was detected for Zebrafish CCT5 at approximately 59 kDa. The expected band size for Zebrafish CCT5 is at 59 kDa.

### Submit a product review to [Biocompare.com](https://www.biocompare.com)

Submit a review of this product to [Biocompare.com](https://www.biocompare.com) to receive a \$20 Amazon.com giftcard! Your reviews help your fellow scientists make the right decisions. Thank you for your contribution.



### Anti-Zebrafish CCT5 Antibody

For Research Use Only. Not for use in diagnostic procedures.