

Anti-Zebrafish GATA6 Antibody

Catalog Number: AZQ6NW63

About GATA6

Enables DNA binding activity. Acts upstream of or within several processes, including cardioblast migration to the midline involved in heart field formation; liver development; and positive regulation of transcription by RNA polymerase II. Predicted to be active in nucleus. Is expressed in several structures, including blastoderm; cardiovascular system; digestive system; mesoderm; and yolk syncytial layer. Human ortholog(s) of this gene implicated in adenocarcinoma (multiple); congenital heart disease (multiple); and pancreatic hypoplasia-diabetes-congenital heart disease syndrome. Orthologous to human GATA6 (GATA binding protein 6).

Overview

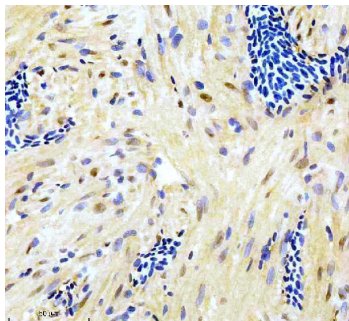
Product Name	Anti-Zebrafish GATA6 Antibody
Reactive Species	Zebrafish
Description	Adding 0.2 ml of distilled water will yield a concentration of 500 ug/ml. Adding 0.2 ml of distilled water will yield a concentration of 500 ug/ml. Immunogen affinity purified. Enables DNA binding activity. Acts upstream of or within several processes, including cardioblast migration to the midline involved in heart field formation; liver development; and positive regulation of transcription by RNA polymerase II. Predicted to be active in nucleus. Is expressed in several structures, including blastoderm; cardiovascular system; digestive system; mesoderm; and yolk syncytial layer. Human ortholog(s) of this gene implicated in adenocarcinoma (multiple); congenital heart disease (multiple); and pancreatic hypoplasia-diabetes-congenital heart disease syndrome. Orthologous to human GATA6 (GATA binding protein 6). E.coli-derived Zebrafish GATA6 recombinant protein (Position: E26-E296) anti-zebrafish-gata6-antibody-azq6nw63-boster Anti-Zebrafish GATA6 Antibody Boster Bio Anti-Zebrafish GATA6 Antibody catalog # AZQ6NW63. Tested in IHC applications. This antibody reacts with Zebrafish.
Application	IHC
Clonality	Polyclonal
Formulation	Each vial contains 4 mg Trehalose, 0.9 mg NaCl, 0.2 mg Na2HPO4.
Storage Instructions	At -20°C for one year from date of receipt. After reconstitution, at 4°C for one month. It can also be aliquotted and stored frozen at -20°C for six months. Avoid repeated freezing and thawing.
Host	Rabbit
Uniprot ID	Q6NW63

Technical Details

Immunogen	E.coli-derived Zebrafish GATA6 recombinant protein (Position: E26-E296)
Form	Lyophilized
Concentration	Adding 0.2 ml of distilled water will yield a concentration of 500 ug/ml.

Purification	Immunogen affinity purified.
Suggested Dilutions	Immunohistochemistry(Paraffin-embedded Section), 2-5 ug/ml, Zebrafish

Anti-Zebrafish GATA6 Antibody (AZQ6NW63) Images



IHC analysis of GATA6 using anti-GATA6 antibody (AZQ6NW63). GATA6 was detected in a paraffin-embedded section of zebrafish heart tissue. Heat mediated antigen retrieval was performed in EDTA buffer (pH 8.0, epitope retrieval solution). The tissue section was blocked with 10% goat serum. The tissue section was then incubated with 2 ug/ml rabbit anti-GATA6 Antibody (AZQ6NW63) overnight at 4°C. Peroxidase Conjugated Goat Anti-rabbit IgG was used as secondary antibody and incubated for 30 minutes at 37°C. The tissue section was developed using HRP Conjugated Rabbit IgG Super Vision Assay Kit (Catalog # SV0002) with DAB as the chromogen.

Submit a product review to Biocompare.com

Submit a review of this product to Biocompare.com to receive a \$20 Amazon.com giftcard! Your reviews help your fellow scientists make the right decisions. Thank you for your contribution.



Anti-Zebrafish GATA6 Antibody

For Research Use Only. Not for use in diagnostic procedures.