

Anti-Zebrafish Alpha Tubulin/TUBA1A Antibody Picoband®

Catalog Number: AZQ6NWK7

About TUBA1A

Predicted to enable GTP binding activity. Predicted to be a structural constituent of cytoskeleton. Acts upstream of or within negative regulation of apoptotic process and optic nerve formation. Predicted to be located in cytoskeleton. Predicted to be active in cytoplasm and microtubule. Human ortholog(s) of this gene implicated in lissencephaly; lissencephaly 3; and microcephaly. Orthologous to several human genes including TUBA1A (tubulin alpha 1a).

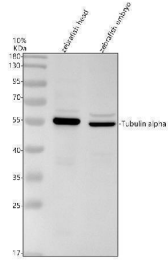
Overview

Product Name	Anti-Zebrafish Alpha Tubulin/TUBA1A Antibody Picoband®
Reactive Species	Zebrafish
Description	Boster Bio Anti-Zebrafish Alpha Tubulin/TUBA1A Antibody Picoband® catalog # AZQ6NWK7. Tested in WB, IHC, IF applications. This antibody reacts with Zebrafish. The brand Picoband indicates this is a premium antibody that guarantees superior quality, high affinity, and strong signals with minimal background in Western blot applications. Only our best-performing antibodies are designated as Picoband, ensuring unmatched performance.
Application	IF, IHC, WB
Clonality	Polyclonal
Formulation	Each vial contains 4 mg Trehalose, 0.9 mg NaCl, 0.2 mg Na ₂ HPO ₄ .
Storage Instructions	At -20°C for one year from date of receipt. After reconstitution, at 4°C for one month. It can also be aliquotted and stored frozen at -20°C for six months. Avoid repeated freezing and thawing.
Host	Rabbit
Uniprot ID	Q6NWK7

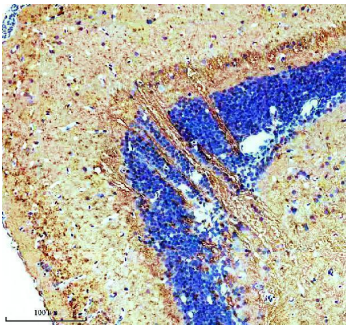
Technical Details

Immunogen	E.coli-derived Zebrafish Alpha Tubulin/TUBA1A recombinant protein (Position: M1-G436).
Form	Lyophilized
Concentration	Adding 0.2 ml of distilled water will yield a concentration of 500 ug/ml.
Purification	Immunogen affinity purified.
Suggested Dilutions	Western blot, 0.25-0.5 ug/ml, Zebrafish Immunohistochemistry(Paraffin-embedded Section), 2-5 ug/ml, Zebrafish Immunofluorescence, 2 ug/ml, Zebrafish

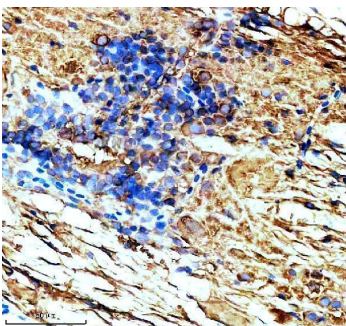
Anti-Zebrafish Alpha Tubulin/TUBA1A Antibody Picoband® (AZQ6NWK7) Images



Western blot analysis of Alpha Tubulin/TUBA1A using anti-Alpha Tubulin/TUBA1A antibody (AZQ6NWK7). Electrophoresis was performed on a 10% SDS-PAGE gel at 80V (Stacking gel) / 120V (Resolving gel) for 2 hours. The sample well of each lane was loaded with 30 ug of sample under reducing conditions. Lane 1: zebrafish head tissue lysates, Lane 2: zebrafish embryo tissue lysates. After electrophoresis, proteins were transferred to a nitrocellulose membrane at 150 mA for 50-90 minutes. Blocked the membrane with 5% non-fat milk/TBS for 1.5 hour at RT. The membrane was incubated with rabbit anti-Alpha Tubulin/TUBA1A antigen affinity purified polyclonal antibody (AZQ6NWK7) at 0.5 ug/mL overnight at 4°C, then washed with TBS-0.1% Tween 3 times with 5 minutes each and probed with a goat anti-rabbit IgG-HRP secondary antibody at a dilution of 1:5000 for 1.5 hour at RT. The signal is developed using an ECL Plus Western Blotting Substrate (Catalog # AR1196-200) with Tanon 5200 system. A specific band was detected for Alpha Tubulin/TUBA1A at approximately 50 kDa. The expected band size for Alpha Tubulin/TUBA1A is at 50 kDa.

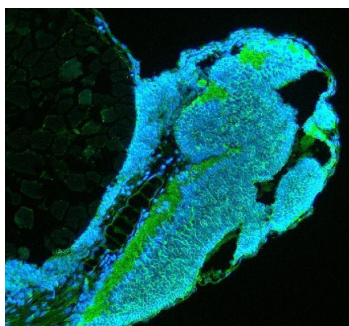


IHC analysis of Alpha Tubulin/TUBA1A using anti-Alpha Tubulin/TUBA1A antibody (AZQ6NWK7). Alpha Tubulin/TUBA1A was detected in a paraffin-embedded section of zebrafish brain tissue. Heat mediated antigen retrieval was performed in EDTA buffer (pH 8.0, epitope retrieval solution). The tissue section was blocked with 10% goat serum. The tissue section was then incubated with 2 ug/ml rabbit anti-Alpha Tubulin/TUBA1A Antibody (AZQ6NWK7) overnight at 4°C. Peroxidase Conjugated Goat Anti-rabbit IgG was used as secondary antibody and incubated for 30 minutes at 37°C. The tissue section was developed using HRP Conjugated Rabbit IgG Super Vision Assay Kit (Catalog # SV0002) with DAB as the chromogen.



IHC analysis of Alpha Tubulin/TUBA1A using anti-Alpha Tubulin/TUBA1A antibody (AZQ6NWK7). Alpha Tubulin/TUBA1A was detected in a paraffin-embedded section of zebrafish spinal cord tissue. Heat mediated antigen retrieval was performed in EDTA buffer (pH 8.0, epitope retrieval solution). The tissue section was blocked with 10% goat serum. The tissue section was then incubated with 2 ug/ml rabbit anti-Alpha Tubulin/TUBA1A Antibody (AZQ6NWK7) overnight at 4°C. Peroxidase Conjugated Goat Anti-rabbit IgG was used as secondary antibody and incubated for 30 minutes at 37°C. The tissue section was developed using HRP Conjugated Rabbit IgG Super Vision Assay Kit (Catalog # SV0002) with DAB as the chromogen.

IF analysis of Alpha Tubulin/TUBA1A using anti-Alpha Tubulin/TUBA1A antibody (AZQ6NWK7). Alpha



Tubulin/TUBA1A was detected in a paraffin-embedded section of zebrafish embryo tissue. Heat mediated antigen retrieval was performed in EDTA buffer (pH 8.0, epitope retrieval solution). The tissue section was blocked with 10% goat serum. The tissue section was then incubated with 5 ug/mL rabbit anti-Alpha Tubulin/TUBA1A Antibody (AZQ6NWK7) overnight at 4°C. DyLight®488 Conjugated Goat Anti-Rabbit IgG (BA1127) was used as secondary antibody at 1:500 dilution and incubated for 30 minutes at 37°C. The section was counterstained with DAPI. Visualize using a fluorescence microscope and filter sets appropriate for the label used.

Submit a product review to Biocompare.com

Submit a review of this product to Biocompare.com to receive a \$20 Amazon.com giftcard! Your reviews help your fellow scientists make the right decisions. Thank you for your contribution.



Anti-Zebrafish Alpha Tubulin/TUBA1A Antibody

For Research Use Only. Not for use in diagnostic procedures.