

## Anti-Zebrafish LPLA Antibody Picoband®

Catalog Number: AZQ6P2U2

### About LPLA

Predicted to enable apolipoprotein binding activity; lipoprotein lipase activity; and phospholipase A1 activity. Acts upstream of or within definitive hemopoiesis and response to (R)-carnitine. Predicted to be located in extracellular region and plasma membrane. Predicted to be active in extracellular space. Is expressed in several structures, including digestive system; head; immature eye; midbrain; and ovary. Human ortholog(s) of this gene implicated in Alzheimer's disease; artery disease (multiple); familial hyperlipidemia (multiple); muscular disease; and type 2 diabetes mellitus. Orthologous to human LPL (lipoprotein lipase).

### Overview

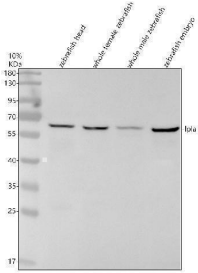
Product Name	Anti-Zebrafish LPLA Antibody Picoband®
Reactive Species	Zebrafish
Description	Boster Bio Anti-Zebrafish LPLA Antibody Picoband® catalog # AZQ6P2U2. Tested in WB applications. This antibody reacts with Zebrafish. The brand Picoband indicates this is a premium antibody that guarantees superior quality, high affinity, and strong signals with minimal background in Western blot applications. Only our best-performing antibodies are designated as Picoband, ensuring unmatched performance.
Application	WB
Clonality	Polyclonal
Formulation	Each vial contains 4 mg Trehalose, 0.9 mg NaCl, 0.2 mg Na <sub>2</sub> HPO <sub>4</sub> .
Storage Instructions	At -20°C for one year from date of receipt. After reconstitution, at 4°C for one month. It can also be aliquotted and stored frozen at -20°C for six months. Avoid repeated freezing and thawing.
Host	Rabbit
Uniprot ID	Q6P2U2

### Technical Details

Immunogen	E.coli-derived Zebrafish LPLA recombinant protein (Position: D52-E511).
Form	Lyophilized
Concentration	Adding 0.2 ml of distilled water will yield a concentration of 500 ug/ml.
Purification	Immunogen affinity purified.
Suggested Dilutions	Western blot, 0.25-0.5 ug/ml, Zebrafish



## Anti-Zebrafish LPLA Antibody Picoband® (AZQ6P2U2) Images



Western blot analysis of LPLA using anti-LPLA antibody (AZQ6P2U2). Electrophoresis was performed on a 10% SDS-PAGE gel at 80V (Stacking gel) / 120V (Resolving gel) for 2 hours. The sample well of each lane was loaded with 30 ug of sample under reducing conditions. Lane 1: zebrafish head tissue lysates, Lane 2: whole female zebrafish tissue lysates, Lane 3: whole male zebrafish tissue lysates, Lane 4: zebrafish embryo tissue lysates. After electrophoresis, proteins were transferred to a nitrocellulose membrane at 150 mA for 50-90 minutes. Blocked the membrane with 5% non-fat milk/TBS for 1.5 hour at RT. The membrane was incubated with rabbit anti-LPLA antigen affinity purified polyclonal antibody (AZQ6P2U2) at 0.5 ug/mL overnight at 4°C, then washed with TBS-0.1%Tween 3 times with 5 minutes each and probed with a goat anti-rabbit IgG-HRP secondary antibody at a dilution of 1:5000 for 1.5 hour at RT. The signal is developed using an ECL Plus Western Blotting Substrate (Catalog # AR1196-200) with Tanon 5200 system. A specific band was detected for LPLA at approximately 60 kDa. The expected band size for LPLA is at 58 kDa.

### Submit a product review to Biocompare.com

Submit a review of this product to Biocompare.com to receive a \$20 Amazon.com giftcard! Your reviews help your fellow scientists make the right decisions. Thank you for your contribution.



Anti-Zebrafish LPLA Antibody

For Research Use Only. Not for use in diagnostic procedures.