

Anti-Zebrafish CCT2 Antibody Picoband®

Catalog Number: AZQ6PBW6

About CCT2

T-complex protein 1 subunit beta (TCP1 beta) is a protein that in humans is encoded by the CCT2 gene. The protein encoded by this gene is a molecular chaperone that is a member of the chaperonin containing TCP1 complex (CCT), also known as the TCP1 ring complex (TRiC). This complex consists of two identical stacked rings, each containing eight different proteins. Unfolded polypeptides enter the central cavity of the complex and are folded in an ATP-dependent manner. The complex folds various proteins, including actin and tubulin. Two transcript variants encoding different isoforms have been found for this gene.

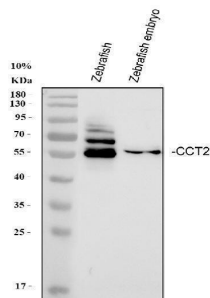
Overview

Product Name	Anti-Zebrafish CCT2 Antibody Picoband®
Reactive Species	Zebrafish
Application	WB
Clonality	Polyclonal
Formulation	Each vial contains 4 mg Trehalose, 0.9 mg NaCl, 0.2 mg Na ₂ HPO ₄ .
Storage Instructions	At -20 °C for one year from date of receipt. After reconstitution, at 4 °C for one month. It can also be aliquotted and stored frozen at -20 °C for six months. Avoid repeated freezing and thawing.
Host	Rabbit
Uniprot ID	Q6PBW6

Technical Details

Immunogen	E.coli-derived zebrafish CCT2 recombinant protein (Position: E437-C535).
Recommended Detection Systems	Boster recommends Enhanced Chemiluminescent Kit with anti-Rabbit IgG (EK1002) for Western blot.
Form	Lyophilized
Concentration	Adding 0.2 ml of distilled water will yield a concentration of 500 ug/ml.
Purification	Immunogen affinity purified.
Suggested Dilutions	Western blot, 0.25-0.5 ug/ml, Zebrafish

Anti-Zebrafish CCT2 Antibody Picoband® (AZQ6PBW6) Images



Western blot analysis of Zebrafish CCT2 using anti-Zebrafish CCT2 antibody (AZQ6PBW6). Electrophoresis was performed on a 10% SDS-PAGE gel at 70V (Stacking gel) / 90V (Resolving gel) for 2-3 hours. The sample well of each lane was loaded with 30 ug of sample under reducing conditions. Lane 1: Zebrafish tissue lysates, Lane 2: Zebrafish embryo tissue lysates. After electrophoresis, proteins were transferred to a nitrocellulose membrane at 150 mA for 50-90 minutes. Blocked the membrane with 5% non-fat milk/TBS for 1.5 hour at RT. The membrane was incubated with rabbit anti-Zebrafish CCT2 antigen affinity purified polyclonal antibody (AZQ6PBW6) at 0.5 ug/mL overnight at 4°C, then washed with TBS-0.1%Tween 3 times with 5 minutes each and probed with a goat anti-rabbit IgG-HRP secondary antibody at a dilution of 1:5000 for 1.5 hour at RT. The signal is developed using an Enhanced Chemiluminescent detection (ECL) kit (Catalog # EK1002) with Tanon 5200 system. A specific band was detected for Zebrafish CCT2 at approximately 58 kDa. The expected band size for Zebrafish CCT2 is at 58 kDa.

Submit a product review to Biocompare.com

Submit a review of this product to Biocompare.com to receive a \$20 Amazon.com giftcard! Your reviews help your fellow scientists make the right decisions. Thank you for your contribution.



Anti-Zebrafish CCT2 Antibody

For Research Use Only. Not for use in diagnostic procedures.