

## Anti-Zebrafish LHB Antibody

Catalog Number: AZQ6TCF5

### About LHB

Enables hormone activity. Acts upstream of or within several processes, including female gonad development; oocyte maturation; and ovulation. Predicted to be located in extracellular region. Predicted to be active in cytoplasm and extracellular space. Is expressed in several structures, including endocrine system; female organism; kidney; liver; and male organism. Human ortholog(s) of this gene implicated in hypogonadotropic hypogonadism 23 with or without anosmia. Orthologous to several human genes including LHB (luteinizing hormone subunit beta).

### Overview

Product Name	Anti-Zebrafish LHB Antibody
Reactive Species	Zebrafish
Description	Adding 0.2 ml of distilled water will yield a concentration of 500 ug/ml. Adding 0.2 ml of distilled water will yield a concentration of 500 ug/ml. Immunogen affinity purified. Enables hormone activity. Acts upstream of or within several processes, including female gonad development; oocyte maturation; and ovulation. Predicted to be located in extracellular region. Predicted to be active in cytoplasm and extracellular space. Is expressed in several structures, including endocrine system; female organism; kidney; liver; and male organism. Human ortholog(s) of this gene implicated in hypogonadotropic hypogonadism 23 with or without anosmia. Orthologous to several human genes including LHB (luteinizing hormone subunit beta). E.coli-derived Zebrafish LHB recombinant protein (Position: L24-Y140) anti-zebrafish-lhb-antibody-azq6tcf5-boster Anti-Zebrafish LHB Antibody Boster Bio Anti-Zebrafish LHB Antibody catalog # AZQ6TCF5. Tested in IHC applications. This antibody reacts with Zebrafish.
Application	IHC
Clonality	Polyclonal
Formulation	Each vial contains 4 mg Trehalose, 0.9 mg NaCl, 0.2 mg Na <sub>2</sub> HPO <sub>4</sub> .
Storage Instructions	At -20°C for one year from date of receipt. After reconstitution, at 4°C for one month. It can also be aliquotted and stored frozen at -20°C for six months. Avoid repeated freezing and thawing.
Host	Rabbit
Uniprot ID	Q6TCF5

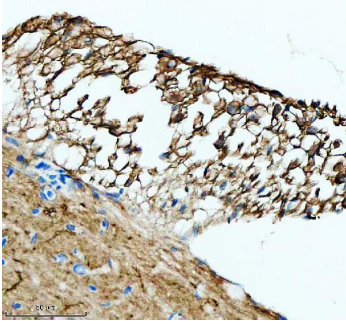
### Technical Details

Immunogen	E.coli-derived Zebrafish LHB recombinant protein (Position: L24-Y140)
Form	Lyophilized
Concentration	Adding 0.2 ml of distilled water will yield a concentration of 500 ug/ml.
Purification	Immunogen affinity purified.

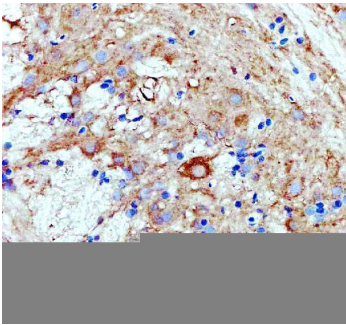
Suggested Dilutions

Immunohistochemistry(Paraffin-embedded Section), 2-5 ug/ml, Zebrafish

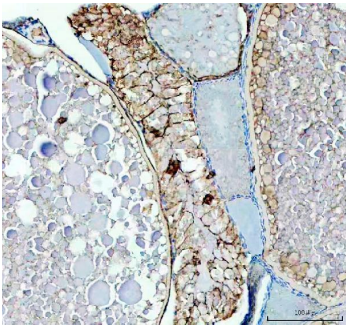
## Anti-Zebrafish LHB Antibody (AZQ6TCF5) Images



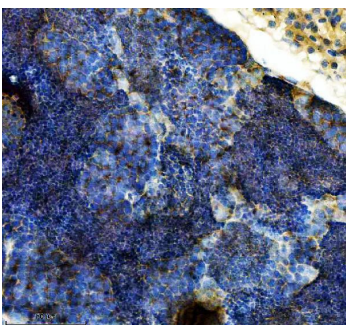
IHC analysis of LHB using anti-LHB antibody (AZQ6TCF5). LHB was detected in a paraffin-embedded section of zebrafish hypophysis tissue. Heat mediated antigen retrieval was performed in EDTA buffer (pH 8.0, epitope retrieval solution). The tissue section was blocked with 10% goat serum. The tissue section was then incubated with 2 ug/ml rabbit anti-LHB Antibody (AZQ6TCF5) overnight at 4°C. Peroxidase Conjugated Goat Anti-rabbit IgG was used as secondary antibody and incubated for 30 minutes at 37°C. The tissue section was developed using HRP Conjugated Rabbit IgG Super Vision Assay Kit (Catalog # SV0002) with DAB as the chromogen.



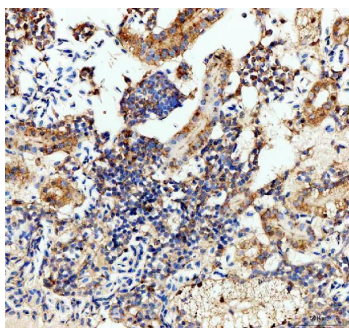
IHC analysis of LHB using anti-LHB antibody (AZQ6TCF5). LHB was detected in a paraffin-embedded section of zebrafish hypothalamus tissue. Heat mediated antigen retrieval was performed in EDTA buffer (pH 8.0, epitope retrieval solution). The tissue section was blocked with 10% goat serum. The tissue section was then incubated with 2 ug/ml rabbit anti-LHB Antibody (AZQ6TCF5) overnight at 4°C. Peroxidase Conjugated Goat Anti-rabbit IgG was used as secondary antibody and incubated for 30 minutes at 37°C. The tissue section was developed using HRP Conjugated Rabbit IgG Super Vision Assay Kit (Catalog # SV0002) with DAB as the chromogen.



IHC analysis of LHB using anti-LHB antibody (AZQ6TCF5). LHB was detected in a paraffin-embedded section of zebrafish ovary tissue. Heat mediated antigen retrieval was performed in EDTA buffer (pH 8.0, epitope retrieval solution). The tissue section was blocked with 10% goat serum. The tissue section was then incubated with 2 ug/ml rabbit anti-LHB Antibody (AZQ6TCF5) overnight at 4°C. Peroxidase Conjugated Goat Anti-rabbit IgG was used as secondary antibody and incubated for 30 minutes at 37°C. The tissue section was developed using HRP Conjugated Rabbit IgG Super Vision Assay Kit (Catalog # SV0002) with DAB as the chromogen.



IHC analysis of LHB using anti-LHB antibody (AZQ6TCF5). LHB was detected in a paraffin-embedded section of zebrafish testis tissue. Heat mediated antigen retrieval was performed in EDTA buffer (pH 8.0, epitope retrieval solution). The tissue section was blocked with 10% goat serum. The tissue section was then incubated with 2 ug/ml rabbit anti-LHB Antibody (AZQ6TCF5) overnight at 4°C. Peroxidase Conjugated Goat Anti-rabbit IgG was used as secondary antibody and incubated for 30 minutes at 37°C. The tissue section was developed using HRP Conjugated Rabbit IgG Super Vision Assay Kit (Catalog # SV0002) with DAB as the chromogen.



IHC analysis of LHB using anti-LHB antibody (AZQ6TCF5). LHB was detected in a paraffin-embedded section of zebrafish kidney tissue. Heat mediated antigen retrieval was performed in EDTA buffer (pH 8.0, epitope retrieval solution). The tissue section was blocked with 10% goat serum. The tissue section was then incubated with 2 ug/ml rabbit anti-LHB Antibody (AZQ6TCF5) overnight at 4°C. Peroxidase Conjugated Goat Anti-rabbit IgG was used as secondary antibody and incubated for 30 minutes at 37°C. The tissue section was developed using HRP Conjugated Rabbit IgG Super Vision Assay Kit (Catalog # SV0002) with DAB as the chromogen.

## Submit a product review to Biocompare.com

Submit a review of this product to Biocompare.com to receive a \$20 Amazon.com giftcard! Your reviews help your fellow scientists make the right decisions. Thank you for your contribution.



Anti-Zebrafish LHB Antibody

For Research Use Only. Not for use in diagnostic procedures.