

## Anti-Zebrafish ABCE1 Antibody Picoband®

Catalog Number: AZQ6TNW3

### About ABCE1

ATP binding cassette E1 (ABCE1, also RNase L inhibitor) is an ATPase found in humans involved in viral assembly. It is a member of the ATP-binding cassette (ABC) transporters superfamily and OABP subfamily. ABCE1 inhibits the action of ribonuclease L. Ribonuclease L normally binds to 2-5A (5'-phosphorylated 2',5'-linked oligoadenylates) and inhibits the interferon-regulated 2-5A/RNase L pathway, which is used by viruses. ABCE1 heterodimerize with ribonuclease L and prevents its interaction with 2-5A, antagonizing the anti-viral properties of ribonuclease L, and allow the virus to synthesize viral proteins. It has also been implicated to have an effect in tumor cell proliferation and antiapoptosis.

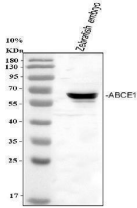
### Overview

Product Name	Anti-Zebrafish ABCE1 Antibody Picoband®
Reactive Species	Zebrafish
Application	IHC, WB
Clonality	Polyclonal
Formulation	Each vial contains 4 mg Trehalose, 0.9 mg NaCl, 0.2 mg Na <sub>2</sub> HPO <sub>4</sub> .
Storage Instructions	At -20°C for one year from date of receipt. After reconstitution, at 4 °C for one month. It can also be aliquotted and stored frozen at -20 °C for six months. Avoid repeated freezing and thawing.
Host	Rabbit
Uniprot ID	Q6TNW3

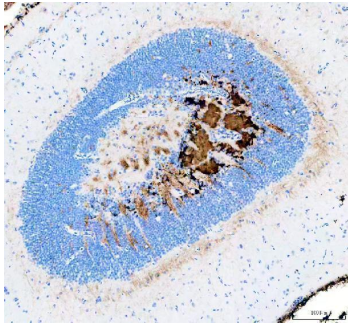
### Technical Details

Immunogen	E.coli-derived zebrafish ABCE1 recombinant protein (Position: Q141-D599).
Recommended Detection Systems	Boster recommends Enhanced Chemiluminescent Kit with anti-Rabbit IgG (EK1002) for Western blot, and HRP Conjugated anti-Rabbit IgG Super Vision Assay Kit (SV0002-1) for IHC(P).
Form	Lyophilized
Concentration	Adding 0.2 ml of distilled water will yield a concentration of 500 ug/ml.
Purification	Immunogen affinity purified.
Suggested Dilutions	Western blot, 0.25-0.5 ug/ml, Zebrafish Immunohistochemistry(Paraffin-embedded Section), 2-5 ug/ml, Zebrafish

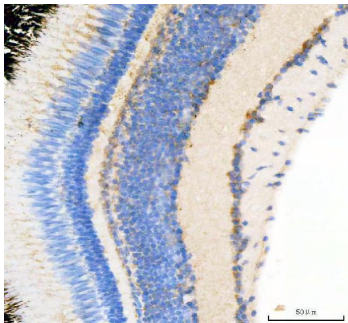
## Anti-Zebrafish ABCE1 Antibody Picoband® (AZQ6TNW3) Images



Western blot analysis of Zebrafish ABCE1 using anti-Zebrafish ABCE1 antibody (AZQ6TNW3). Electrophoresis was performed on a 10% SDS-PAGE gel at 70V (Stacking gel) / 90V (Resolving gel) for 2-3 hours. The sample well of each lane was loaded with 30 ug of sample under reducing conditions. Lane 1: Zebrafish embryo tissue lysates. After electrophoresis, proteins were transferred to a nitrocellulose membrane at 150 mA for 50-90 minutes. Blocked the membrane with 5% non-fat milk/TBS for 1.5 hour at RT. The membrane was incubated with rabbit anti-Zebrafish ABCE1 antigen affinity purified polyclonal antibody (AZQ6TNW3) at 0.5 ug/mL overnight at 4°C, then washed with TBS-0.1%Tween 3 times with 5 minutes each and probed with a goat anti-rabbit IgG-HRP secondary antibody at a dilution of 1:5000 for 1.5 hour at RT. The signal is developed using an Enhanced Chemiluminescent detection (ECL) kit (Catalog # EK1002) with Tanon 5200 system. A specific band was detected for Zebrafish ABCE1 at approximately 67 kDa. The expected band size for Zebrafish ABCE1 is at 67 kDa.



IHC analysis of Zebrafish ABCE1 using anti-Zebrafish ABCE1 antibody (AZQ6TNW3). Zebrafish ABCE1 was detected in paraffin-embedded section of zebrafish brain tissue. Heat mediated antigen retrieval was performed in EDTA buffer (pH8.0, epitope retrieval solution). The tissue section was blocked with 10% goat serum. The tissue section was then incubated with 2ug/ml rabbit anti-Zebrafish ABCE1 Antibody (AZQ6TNW3) overnight at 4°C. Peroxidase Conjugated Goat Anti-rabbit IgG was used as secondary antibody and incubated for 30 minutes at 37°C. The tissue section was developed using HRP Conjugated Rabbit IgG Super Vision Assay Kit (Catalog # SV0002) with DAB as the chromogen.



IHC analysis of Zebrafish ABCE1 using anti-Zebrafish ABCE1 antibody (AZQ6TNW3). Zebrafish ABCE1 was detected in paraffin-embedded section of zebrafish eye tissue. Heat mediated antigen retrieval was performed in EDTA buffer (pH8.0, epitope retrieval solution). The tissue section was blocked with 10% goat serum. The tissue section was then incubated with 2ug/ml rabbit anti-Zebrafish ABCE1 Antibody (AZQ6TNW3) overnight at 4°C. Peroxidase Conjugated Goat Anti-rabbit IgG was used as secondary antibody and incubated for 30 minutes at 37°C. The tissue section was developed using HRP Conjugated Rabbit IgG Super Vision Assay Kit (Catalog # SV0002) with DAB as the chromogen.

Submit a product review to [Biocompare.com](https://www.biocompare.com)

Submit a review of this product to [Biocompare.com](https://www.biocompare.com) to receive a \$20 Amazon.com giftcard! Your reviews help your fellow scientists make the right decisions. Thank you for your contribution.



Anti-Zebrafish ABCE1 Antibody

For Research Use Only. Not for use in diagnostic procedures.