

## Anti-Zebrafish Bcl-XL/BCL2L1 Antibody

Catalog Number: AZQ90Z98

### About BCL2L1

Enables cysteine-type endopeptidase inhibitor activity involved in apoptotic process. Acts upstream of or within negative regulation of intrinsic apoptotic signaling pathway; thyroid gland development; and tissue homeostasis. Predicted to be located in membrane. Predicted to be active in mitochondrial outer membrane. Is expressed in several structures, including blood island; endocrine system; extension; immune system; and nervous system. Human ortholog(s) of this gene implicated in breast cancer; carcinoma (multiple); leukemia (multiple); and pancreatic cancer. Orthologous to human BCL2L1 (BCL2 like 1).

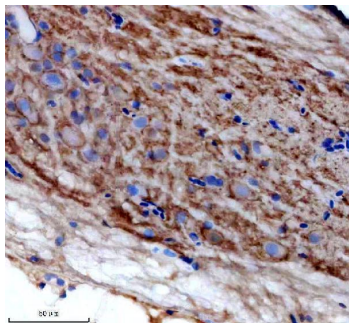
### Overview

Product Name	Anti-Zebrafish Bcl-XL/BCL2L1 Antibody
Reactive Species	Zebrafish
Description	Boster Bio Anti-Zebrafish Bcl-XL/BCL2L1 Antibody catalog # AZQ90Z98. Tested in IHC applications. This antibody reacts with Zebrafish.
Application	IHC
Clonality	Polyclonal
Formulation	Each vial contains 4 mg Trehalose, 0.9 mg NaCl, 0.2 mg Na <sub>2</sub> HPO <sub>4</sub> .
Storage Instructions	At -20°C for one year from date of receipt. After reconstitution, at 4°C for one month. It can also be aliquotted and stored frozen at -20°C for six months. Avoid repeated freezing and thawing.
Host	Rabbit
Uniprot ID	Q90Z98

### Technical Details

Immunogen	E.coli-derived Zebrafish Bcl-XL/BCL2L1 recombinant protein (Position: Q19-K215).
Form	Lyophilized
Concentration	Adding 0.2 ml of distilled water will yield a concentration of 500 ug/ml.
Purification	Immunogen affinity purified.
Suggested Dilutions	Immunohistochemistry(Paraffin-embedded Section), 2-5 ug/ml, Zebrafish

## Anti-Zebrafish Bcl-XL/BCL2L1 Antibody (AZQ90Z98) Images



IHC analysis of BCL2L1 using anti-BCL2L1 antibody (AZQ90Z98). BCL2L1 was detected in a paraffin-embedded section of zebrafish spinal cord tissue. Heat mediated antigen retrieval was performed in EDTA buffer (pH 8.0, epitope retrieval solution). The tissue section was blocked with 10% goat serum. The tissue section was then incubated with 2 ug/ml rabbit anti-BCL2L1 Antibody (AZQ90Z98) overnight at 4°C. Peroxidase Conjugated Goat Anti-rabbit IgG was used as secondary antibody and incubated for 30 minutes at 37°C. The tissue section was developed using HRP Conjugated Rabbit IgG Super Vision Assay Kit (Catalog # SV0002) with DAB as the chromogen.

### Submit a product review to Biocompare.com

Submit a review of this product to Biocompare.com to receive a \$20 Amazon.com giftcard! Your reviews help your fellow scientists make the right decisions. Thank you for your contribution.



Anti-Zebrafish Bcl-XL/BCL2L1 Antibody

For Research Use Only. Not for use in diagnostic procedures.