

## Anti-Zebrafish M-CSFR/CSF1R Antibody

Catalog Number: AZQ9I8N6

### About CSF1R

CSF1R(Colony-Stimulating Factor 1 Receptor) also known as MCSFR, FMS, c-FMS, CD115, ONCOGENE FMS or CD115 ANTIGEN, encodes a tyrosine kinase growth factor receptor for colony-stimulating factor-1, the macrophage-and monocyte-specific growth factor. The gene is located on long arm of chromosome 5(5q32) on the Crick(minus) strand. The as-yet-unidentified<sup>o</sup>CSF1 Rpromoter/enhancer sequences may be confined to the nucleotides separating the 2 genes or could potentially lie within the PDGFR gene itself. The encoded protein is a single pass type I membrane protein and acts as the receptor for<sup>o</sup>Colony stimulating factor 1, a cytokine which controls the production, differentiation, and function of macrophages. The encoded protein is atyrosine kinase transmembrane receptor and member of the CSF1/PDGF receptor family of tyrosine-protein kinases. Kondo et al.(2000) showed that the endogenous myelomonocytic cytokine receptors for GM-CSF and macrophage colony-stimulating factor(CSF1R) are expressed at low to moderate levels on the more primitive hematopoietic stem cells, are absent on common lymphoid progenitors, and are upregulated after myeloid lineage induction by IL2.

### Overview

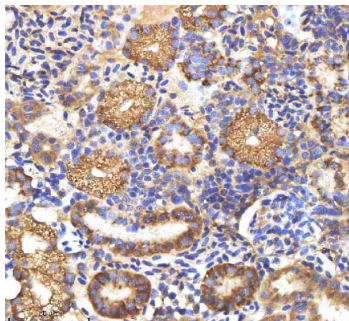
Product Name	Anti-Zebrafish M-CSFR/CSF1R Antibody
Reactive Species	Zebrafish
Description	Boster Bio Anti-Zebrafish M-CSFR/CSF1R Antibody catalog #AZQ9I8N6. Tested in IHC applications. This antibody reacts with Zebrafish.
Application	IHC
Clonality	Polyclonal
Formulation	Each vial contains 4 mg Trehalose, 0.9 mg NaCl, 0.2 mg Na <sub>2</sub> HPO <sub>4</sub> .
Storage Instructions	At -20°C for one year from date of receipt. After reconstitution, at 4°C for one month. It can also be aliquotted and stored frozen at -20°C for six months. Avoid repeated freezing and thawing.
Host	Rabbit
Uniprot ID	Q9I8N6

### Technical Details

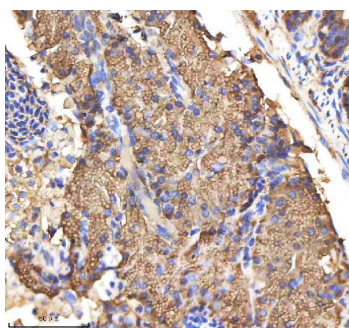
Immunogen	E.coli-derived zebrafish M-CSFR/CSF1R recombinant protein (Position: D409-C977)
Form	Lyophilized
Concentration	Adding 0.2 ml of distilled water will yield a concentration of 500 ug/ml.
Purification	Immunogen affinity purified.
Suggested Dilutions	Immunohistochemistry(Paraffin-embedded Section), 2-5 ug/ml, Zebrafish



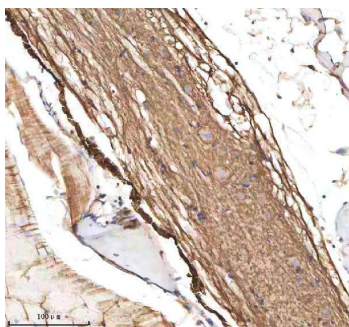
## Anti-Zebrafish M-CSFR/CSF1R Antibody (AZQ9I8N6) Images



IHC analysis of M-CSFR/CSF1R using anti-M-CSFR/CSF1R antibody (AZQ9I8N6). M-CSFR/CSF1R was detected in a paraffin-embedded section of zebrafish kidney tissue. Heat mediated antigen retrieval was performed in EDTA buffer (pH 8.0, epitope retrieval solution). The tissue section was blocked with 10% goat serum. The tissue section was then incubated with 2 ug/ml rabbit anti-M-CSFR/CSF1R Antibody (AZQ9I8N6) overnight at 4°C. Peroxidase Conjugated Goat Anti-rabbit IgG was used as secondary antibody and incubated for 30 minutes at 37°C. The tissue section was developed using HRP Conjugated Rabbit IgG Super Vision Assay Kit (Catalog # SV0002) with DAB as the chromogen.



IHC analysis of M-CSFR/CSF1R using anti-M-CSFR/CSF1R antibody (AZQ9I8N6). M-CSFR/CSF1R was detected in a paraffin-embedded section of zebrafish pancreas tissue. Heat mediated antigen retrieval was performed in EDTA buffer (pH 8.0, epitope retrieval solution). The tissue section was blocked with 10% goat serum. The tissue section was then incubated with 2 ug/ml rabbit anti-M-CSFR/CSF1R Antibody (AZQ9I8N6) overnight at 4°C. Peroxidase Conjugated Goat Anti-rabbit IgG was used as secondary antibody and incubated for 30 minutes at 37°C. The tissue section was developed using HRP Conjugated Rabbit IgG Super Vision Assay Kit (Catalog # SV0002) with DAB as the chromogen.



IHC analysis of M-CSFR/CSF1R using anti-M-CSFR/CSF1R antibody (AZQ9I8N6). M-CSFR/CSF1R was detected in a paraffin-embedded section of zebrafish spinal cord tissue. Heat mediated antigen retrieval was performed in EDTA buffer (pH 8.0, epitope retrieval solution). The tissue section was blocked with 10% goat serum. The tissue section was then incubated with 2 ug/ml rabbit anti-M-CSFR/CSF1R Antibody (AZQ9I8N6) overnight at 4°C. Peroxidase Conjugated Goat Anti-rabbit IgG was used as secondary antibody and incubated for 30 minutes at 37°C. The tissue section was developed using HRP Conjugated Rabbit IgG Super Vision Assay Kit (Catalog # SV0002) with DAB as the chromogen.

### Submit a product review to [Biocompare.com](https://www.biocompare.com)

Submit a review of this product to [Biocompare.com](https://www.biocompare.com) to receive a \$20 Amazon.com giftcard! Your reviews help your fellow scientists make the right decisions. Thank you for your contribution.



Anti-Zebrafish M-CSFR/CSF1R Antibody

For Research Use Only. Not for use in diagnostic procedures.